

Comfortable operation

- ◆ Rops/Fops hexahedron cab, blade vision is better than competing products;
- ◆ The fully-sealed silent cab minimizes dust entry and provides a quiet and comfortable driving environment. Cab noise reduced to 75dB(A);
- ◆ 5.8kW high-power cooling and heating air conditioner, three-dimensional air duct layout. At 38℃, the temperature of driving environment can be reduced to 23℃ in 30 minutes;
- ◆ Grammer shock-absorbing seat with headrest and spacious backrest, with mechanical suspension structure, brings maximum support for long-time driving and reduces fatigue.

Convenient maintenance

- ◆ The working device adopts the slewing support structure, and the whole life cycle is free of adjustment;
- ◆ Oil bath pre-filtration + large capacity air filtration, easy to use and low cost;
- ◆ Intelligent cloud system, real-time monitoring, automatic display of fault information and maintenance content.



C10 Series



SANY HEAVY INDUSTRY CO., LTD.

Sany Industrial City, Changsha Economic and Technological Development Zone, Hunan Province, China
Zip: 410100
Fax: 0086-731-85835199 Enquiry and Complaint Telephone: 0086-4006098318

Warm reminder:
As the technology is constantly updated, technical parameters and configurations are subject to change without prior notice.
The machine on the picture may include additional equipment, this album is for reference only, subject to the actual.
The copyright belongs to SANY Heavy Industry, and no part of this catalog may be reproduced or copied for any purpose without SANY Heavy Industry's written permission.

© China print Apr. 2025 edition



Scan the QR code to follow
the WeChat Official Account of
SANY Road Machinery

V 20250409

SANY[®]

SPECIFICATION



Grader STG265C-10 Euro III

QUALITY CHANGES THE WORLD
www.sanyglobal.com

Product Highlights

Strong power

- ◆ Hunan-Deutz 272hp heavy-duty engine, optimal bridge-to-load ratio, maximum traction 115kN;
- ◆ Manual/automatic operation modes to meet the needs of insufficient scenes;
- ◆ Optimal matching of engine and gearbox to meet the operation scenarios such as dump leveling and mine road maintenance.

Reliable and durable

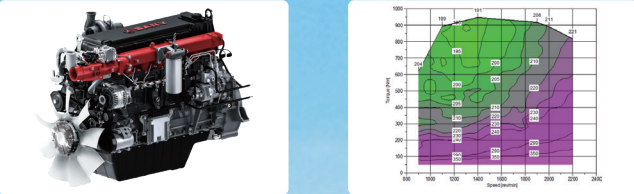
- ◆ Design standard for mining platform, intelligent manufacturing in lighthouse factory, service life of structural parts >30000h;
- ◆ The 3rd generation wet rear axle for heavy-duty mining meets the high attendance and heavy-duty working conditions of mines. Reinforced slewing bearing and chain, NO-SPIN silent differential lock, has a service life increased by 50%;
- ◆ The fully-enclosed rolling disc operating device adapts to sand and gravel, with high slewing accuracy, no need for frequent maintenance, no wearing parts, and a service life >10000h.



STG265C-10GraderC10 Series

Power adaptive intelligent matching technology

- The customized power curve is automatically matched with different working gears to reduce operating fuel consumption.



3rd generation wet rear axle for heavy-duty mining

- Slewing bearing, wheel bearing and lubrication, chain and differential lock are upgraded again to adapt to high attendance and high load conditions in mines;
- The fourth-generation reinforced slewing bearing (patent), with greater bearing capacity, more reliable sealing, and maintenance cycle > 1000h.



Fully-enclosed rolling disc heavy-duty operating device

- The fully-enclosed rolling disc operating device adapts to sand and gravel, with high slewing accuracy. It has a grease filling cycle of 200 ~ 300h, without wearing parts, and its service life is > 10000h.
- Four-link swing frame, long blade extension distance, versatile in operation, 505mm lifting height, excellent trafficability.



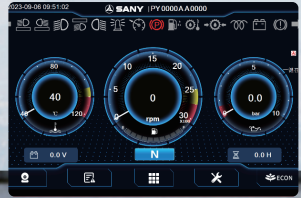
Quiet and comfortable driving

- Rops/Fops hexahedron cab, blade vision is better than competing products.
- 5.8kW high-power cooling and heating air conditioner, three-dimensional air duct layout. At 38℃, the temperature of driving environment can be reduced to 23℃ in 30 minutes.
- Grammer shock-absorbing seat with headrest and spacious backrest, with mechanical suspension structure, brings maximum support for long-time driving and reduces fatigue.
- Luxury interior, left and right push windows, radio, cab fan, USB charging, storage box, etc.



3rd generation intelligent display and control system

- 7-inch touch screen, thin film buttons and integrated reversing camera are available in seven languages: Chinese, Russian, English, French, Spanish, Portuguese and Indonesian.
- Intelligent cloud system, real-time monitoring of complete machine status, intuitive and automatic prompt for fault self-diagnosis and regular maintenance.



Product options and smart kit

Module	Standard	Optional/additional
Engine	SANY DEUTZ D09 Euro III	/
Gearbox	ZF 6BP230	/
Rear axle	Special mine type: wet brake + double-row slewing bearing + reinforced chain	/
Air filter system	Desert type (oil bath)	/
Cab	Ultimate vision hexahedron (including beacon light)	/
Seat	Grammer mechanical suspension type (including seat belt)	/
Swing frame	Four link (including electro-hydraulic bolt)	/
Worm wheel case	Overload protection	/
Blade	14ft(4270mm)	12ft(3660mm) / 13ft(3965mm)
Cutting edge	Mine wear-resistant type	/
Wheel	20.5-25 (lubed)	Desert type (vacuum tire)
Auxiliary system	/	Auto Lubrication System
Operating tools	/	Front dozer plate/ rear ripper
Intelligent blade	/	Buffer floating

Notes:
1. Standard operating mass includes standard configuration of 20.5-25 tires, full load fuel, coolant, lubricant and 75kg operator.
2. Due to the continuous update of technology and products, parameters are subject to modification without notice. In case of any discrepancy between samples and physical objects, the physical object shall prevail.

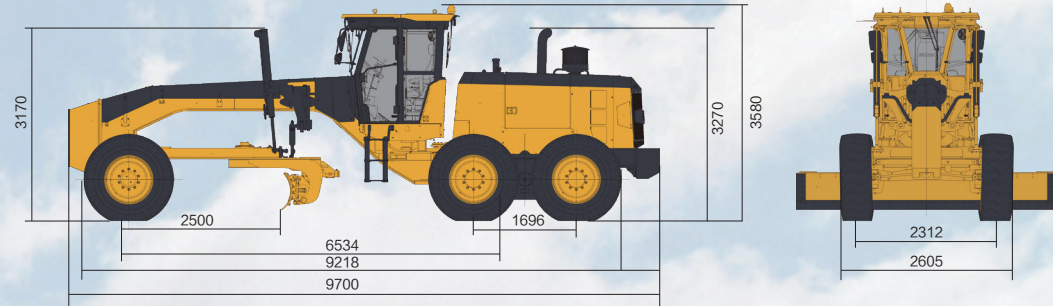
Service environment of product

- Standard configuration: no intake preheating system + normal temperature battery, suitable for an ambient temperature of above -10℃;
- Intake preheating system + normal temperature battery are installed to meet an ambient temperature of above -20℃;
- If the ambient temperature is below -20℃, please consult SANY technicians.

Product Parameters

Overall Dimensions

The following are standard configuration measurements, and the physical items vary depending on the options.



Unit: mm

Item		STG265C-10
Engine model		Hunan-Deutz D09 Euro III
Rated power/speed (kW/rpm)		200/2200
Overall dimensions (mm)	Standard configuration: including front and rear counterweights	9700×2860×3580
	Addition: rear ripper	10800×2860×3580
	Addition: front dozer + rear ripper	11620×2860×3580
Operating mass (kg)	Standard configuration: including front and rear counterweights	19300
	Addition: rear ripper	20200
	Addition: front dozer + rear ripper	21000
Forward speed (km/h)		6/9/14/21/30/42
Reverse speed (km/h)		6/15/34
Blade length × chord height (mm)		4270×610 (standard)
Maximum lifting height of blade (mm)		515
Fuel tank volume (L)		380
Volume of hydraulic tank (L)		140

