



WeChat account of  
Sany Heavy Machinery



Official Douyin account of  
Sany Heavy Machinery

SANY HEAVY MACHINERY CO., LTD.

Address: Sany Industrial Park, Dongcheng Avenue, Economic and Technological Development Zone,  
Kunshan City, Jiangsu Province, Postal Code: 215300

After-sales service hotline: 400-828-2318 Consultation and complaint hotline: 400-887-9318

Website: <http://www.sanygroup.com>

This manual intends to be as comprehensive and detailed as possible on the basis of the existing information. Considering the continuous technological advancements and updates of Sany Heavy Machinery Co., Ltd., the technical parameters, configurations and other information of the product may be modified and adjusted at any time. Therefore, this product manual is for reference only, and the appearance, configuration, technical parameters, etc. of specific models are subject to the actual models sold by the dealer.

Published in October 2023



QUALITY CHANGES THE WORLD



## SKID STEER LOADER SS270V

Rated Power: 61.3 kW (82.2 hp) / 2400 rpm

Operating Weight: 4,250 kg/9,370 lb

Rated Operating Capacity: 1,290 kg/2,850 lb

High Flow: 125 L/min / 33 gpm



Comfort



Safety



Intelligence



Efficiency



Accessibility



Versatility



# SKID STEER LOADER

As a kind of compact earthmoving machinery, the skid steer loader is nimble and able to pivot 360 degrees in place by utilizing the speed difference between the two side wheels. Benefitting from the design of quick couplers, different attachments can be attached in minutes to meet various demands in general construction, agriculture, utility, and landscaping.

SS270V is a new masterpiece of SANY. Based on SANY excavator's mature R&D platform and rigorous testing system, its durability has been tested for more than 3000 hours. And it will have an awesome performance because of its following six highlights.



© Bulk Shovel Loading



© Site Cleaning



© Road Milling



© Material Handling



# SIX HIGHLIGHTS



Comfort



Safety



Intelligence



Efficiency



Accessibility



Versatility







## COMFORT



Ergonomic Joystick

Adjustable Air Outlet

Safety Armrest

Suspension Seat

Adjustable Air Outlet



## SPACIOUS CAB

- ◎ The cab has an interior width of 950 mm, providing ample space and depth for a comfortable experience.

## LOW NOISE

- ◎ Adopting an integrated cab with good sealing.
- ◎ The temperature-control fan with large diameter can dissipate heat independently, making low noise.

## WORK with OPEN FRONT DOOR

- ◎ It's accessible to work with open front door which can be flipped up to the top of the cab through an unique connecting rod mechanism.



## AIR CONDITIONING SYSTEM

- ◎ Integrated cooling and heating, powerful and comfortable.
- ◎ Wind speed and direction, foot blow and defrosting, adjustable as desired.



## TOUCH DISPLAY

- ◎ 7-inch LCD screen, anti-glare.
- ◎ Integrated with the control of equipment including rearview camera, air conditioning, radio, etc.



## ERGONOMIC DESIGNS

- ◎ The safety armrest features a streamlined design and armrest function, providing a comfortable and fatigue-free support.
- ◎ The joystick, buttons, and scroll wheel are arranged according to ergonomics for comfortable operation.



## CONSIDERATE DESIGNS

- ◎ Considerate designs such as 12V power socket, cup holder, storage bag, etc., for convenient use by the operator.





## MULTIPLE PROTECTION

- ◎ It's necessary to lower the safety armrest and unlock the one-click before operating the machine.
- ◎ Equipped with ROPS&FOPS cab, side window protection net, boom safety rod, and rotating warning light to ensure safety.
- ◎ Equipped with emergency unloading valve and escape window, practicing the concept of "life is the most important, and there is no price for life."



SAFETY ARMRESTS: The safety armrests must be lowered before any operation.



PROTECTIVE NET: It prevents personnel injuries caused by splashing or falling stones, etc.



ROTATING WARNING LIGHT: It always reminds people around to maintain a safe distance.



EMERGENCY UNLOADING: Lower the boom in emergency situations to ensure safety.



ESCAPE WINDOW: emergency exit.





SAFETY

## VISIBILITY

- The reversing camera system and interior rearview mirror provide an ideal view behind the machine.
- Panoramic view design for front and sides to minimize unnecessary obstruction.



Front view + rear view + reverse image + rearview mirror

## NIGHT LIGHTING

- The high-brightness LED lights are equipped at the front and rear. The combined tail light integrates lighting, warning and steering functions to ensure construction safety at night.



SS270V SKID STEER LOADER







## SMOOTH SHOVELING

- No spreading happens in shovel transport as for its configuration of ride control system and self-leveling system.

## PRECISE CONTROL

- The response and micro-mobility are great because of the hydraulic pilot control.
- Adopting DA power distribution technology to prevent flameout intelligently.

## INTELLIGENT OPERATION

- One-click startup is available to eliminate the trouble of carrying the key. And a password can be set to ensure the safety of your equipment.
- The maintenance reminders and fault alarms can be seen in the display by the transmission via CAN bus, allowing for real-time monitoring of machine status.

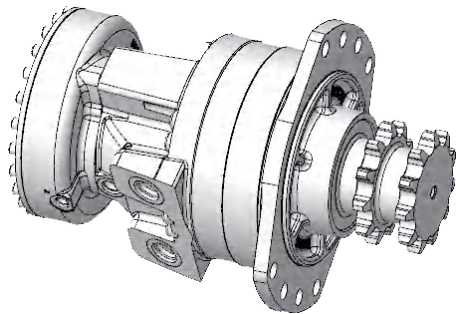
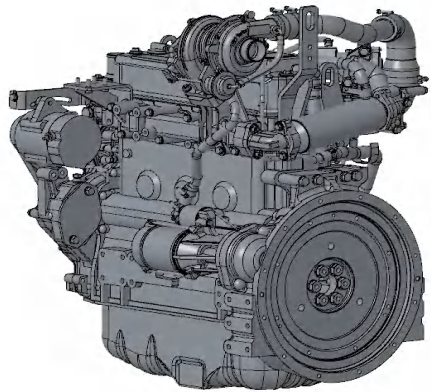






## POWERFUL

- ◎ Both the power and traction are strong benefiting from its powerful YANMAR engine and a low-speed and high-torque motor.
- ◎ Based on its vertical lifting structure, large breakout force was achieved through the combination between the excellent point design and strong thrust cylinder.



## EFFICIENT

- ◎ Configured with dual speeds, with a maximum speed of 20 km/h, achieving efficient transfer.

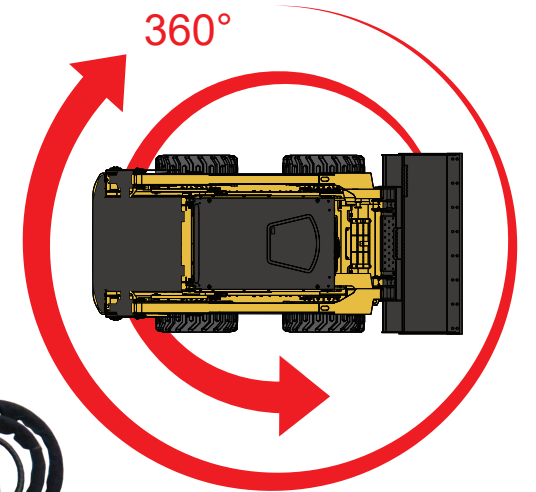


## HIGH UNLOADING HEIGHT

- ◎ The maximum hinge height reaches 3,350 mm, making truck loading easier.

## PIVOT 360 DEGREE IN PLACE

- ◎ It can pivot 360 degree in place benefiting from its compact structure, making it possible to work in confined spaces.







# MULTIFUNCTIONAL

## VERSATILITY

Standard and high flows are available, making that various attachments can be used to meet different assignments, such as buckets, sweepers, snow blowers, cold planers, forks, forest mulchers, etc.

### SPACIOUS AND ACCESSIBLE

- The tailgate can be opened fully, and the mesh cover can be flipped up, allowing for easy access to all parts from the ground during routine maintenance.
- The entire cab can be flipped backward, providing enough spaces for inspecting and repairing components such as pumps, motors, and valves, making maintenance convenient.



Bucket



Sweeper



Snow Blower



Cold Planer



Fork



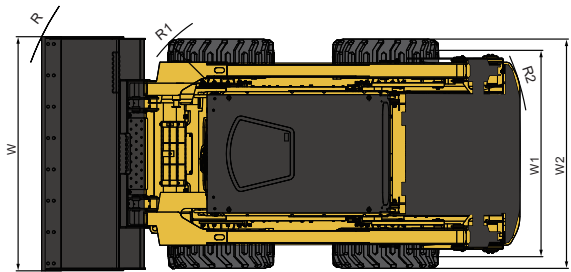
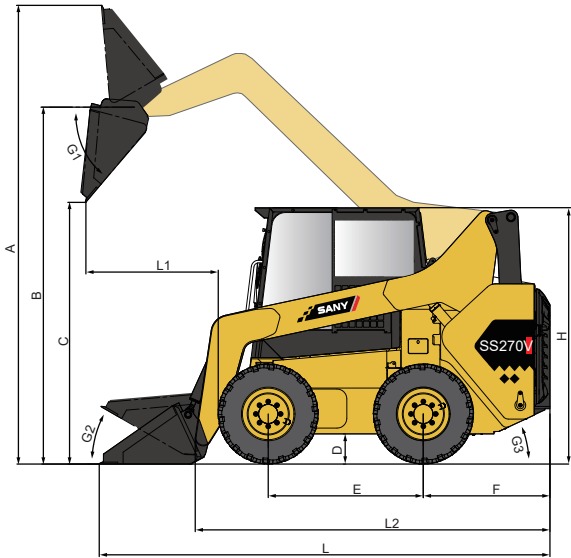
Forest Mulcher





OVERALL DIMENSIONS

| OVERALL DIMENSIONS |   | SS270V            |
|--------------------|---|-------------------|
| A                  | Maximum Overall Height                  | 4200 mm/ 165.5 in |
| B                  | Bucket Pin Height at Maximum Lift       | 3350 mm/ 132 in   |
| C                  | Clearance at Maximum Lift and Dump      | 2620 mm/ 103.2 in |
| L1                 | Reach at Maximum Lift and Dump          | 985 mm/ 38.8 in   |
| D                  | Ground Clearance                        | 228 mm/ 9 in      |
| E                  | Wheelbase                               | 1300 mm/ 51.2 in  |
| F                  | Bumper Overhang behind Rear Axle        | 1050 mm/ 41.4 in  |
| R                  | Turning Radius from Center-Bucket       | 2230 mm/ 87.9 in  |
| R1                 | Turning Radius from Center-Coupler      | 1352 mm/ 53.3 in  |
| R2                 | Turning Radius from Center-Machine Rear | 1733 mm/ 68.3 in  |
| G1                 | Maximum Dump Angle                      | 43°               |
| G2                 | Rollback Angle of Bucket on Ground      | 30°               |
| G3                 | Departure Angle                         | 25°               |
| L2                 | Length without Bucket                   | 2991 mm/ 117.8 in |
| L                  | Length with Bucket on Ground            | 3756 mm/ 148 in   |
| W1                 | Wheel Track                             | 1485 mm/ 58.5 in  |
| W2                 | Over the Tire Width                     | 1820 mm/ 71.7 in  |
| W                  | Over the Bucket Width                   | 1880 mm/ 74.1 in  |
| H                  | Height to Top of Cab                    | 2100 mm/ 82.7 in  |



TECHNICAL SPECIFICATIONS

| PERFORMANCE                   |                   |
|-------------------------------|-------------------|
| Rated Operating Capacity      | 1290 kg/2850 lb   |
| Operating Weight              | 4250 kg/9370 lb   |
| Bucket Capacity               | 0.5 m³/0.73 yd³   |
| Tipping Load                  | 2580 kg/5700 lb   |
| Breakout Force, Tilt Cylinder | 28.8 kN/6670 lb   |
| Breakout Force, Boom          | 25.5 kN/5737 lb   |
| Lift Geometry                 | Vertical Lift     |
| Travel Speed One              | 11.1 km/h/6.9 mph |
| Travel Speed Two              | 20 km/h/12.4 mph  |
| Cycle Time (Raise/Lower/Dump) | 9.3 s             |
| Tire Size                     | 12-16.5 14 PR     |

| HYDRAULIC SYSTEM          |                       |
|---------------------------|-----------------------|
| Loader Hydraulic Pressure | 230 bar/3335.9 psi    |
| Standard Hydraulic Flow   | 90 L/min/23.8 gal/min |
| High Hydraulic Flow       | 125 L/min/33 gal/min  |

| POWER SYSTEM  |                            |
|---------------|----------------------------|
| Engine Model  | YANMAR 4TNV98T             |
| Engine Speed  | 2400 rpm                   |
| Rated Power   | 61.3 kW/82.2 hp            |
| Peak Torque   | 280N·m/206 lbf-ft @1850rpm |
| Displacement  | 3.3 L/203 in³              |
| Bore x Stroke | φ98X110 mm/φ3.9 x4.3 in    |
| Aspiration    | Turbo-charger              |
| Emissions     | Stage III                  |

| CAPACITY             |                |
|----------------------|----------------|
| Battery Capacity     | 140 Ah         |
| Hydraulic Tank       | 39 L/10.3 gal  |
| Engine Oil           | 10.2 L/2.7 gal |
| Cooling System       | 12 L/3.2 gal   |
| Chain Box, Each Side | 9.5 L/2.5 gal  |
| Diesel Tank          | 100 L/26.4 gal |



# STANDARD CONFIGURATIONS

| ELECTRICAL SYSTEM           |   | CABIN                            |   |
|-----------------------------|---|----------------------------------|---|
| Backup Alarm                | ● | ROPS/FOPS Cab, Tilt Up           | ● |
| Heavy Duty Battery, 950 CCA | ● | Emergency Exit                   | ● |
| LED Front and Rear Lights   | ● | Fully Automatic Air Conditioning | ● |
| One-click Startup           | ● | Mechanical Suspension Seat       | ● |
| 7-inch Touch Screen         | ● | Rearview Mirror                  | ● |
| Rearview Camera System      | ● | Retractable Safety Belt          | ● |
| 12 volt Electric Socket     | ● | Safety Armrest                   | ● |
| USB Power Port              | ● | HYDRAULIC SYSTEM                 |   |
| 14-pin Electric Socket      | ● | Multi-function Joystick          | ● |
| Electrical Outlet, Beacon   | ● | ISO Pilot Control                | ● |
| Audio System                | ● | Two-speed Travel                 | ● |
| Pedal Throttle Control      | ● | Bucket Self-leveling System      | ● |
| Radio                       | ● | Hydraulic Quick Coupler          | ● |
| Bluetooth                   | ● | High Hydraulic Flow              | ● |
|                             |   | Boom Damping System              | ● |

# OPTIONAL CONFIGURATIONS

|                     |   |                       |   |
|---------------------|---|-----------------------|---|
| Air Suspension Seat | ○ | Assembled Blade Plate | ○ |
| Bucket Teeth        | ○ | Solid Tires           | ○ |

● indicates standard configuration ○ indicates optional configuration





