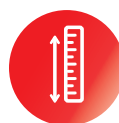


TRUCK-MOUNTED CONCRETE PUMP SYG5350THB 470C-10



Highly Reliable

- SANY has World-class lighthouse factories with top-level manufacturing capability, assuring reliable quality.
- Careful matching of components ensures stable performance of the whole machine.



Strong Pumping

- Single-button high/low pressure switch
- Multiple upgrades assure high suction rate
- Significant advantage in pumping efficiency



Extremely Economical

- The industry-leading longest service life of wear parts
- Advanced fuel combustion technology
- Targeted upgrades for different working conditions

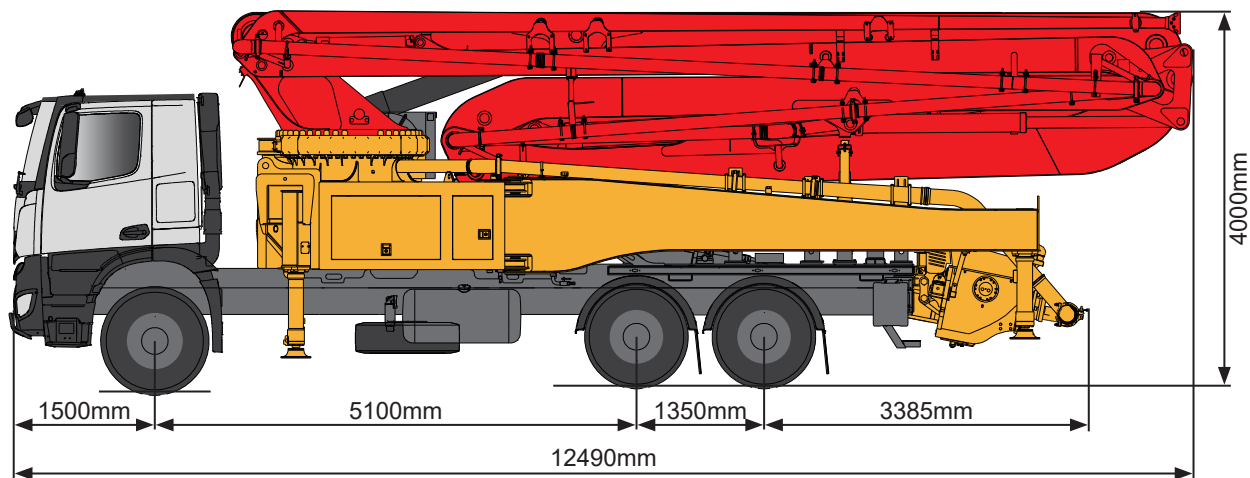


Ultimate User Experience

- Comfortable cab comparable to passenger car experience
- Multi-language human-machine interface
- Easy-maintenance



TECHNICAL SPECIFICATION



Note: standard dimensions version for SANY SYG5350THBCB 470C-10

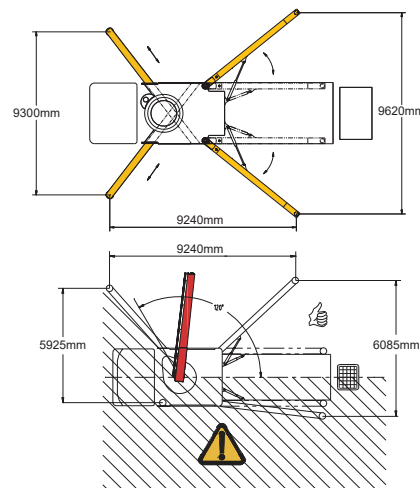
TECHNICAL DATA

Boom

| | |
|----------------------------|---------|
| Vertical reach | 47 m |
| Horizontal reach | 42 m |
| Depth reach | 29.3 m |
| Unfolded reach | 13.9 m |
| Rotation | ± 360 ° |
| Front outrigger spread L-R | 9300 mm |
| Rear outrigger spread L-R | 9620 mm |
| End hose length | 3 m |
| End hose diameter | 125 mm |
| Pipeline size | 125 mm |

Pumping system

| | |
|-------------------------------|---------------------|
| Theoretical output | 200 m³/h (137 m³/h) |
| Theoretical pressure | 8.3 MPa (12 MPa) |
| Delivery cylinder diameter | 260 mm |
| Stroke length | 1900 mm |
| Hydraulic system | Open |
| Hydraulic system oil pressure | 32 MPa |
| Oil tank capacity | 680 L |
| Water tank capacity | 620 L |
| Drive pump | Rexroth/Danfoss |
| Volume of hopper | 700 L |



DELIVERY & CONFIGURATIONS

Chassis

| |
|---------------------------------------|
| Brand: BENZ |
| Model: Arocs 3340 |
| Engine type: OM460 |
| Engine max net power: 290/1600 kW/rpm |
| Emission standard: Euro III |
| Capacity of fuel tank: 390 L |
| Displacement: 12.8 L |
| Max.speed: 90 km/h |

Functions

| |
|--|
| Agitator rotation, 2 direction |
| Single-button double piston return |
| Single-button high/low pressure switch |
| Auto-lubrication for core pump |

Safety

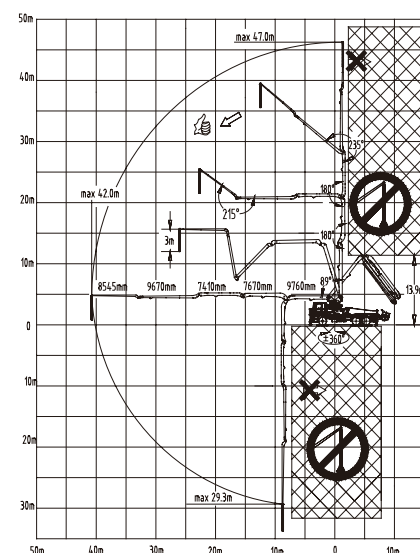
| |
|----------------------------------|
| Mushroom button for horn, yellow |
| Emergency stop |
| Hopper plate |

Cleaning

| |
|--------------------------|
| Sponge balls |
| High-pressure water pump |

Others

| |
|---|
| Remote control System, wired (optional) |
| Industrial display control screen 7" (optional) |
| Operating manual |
| MachineLink+ APP/web connected |
| 7 × 24 service with no worry |



SANY Industrial Park, Economic and Technological Development Zone,
Changsha, Hunan, China, 410100
Sales Hotline
Tel: 0086-731-85835199
Mail: sales@sanyglobal.com

Service Hotline
Tel: 0086-4006098318
Mail: CRD@sany.com.cn

www.sanyglobal.com

The product configuration (including technical parameters) is subject to change and the delivered actual machine without notice.