

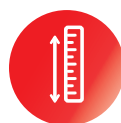
# TRUCK-MOUNTED CONCRETE PUMP

## SYG5310THB 430C-10



### Highly Reliable

- SANY has World-class lighthouse factories with top-level manufacturing capability, assuring reliable quality.
- Careful matching of components ensures stable performance of the whole machine.



### Strong Pumping

- Single-button high/low pressure switch
- Multiple upgrades assure high suction rate
- Significant advantage in pumping efficiency



### Extremely Economical

- The industry-leading longest service life of wear parts
- Advanced fuel combustion technology
- Targeted upgrades for different working conditions

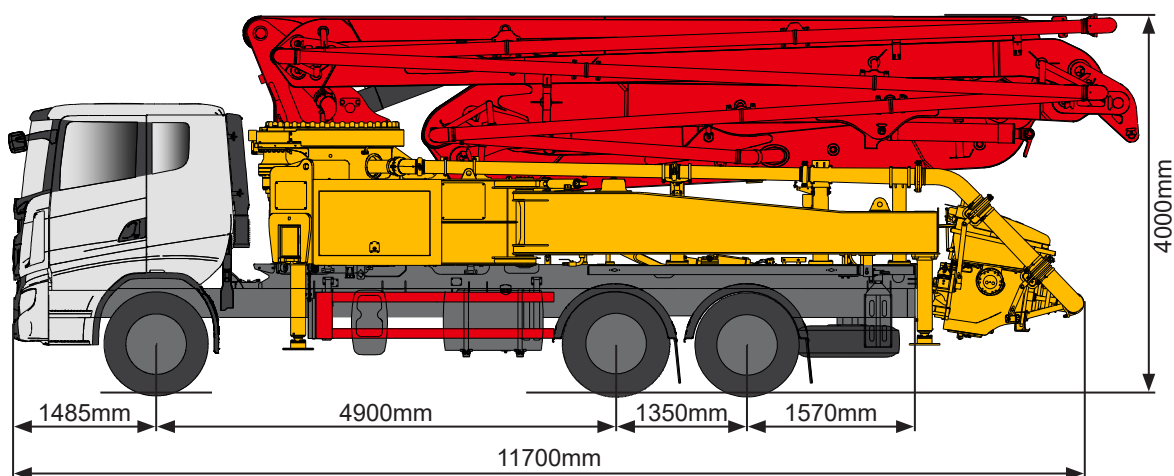


### Ultimate User Experience

- Comfortable cab comparable to passenger car experience
- Multi-language human-machine interface
- Easy-maintenance



## TECHNICAL SPECIFICATION



Note: standard dimensions version for SANY SYG5310THB 430C-10

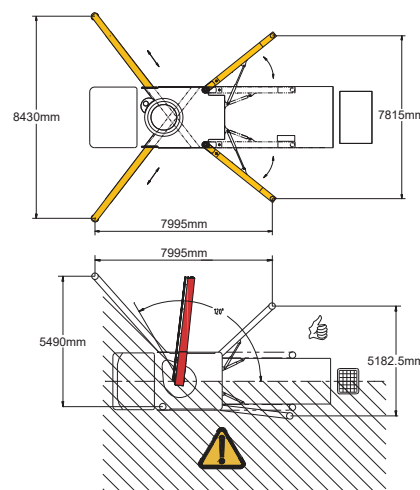
## TECHNICAL DATA

## Boom

Vertical reach	42.5 m
Horizontal reach	37.7 m
Depth reach	27 m
Unfolded reach	11 m
Rotation	$\pm 360^\circ$
Front outrigger spread L-R	8430 mm
Rear outrigger spread L-R	7815 mm
End hose length	3 m
End hose diameter	125 mm
Pipeline size	125 mm

## Pumping system

Theoretical output	160 m <sup>3</sup> /h (96 m <sup>3</sup> /h)
Theoretical pressure	7 MPa (12 MPa)
Delivery cylinder diameter	230 mm
Stroke length	1900 mm
Hydraulic system	Open
Hydraulic system oil pressure	32 MPa
Oil tank capacity	450 L
Water tank capacity	620 L
Drive pump	Rexroth
Volume of hopper	700 L



## DELIVERY & CONFIGURATIONS

## Chassis

Brand: SANY
Model: SYM5350THB1E
Engine type: D12C5-490E0
Engine max net power: 348/1900 kW/rpm
Emission standard: Euro V
Capacity of fuel tank: 600 L
Displacement: 12.12 L
Max.speed: 90 km/h

## Functions

Agitator rotation, 2 direction
Single-button double piston return
Single-button high/low pressure switch
Auto-lubrication for core pump

## Safety

Mushroom button for horn, yellow
Emergency stop
Hopper plate

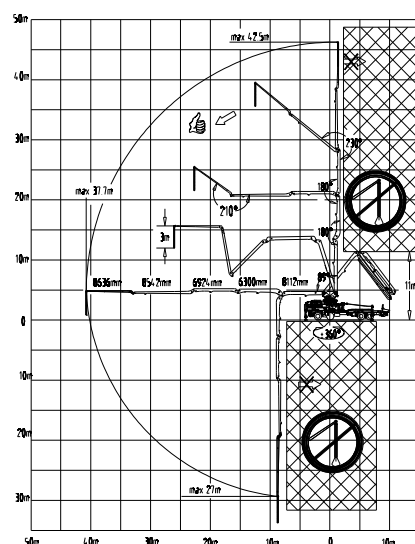
## Cleaning

Sponge balls

Large-flow water pump

## Others

Remote control System, wired (optional)
Industrial display control screen 7" (optional)
Operating manual
MachineLink+ APP/web connected
7 × 24 service with no worry



SANY Industrial Park, Economic and Technological Development Zone,  
Changsha, Hunan, China, 410100

Sales Hotline	Service Hotline
Tel: 0086-731-85835199	Tel: 0086-4006098318
Mail: <a href="mailto:sales@sanyglobal.com">sales@sanyglobal.com</a>	Mail: <a href="mailto:CRD@sany.com.cn">CRD@sany.com.cn</a>

Service Hotline  
Tel: 0086-4006098318  
Mail: CRD@sany.com.cn

**www.sanyglobal.com**

The product configuration (including technical parameters) is subject to change and the delivered actual machine without notice.