

SANY[®]

SPECIFICATION



50t



45.5m



46m

STC500BEV

SANY TRUCK CRANE

QUALITY CHANGES THE WORLD

www.sanyglobal.com

V1.0

It is one of the core business units in SANY Group, specializing in the development and manufacturing of high-end wheel cranes, crawler cranes and tower cranes, including the complete range of wheel cranes from 8 to 2400t, crawler cranes from 25 to 4500t and tower cranes from 6 to 185t.

三一集团旗下核心事业部，从事高端轮式起重机、履带起重机、塔式起重机系列产品的研发制造。覆盖8-2400吨全吨位轮式起重机，25-4500吨全吨位履带起重机，6-185吨塔式起重机。



SANY CRANE



Excellent Performance

优越起重性能

The crane boasts a height of 3.8m, with a 5 sections U-shaped cross-section boom made of high-strength structural steel. The full-extension length of boom 45.5m, maximum lifting height 46m, maximum lifting torque 2043 kN.m.

With an outrigger span of 7.4m × 6.05m and the standard inclusion of a fifth outrigger, the crane achieves greater lifting stability.

Equipped with a rated power of 270 kW and a maximum torque of 2400 Nm, the crane's drive motor is paired with a Green Control 4-speed AMT transmission, providing robust performance and smooth gear shifts, with a reduction in operational noise of over 10% compared to traditional fuel-powered cranes.

Featuring a high-performance 282 kWh lithium iron phosphate battery from CATL.

Supports dual-gun DC fast charging, requiring only 1.1 hours to fully charge (from 10% to 100%).

Incorporates a high-pressure dual-pump load-sensitive pump, the M28S intelligent flow-sharing valve developed independently by Sany, and a volumetric variable speed system composed of quantitative plunger motors, ensuring efficient and energy-saving operations (with a maximum oil supply of up to 380 L/min, stable system pressure of up to 35 MPa, and the strongest lifting performance in its class), precise hoisting (fluid control handle for responsive, delay-free, and linear control; hydraulic cylinders capable of achieving a minimum stable speed of millimeters per micro-move, with a uniform descent rate of 1°/s).

Equipped with a 40 kW on-board charger, requiring only 6.4 hours for a full charge (from 10% to 100%), supporting plug-in operations at 380V (optional 220V), with a power requirement of just 20 kW and only 6 cables, making it more convenient for small-scale transitions.

3.8m车高，起重臂采用高强度结构钢，5节臂，截面为U型截面。

主臂全伸长45.5m，最大起吊高度46m，最大起重力矩达2043kN.m。

7.4m × 6.05m支腿跨距，标配第五支腿，吊载稳定性更强。

搭载绿控额定270kW，最大2400Nm驱动电机匹配绿控4档AMT变速箱，性能强劲，换挡舒适平顺，行驶作业噪音较燃油车降低10%以上。

搭载宁德时代282kWh高性能磷酸铁锂电池。

支持双枪直流快充，充满仅需1.1h(10%-100%)。

高压双联负载敏感泵+三一自主研发的M28S智能分合流多路阀+定量柱塞马达组成的容积调速系统，作业高效节能(最大供油量可达380L/min，同时又能做到按需分配)、动力强劲(最高35Mpa稳定的系统压力，吊载性能同级最强)、精准吊装(液控手柄控制，操控无延迟，无死区，操控线性度强；油缸实现最低稳定速度毫米微动，1°/s的匀速落幅)。

搭载40kW车载充电机，充满只需6.4h(10%-100%)，支持380V(选配220V)插电作业，功率仅需20kW，线缆仅6方，小范围转场更方便。

Excellent Quality

品质优良

Utilizes Sany's self-made slewing buffer control valve and features free sliding dynamic braking technology, ensuring smooth and gentle slewing start and stop.

Incorporates forward Tilt Prevention Technology of boom to ensure safer braking.

Implements fall pressure compensation technology to ensure uniform fall speed, effectively addressing the issue of rapid descent due to self-weight.

采用三一自制回转缓冲控制阀、拥有自由滑动动态制动技术，回转启停柔和平稳。

采用防蹯臂技术，保证刹车更安全。

落幅压力补偿技术，保证匀速落幅，彻底解决自重落幅越落越快问题。



SANY TRUCK CRANE STC500BEV / 50T LIFTING CAPACITY

Safety and Reliability

安全可靠

Adopts a high-precision, high-stability, and highly intelligent load moment indicator system to comprehensively protect lifting operations.

Automatically alerts in case of overload operations, providing safety assurance for maneuvering operations.

Equipped with imported outrigger hydraulic locks, luffing and telescoping balance valves to ensure zero cylinder leakage, with renowned oil pumps and motors ensuring quality assurance.

采用高精度、高稳定性、高智能化的力矩限制器系统，全方位保护吊装作业。

超载作业时，系统自动报警提示，为操纵作业提供安全保障。

进口支腿液压锁，变幅、伸缩平衡阀保障油缸零泄漏不掉缸，油泵、马达国内大牌，品质有保障。

GCP Remote Control

GCP远程控制

Equipped with a remote monitoring and management system for real-time monitoring of operational conditions and parameters, supporting remote fault diagnosis and management.

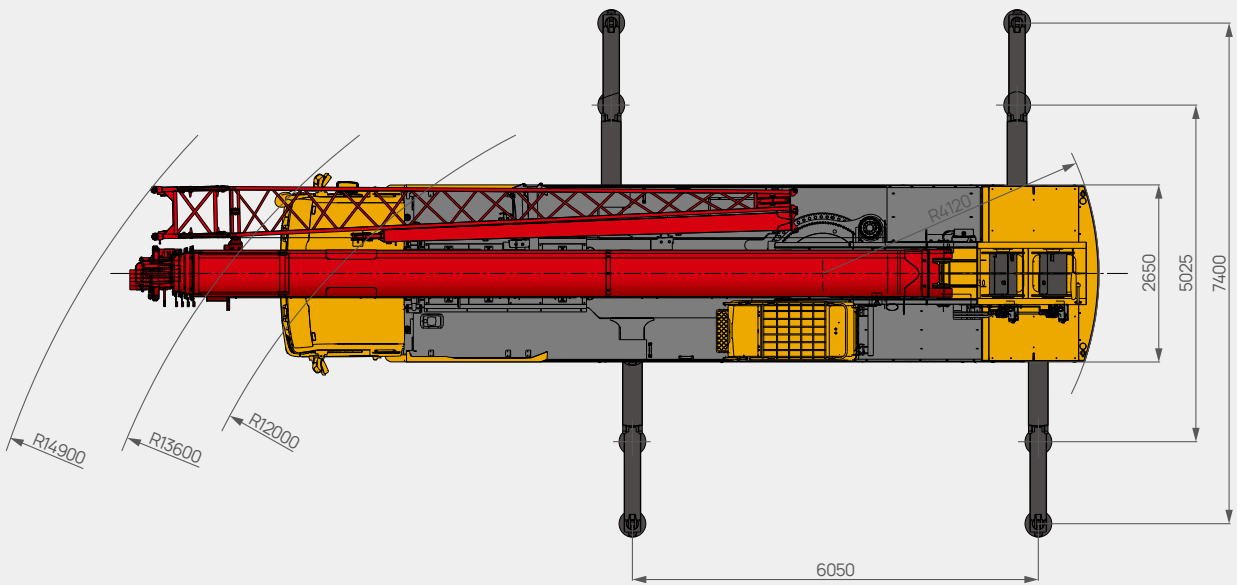
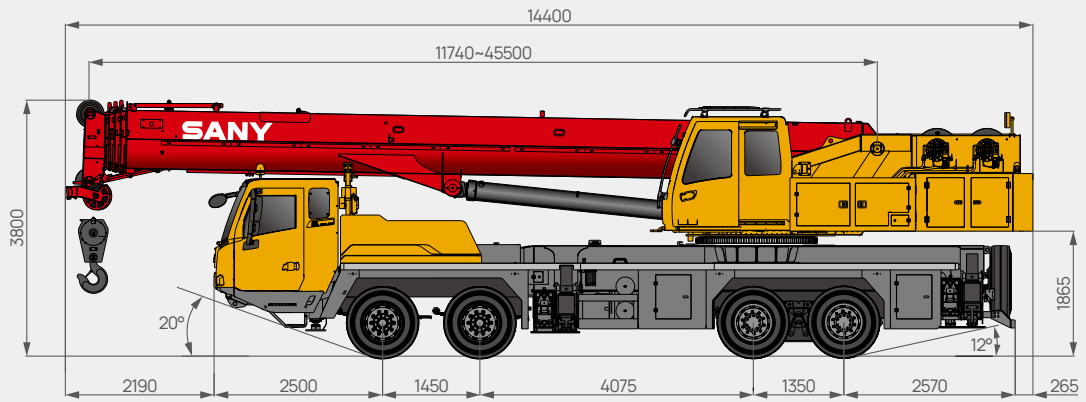
Customers can remotely access equipment operation status, query, and order accessories without leaving their location.

搭载远程监控管理系统，实时监控运行工况、作业参数，支持远程故障诊断、管理。客户足不出户可掌握设备的运行情况、查询和订购配件。



Overall Dimensions

整机尺寸



Technical Specification

整机参数

CATEGORY 类型	ITEM 项目	UNIT 单位	VALUE 参数	
CAPACITY 额定起重量	Max. lifting capacity 最大起重量	t	50	
WEIGHT 重量	Gross weight 整机总质量	kg	40330	
MAIN DRIVE MOTOR 主驱电机参数	Motor model 电机型号	-	TZ460XS-LKM2401	
	Rated/peak power 电机额定 / 最大功率	kW/rpm	270/405	
	Rated/peak torque 电机额定 / 最大扭矩	N·m/rpm	1150/2400	
DIMENSIONS 尺寸参数	Overall length 整机全长	mm	14400	
	Overall width 整机全宽	mm	2650	
	Overall height 整机全高	mm	3800	
TRAVEL 行驶参数	Max. travel speed 最高行驶速度	km/h	≥95	
	Steering radius 转弯半径	Min. steering radius 最小转弯半径	m	12
		Min. steering radius of boom tip 臂头最小转弯半径	m	14.9
	Min. ground clearance 最小离地间隙	mm	250	
	Approach angle 接近角	°	20	
	Departure angle 离去角	°	12	
	制动距离(车速为30km/h)	m	10	
	Max. gradeability 最大爬坡度	-	51%	
MAIN PERFORMANCE 主要性能参数	Working temperature range 使用温度区间	°C	-25~+55	
	Min. rated lifting radius 最小额定幅度	m	3	
	Tail slewing radius 转台尾部回转半径	mm	4120	
	Boom sections (Qty.) 臂节数	-	5	
	Boom shape 臂形状	-	U shape U型	
	Max. lifting moment 最大起重力矩	Basic boom 基本臂	kN·m	2043
		Full-extension boom 全伸主臂	kN·m	1239
	Boom length 臂长	Basic boom 基本臂	m	11.74
		Full-extension boom 全伸主臂	m	45.5
		Full-extension boom + jib 全伸主臂 + 副臂	m	62
	Max. lifting height 最大起重高度	Basic boom 基本臂	m	46
		Full-extension boom 全伸主臂	m	46
		Full-extension boom + jib 全伸主臂 + 副臂	m	62
Outrigger span (Longitudinal × Transverse) 支腿跨距(纵 × 横)	m	7.4 × 6.05		
Jib offset 副臂安装角度	°	0, 15, 30		
AIRCONDITIONER 空调	In operator's cab 上车空调	-	Heating & Cooling 制冷、制热	
	In driver's cab 下车空调	-	Heating & Cooling 制冷、制热	

Technical Specification

整机参数



Axle Load 轴荷

Axle 轴	1	2	3	4	Gross weight 总重量
Axle load 轴荷 /t	14	14	26	26	80



Hook 吊钩

Rated load 额载 /t	Number of sheaves 滑轮数量	Rope rate 倍率	Hook weight/kg 吊钩重量
60	6	12	550
6	-	-	120



Operations 主要动作参数

Item 项目	Max.single rope lifting speed (empty load) 单绳速度 (空载)	Rope diameter/length 钢丝绳直径 / 长度	Max. single line pull 最大单绳拉力
Main winch 主卷扬	0-120m/min	Φ18mm/215m	5t
Auxiliary winch 副卷扬	0-120m/min	Φ18mm/135m	5t
Slewing speed 回转速度	0-2r/min		
Full luffing up/down time of boom 主臂起落幅时间	60s/90s		
Full extension/retraction time of boom 主臂伸缩时间	100s/120s		
Outrigger jack 垂直支腿	Extension 伸	30s	
	Retraction 缩	30s	
Outrigger beam 水平支腿	Extension 伸	20s	
	Retraction 缩	20s	

Crane Introduction

整机介绍

Driver's cab 驾驶室

- Sany independently developed the 312 cab, with the overall frame made of corrosion-resistant steel plates. It is equipped with ergonomically designed airbag shock-absorbing seats for comfortable seating. The cab features rubber shock-absorbing suspension, three-point safety belts for both the main and co-drivers, an adjustable steering wheel, and wide-view rearview mirror. It comes with a full LCD instrument panel, central control large screen (integrated with a rearview camera). The cab is also equipped with high-voltage electric air conditioning for a more comfortable driving experience.
- 312 驾驶室, 整体框架由耐腐蚀钢板制成, 配备人机工程学气囊减震座椅, 乘坐舒适。配备橡胶减震驾驶室悬置, 主副驾三点式安全带, 可调整式方向盘, 大视野后视镜。配备液晶仪表、中控大屏(集成倒车影像)以及高压电冷暖空调。

Carrier frame 车架

- Designed and manufactured by Sany, the anti-torsion box-type structure welded with high-strength steel, featuring increased bearing capacity.
- 三一自主设计、制造, 由细晶粒高强度钢板焊接而成, 防扭转箱形结构, 承载能力强。

Drive motor 电机

- Model: Permanent magnet synchronous AC motor.
- Rated / maximum power: 270kW/405rpm.
- Rated / maximum torque: 1150N·m/2400rpm.
- 型式: 永磁同步交流电机。
- 额定/最大功率: 270kW/405rpm。
- 额定/最大扭矩: 1150N·m/2400rpm。

Transmission 变速箱

- Type: AMT gearbox, offering convenient and comfortable driving.
- Gears: 4-speed, providing higher transmission efficiency.
- 型式: AMT变速箱, 驾驶便捷舒适。
- 档位: 4档, 传动效率更高。

High-voltage electrical control system 高压电控系统

- Utilizing industry high-quality motor controllers, capable of achieving stepless speed regulation, with high control precision, a wide speed range, and high power factor.
- 采用行业高品质电机控制器, 能够实现无级调速, 控制精度高、调速范围大, 功率因素高。

车载充电机

- Employing a high-quality 40 kW on-board charger, supporting plug-in operations at 380V (optional 220V), with a power requirement of just 20 kW, and only 6 cables, making it more convenient for small-scale transitions.
- 采用行业高品质 40kW 车载充电机, 支持 380V(选配 220V) 插电作业, 功率仅需 20kW, 线缆仅 6 方, 小范围转场更方便。

Axle 车桥

- Using high-quality Hande axles, axles 1, 2 are steered, axles 3, 4 are drive axles with built-in differential lock, realizing tougher ability to rough-terrain traveling.
- 采用高品质汉德车桥, 1、2 轴为转向轴, 3、4 轴为驱动轴; 带有轮间和轴间差速, 脱困能力强。

Suspension system 悬挂系统

- The front two axles utilize longitudinal leaf spring non-independent suspension, while the middle and rear axles adopt rubber suspension. The system's strength is verified by 100,000 cycling fatigue tests to ensure both strength and ride comfort.
- 前两轴采用纵置钢板非独立悬架, 中后轴采用橡胶悬架, 悬挂系统经过超过 10 万次的疲劳试验, 保证强度的同时兼顾乘坐的舒适性。

Tires 轮胎

- 13 radial vacuum tires sized 315/80R22.5, strong bearing capacity and durability.
- 13(轮胎数), 轮胎规格: 315/80R22.5, 钢丝真空轮胎, 承载能力大, 耐用。

Wheel formula 车轮模式

- 8 × 4.

Outrigger 支腿

- H-type layout, four point support with high strength steel plate, span (longitudinal × transverse) of 6.05 × 7.4m, easy to operate. Outriggers hydraulically telescoping at horizontal directions.
- H 型支腿 4 点支撑, 纵、横跨距 6.05m × 7.4m, 易操作、稳定性强; 采用细晶粒高强度钢板材料, 一、二级支腿全液压横向伸缩。支腿垂直油缸采用双向液压锁进行安全保护。

Brake 制动系统

- Using an electric air compressor to provide the braking power source.
- The braking system includes service brake & parking brake & emergency brake & assisting brake.
- Service brake: air servo, dual circuit.
- Parking brake: functioning at axles 3 and 4 by spring-loaded air chamber.
- Emergency brake: the parking brake system doubles as the emergency brake.
- Assisting brake: engine exhaust brake, safety assured when driving down long slopes.
- 使用电动空压机提供制动动力源。
- 制动系统包括行车制动、驻车制动、应急制动和辅助制动。
- 行车制动采用双回路制动系统, 所有车轮均用空气伺服制动器。
- 驻车制动是通过气室内弹簧作用在第三、四桥上; 应急制动阀由驻车制动系统兼做应急制动。
- 辅助制动为电机能量回收, 保证下长坡时的制动安全, 同时提升整车续航。

Electrical system 电气系统

- 2*12V maintenance-free battery with a mechanical power switch, the overall power can be cut off manually. CAN instrument, data integration between superstructure and chassis.
- 2 × 12V 免维护蓄电池, 配有机械式电源总开关, 可手动切断整车电源; 总线控制系统, 可实现上下车信息交互。

Crane Introduction

整机介绍

Superstructure 上车

Battery system 电池系统

- Equipped with a high-performance 282 kWh lithium iron phosphate battery system from CATL, with a rated capacity of 456 Ah. Each battery cell can be fully charged and discharged up to 4000 times. After undergoing rigorous tests such as vibration, compression, simulated collisions, and thermal diffusion, the battery system has been validated to be reliable, fireproof, explosion-proof, and maintenance-free throughout its entire lifecycle.
- 配备宁德时代 282kWh 高性能磷酸铁锂电池系统，额定容量 456Ah，电池单体充满放电可达 4000 次。经过振动、挤压、模拟碰撞、热扩散等严苛测试验证，质量可靠，不起火，不爆炸，整个生命周期内免维护。

Operator's cab 操纵室

- 312 operator's cab, novel and unique, designed according to ergonomics principles, providing a larger internal space. With safety glass, panoramic skylight, adjustable seats, embodying user-friendly design. Equipped with electric air conditioning and electric windshield wipers for enhanced comfort during operation. Featuring a 7-inch display screen, seamlessly integrating the control panel with the operational display system, providing clear visibility of all lifting operation parameters.
- 312操纵室，新颖独特，符合人体工程学设计，更大内部空间；采用安全玻璃，耐腐蚀钢板，配置全覆盖软化内饰、全景式天窗、可调式座椅等人性化设计，配有电空调、电动雨刮器，操作更舒适；配置7英寸显示屏，实现主控台与操作显示系统有机结合，使吊装作业的全部工况数据一目了然。

Boom & telescoping system 伸缩系统

- Five section U-shape boom welded by high strength structural steel, single board boom head design. Full-extension boom 45.5m, jib 16m, max. lifting height of full-extension boom 46m, max. lifting height of boom+jib 62m. Telescoping is realized by double cylinder with rope arranger.
- 五节臂，单臂头，全伸臂长45.5m，副臂16m，主臂全伸起升高度46m，带副臂最大起升高度62m。由高强度焊接结构钢制成，U形截面，双缸+绳排伸缩方式。

Hoist 起升机构

- Normally closed type winch brake, winch balance valve coupled with exclusive anti-slip tech contribute to smoother hoisting.
- Main hook: 552kg, maximum lifting weight of 50t.
- Auxiliary hook: 100kg, maximum lifting weight of 5t.
- Main Wire Rope: Left-hand rotation wire rope 18-4V × 39S-5FC-1960, Length 215m.
- Auxiliary Wire Rope: Left-hand rotation wire rope 18-4V × 39S-5FC-1960, Length 135m.
- 常闭式卷扬制动器，卷扬平衡阀与独特的防溜钩技术完美结合，重物起落平稳。
- 主钩：552kg，最大吊重量为 50t，副钩：100kg，最大吊重量为 5t。主卷钢丝绳：左旋钢丝绳 18-4V × 39S-5FC-1960 L215m；副卷钢丝绳：左旋钢丝绳 18-4V × 39S-5FC-1960 L135m。

Luffing system 变幅系统

- Passive luffing down, improving the smoothness of luffing operation.
- Luffing angle: -2°~80°.
- 采用自重落幅系统，降低能耗，提高落幅操作的平稳性。
- 变幅角度：-2°~80°。

Slewing 回转系统

- 360° slewing and max. slewing speed 2r/min, hydraulic proportional speed regulation, the action is stable and the system is reliable. Unique slewing buffer design, make the braking more stable.
- 360° 回转，最大回转速度 2r/min，采用液控比例调速控制，动作稳定，系统可靠；独特的回转缓冲设计，制动更平稳。

Hydraulics 液压系统

- High quality main oil pump, main valve, winch motor, slewing motor, balance valve and other key hydraulic components, to ensure the stability and reliability of the hydraulic system; The main valve has flow compensation and load feedback control functions, which can easily realize the stable control of single action and combined action under various working conditions.
- High quality winch motor, making operation reliable; Max. single rope speed of main winch and auxiliary winch 120/min.
- Adopts new hydraulic control variable slewing system, smooth slewing start & control with excellent inching performance.
- Load-sensitive system: Utilizing high-flow dual-variable piston pumps to ensure sufficient but non-wasteful flow, promoting efficient and energy-saving operations.
- Intelligent flow distribution: Employing a new intelligent flow distribution main valve, allowing independent luffing when combined actions are performed without interference from other actions, significantly enhancing control during combined actions. Utilizing valve compensation technology to distribute flow as needed, resulting in outstanding inching performance and control performance, meeting various precise hoisting requirements.
- Dynamic compensation for passive luffing down: Ensuring smooth and steady passive luffing down.
- Integrated slewing buffer control: Integrating boost buffering, sequential braking, and free sliding technologies to ensure smooth and gentle slewing start and stop.
- High-power cooling system: Utilizing a new electric motor-driven radiator to meet the demands of various harsh environments.
- 采用稳定、高品质的主油泵、主阀、卷扬马达、回转马达、平衡阀等关键液压件，系统可靠性高；通过精确的参数匹配，操控性能优越，主阀具备流量补偿、负载反馈控制功能，能在各种工况下，轻松实现单个动作和组合动作的稳定控制。
- 卷扬采用高品质马达，作业可靠，主、副卷扬单绳最大速度达 120m/min。
- 采用新型液控变量回转系统，回转启动和控制更为平稳，微动性更卓越。
- 负载敏感系统：采用大流量双联变量柱塞泵，流量充足但无浪费，作业高效节能。
- 智能流量分配：使用全新智能流量分配主阀，组合动作时变幅独立，不受其他动作干扰，大幅提升组合动作操控性。采用阀后补偿技术，流量按需分配，微动性和操控性卓越，满足各种精准吊装。
- 动态补偿自重落幅技术：自重落幅，保证落幅匀速平稳。
- 集成回转缓冲控制：融合升压缓冲、顺序制动及自由滑转技术，回转启停柔和平稳。
- 大功率散热系统：采用全新电动马达驱动散热器，满足各种恶劣环境使用。

Crane Introduction

整机介绍



Control system 控制系统

- High-precision torque display, multi-dimensional safety detection, providing comprehensive safety assurance.
- Controller, display, instrument panel, sensors, etc., are interconnected via CAN bus, ensuring high-speed intelligence.
- Intelligent controller, BCM control module, fault self-diagnosis system, ensuring worry-free operations.
- Dedicated battery compartment, equipped with DC-DC charging, intelligent distribution and control of vehicle power.
- 高精度力矩显示，多维度安全检测，全方位安全保障。
- 控制器、显示器、仪表、传感器等采用CAN总线组网，高速智能。
- 智能控制器，BCM控制模块、故障自诊断系统，作业更省心。
- 专用电瓶仓，配置DC-DC充电，整车电量智能分配和控制。



Counterweight 配重

- Fixed counterweight 5.8t, movable counterweight 4.7t.
- 固定配重 5.8t+活动配重 4.7t。

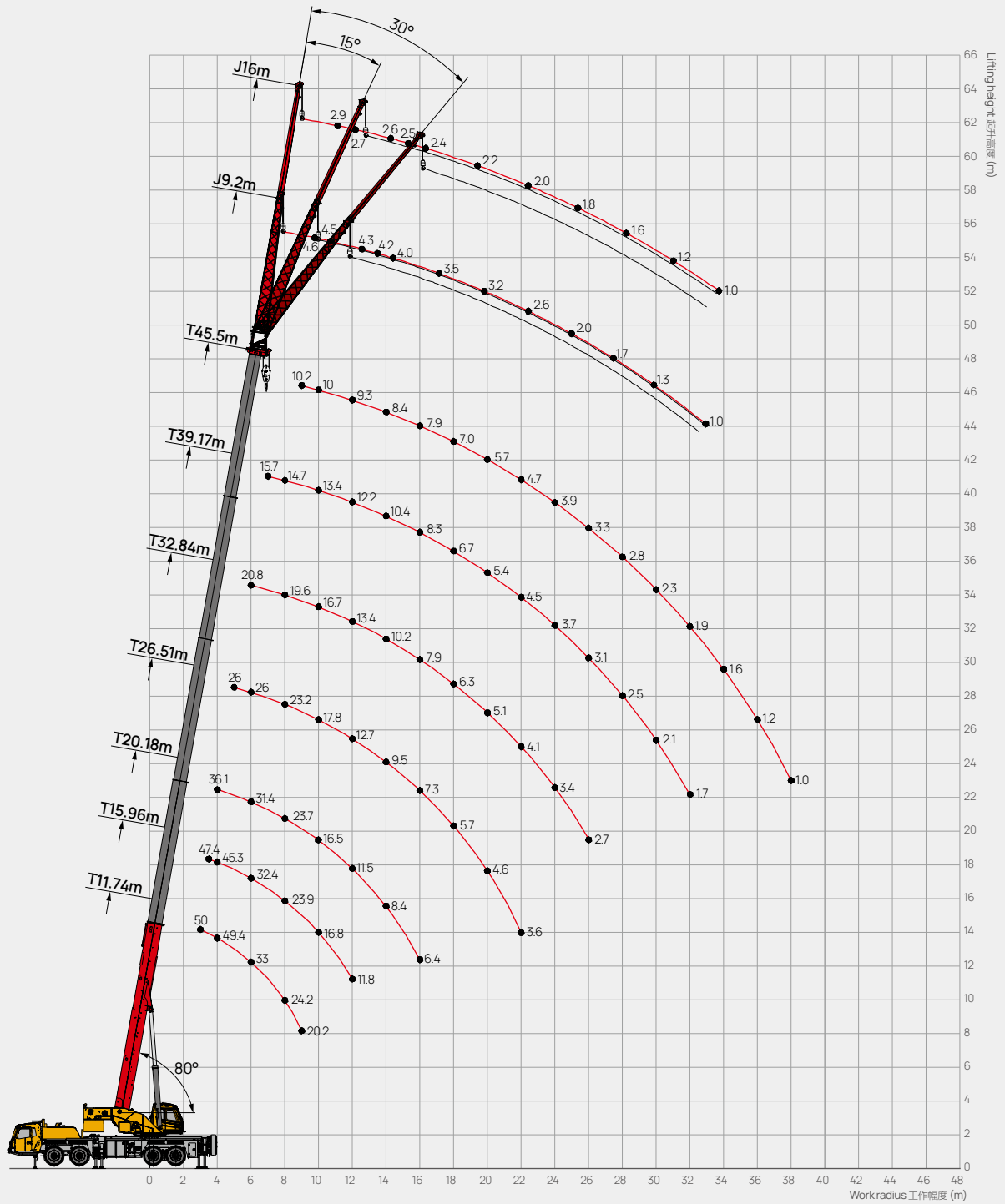


Safety equipment 安全装置

- Load moment indicator: A method of analytical mechanics is adopted and a moment limiter calculation system based on the hoisting mechanics model is established. Through online empty-load calibration, the rated hoisting accuracy can reach $\pm 3\%$ to fully protect the hoisting operation. During overload operations, the system automatically provides warning alerts to ensure safe operation and control.
- The hydraulic system is equipped with hydraulic balance valve, overflow valve, two-way holding valve, etc. to realize stability and reliability.
- The main and auxiliary winches are equipped with three-turn protectors to prevent over-releasing of the wire rope.
- Boom head is equipped with A2B limit switch to prevent the wire rope from over winding.
- The length sensor and pressure sensor are equipped to display the operating status of the crane in real time, automatically cut off dangerous actions, and give a buzzer alarm.
- 力矩限制器：采用分析力学方法，建立了基于吊重力学模型的力矩限制器计算系统，通过在线空载标定，额定吊重精度达到 $\pm 3\%$ ，全方位保护吊载作业；超载作业时，系统自动报警提示，为操纵作业提供安全保障。
- 液压系统配置液压平衡阀、溢流阀、双向液压锁等元件，实现液压系统安全可靠。
- 主、副卷扬配置三圈保护器，防止钢丝绳过放。
- 主、副臂端配置高度限位器，防止钢丝绳过卷。
- 配置长度角度传感器、压力传感器，实时显示起重机作业状态，自动切断危险动作，蜂鸣报警。

Operating Range - Telescopic Boom (T)

起升高度曲线 - 主臂











Load Chart - Telescopic Boom

性能表 - 主臂

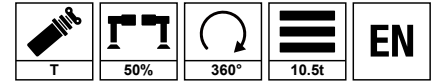
Unit: kg











 m	11.7	16	20.2	26.5	32.8	39.2	45.5	18.1	24.4	30.7	37.1	22.3	28.6	35	41.3	 m
3	50000															3
3.5	50000	47400						26000				26000				3.5
4	49400	45300	36100					26000	25000			26000				4
4.5	44800	43300	36100	26000				26000	25000			26000				4.5
5	41700	40200	35000	26000				26000	25000			26000	25000			5
6	33000	32400	31400	26000	20800			26000	24200	17000		26000	25000			6
7	28300	26800	27300	25200	20800	15700		26000	22700	16400	12500	26000	24500	16500		7
8	24200	23900	23700	23200	19600	14700		23400	20800	15000	12100	24300	22300	15400	12000	8
9	20200	19600	19300	20600	17800	14000	10200	21100	19200	13900	11400	20700	20600	14400	11300	9
10		16800	16500	17800	16700	13400	10000	17700	17400	13000	10700	17200	17800	13500	10800	10
12		11800	11500	12700	13400	12200	9300	13700	14400	11300	9500	13100	13800	12100	9900	12
14			8400	9500	10200	10400	8400	10500	11100	9900	8500	9900	10600	10400	8900	14
16			6400	7300	7900	8300	7900		8800	8800	7600	7700	8300	8700	8200	16
18				5700	6300	6700	7000		7200	7500	6800	6000	6700	7100	7000	18
20				4600	5100	5400	5700		5900	6300	6100		5400	5800	6100	20
22				3600	4100	4500	4700			5300	5400		4400	4800	5100	22
24					3400	3700	3900			4400	4700		3700	4000	4300	24
26					2700	3100	3300			3800	4000			3400	3600	26
28						2500	2800				3400			2900	3100	28
30						2100	2300				2900			2400	2600	30
32						1700	1900				2500				2200	32
34							1600								1900	34
36							1200								1600	36
38							1000									38
40																40
	12	11	9	6	5	4	3	6	6	4	3	6	5	4	3	
	0	50	100	100	100	100	100	0	0	0	0	50	50	50	50	
	0	0	0	25	50	75	100	25	50	75	100	25	50	75	100	

Load Chart - Telescopic Boom

性能表 - 主臂

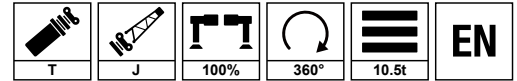


Unit: kg

 m	11.7	16	20.2	26.5	32.8	39.2	45.5	18.1	24.4	30.7	37.1	22.3	28.6	35	41.3	 m
3	50000															3
3.5	50000	47400						26000				26000				3.5
4	49400	45300	36100					26000	25000			26000				4
4.5	41300	40700	36100	26000				26000	25000			26000				4.5
5	32300	31800	31400	26000				26000	25000			26000	25000			5
6	22100	21600	21300	22400	20800			23200	23800	17000		22700	23300			6
7	16400	15900	15700	16600	17200	15700		17400	17900	16400	12500	16900	17500	16500		7
8	12700	12400	12100	13000	13500	13900		13700	14200	14500	12100	13300	13800	14200	12000	8
9	10200	9900	9600	10500	11000	11300	10200	11100	11600	11900	11400	10700	11200	11600	11300	9
10		8100	7800	8600	9100	9400	9700	9300	9700	10000	10200	8900	9400	9700	9900	10
12		5600	5400	6100	6500	6800	7100	6700	7100	7400	7600	6300	6800	7100	7300	12
14			3800	4400	4900	5100	5400	5100	5400	5700	5900	4700	5100	5400	5600	14
16			2600	3300	3700	4000	4200		4300	4500	4700	3500	3900	4200	4400	16
18				2400	2800	3100	3300		3400	3600	3800	2700	3100	3300	3500	18
20				1800	2200	2400	2600		2700	2900	3100		2400	2600	2800	20
22				1300	1600	1900	2100			2400	2500		1900	2100	2300	22
24					1200	1400	1600			2000	2100		1400	1700	1900	24
26						1100	1300			1600	1700			1300	1500	26
28							1000					1400		1000	1200	28
30												1200			900	30
32												900				32
	12	11	9	6	5	4	3	6	6	4	3	6	5	4	3	
	0	50	100	100	100	100	100	0	0	0	0	50	50	50	50	
	0	0	0	25	50	75	100	25	50	75	100	25	50	75	100	

Load Chart - Fixed Jib

性能表 - 副臂



Unit: kg

	45.5m+9.2m			45.5m+16m			
	0°	15°	30°	0°	15°	30°	
78	4600	3300	2500	2900	1900	1400	78
77	4500	3200	2500	2700	1800	1350	77
75	4300	3100	2500	2600	1700	1300	75
74	4200	3000	2400	2500	1700	1250	74
73	4000	2800	2300	2400	1600	1200	73
70	3500	2700	2200	2200	1500	1150	70
67	3200	2500	2000	2000	1400	1150	67
64	2600	2100	1900	1800	1300	1100	64
61	2000	1700	1600	1600	1200	1000	61
58	1700	1400	1300	1200	1100	1000	58
55	1300	1100	1100	1000	900	800	55
51	1000	800	800				51
	1						
	5						

Remark:

- Value listed are the max. capacity when the crane is in a level condition on solid ground or surface.
- Radius refers to actual radius with boom deflection considered.
- The determination of rated load values in the load chart follows ISO 4305.
- Value above are calculated with hooks and lifting slings considered.
- When the fifth outrigger is landed in position, value listed are applicable for 360 degree operation.
- Rated lifting performance on boom point sheave equals 5000kg; boom load capacity shall be 2300kg less than value given when jib unfolds.
- Load value is given according to the larger radius or boom length value when the actual radius or boom length falls between two numbers above.

备注:

- 起重性能表中给定数值是在平整坚固的地面上，整机调平状态下起重机的额定起重量。
- 起重性能表中工作幅度是指吊载后的实际幅度。
- 起重性能表中的稳定性决定的额定载荷数值的确定遵循 ISO4305。
- 起重性能表中额定起重量包括起重物和吊具的重量。
- 打开好第五支腿时，表中数值适用于全方位 (360°) 作业。
- 使用臂尖滑轮时额定起重量不超过 5000kg。若副起重臂处于展开状态，主臂起吊的额定起重量应减少 2300kg。
- 如果实际臂长和幅度介于两个数值之间时，取较长的臂长及较大的幅度所决定的额定起重量进行起吊作业。



SANY GROUP CRANE BU

SANY Mobile Crane Industrial Park, No.168 Jinzhou Avenue, Jinzhou Development Zone, Changsha City,
Hunan Province, P.R. China Zip 410600
Consulting sanycrane@sanygroup.com (Crane BU) / crd@sany.com.cn (IHQ)
After-sales Service 0086-400 6098 318

Reminder:

Any change in the technical parameters and configuration due to product modification or upgrade may occur without prior notice.
The machine in the picture may include additional equipment. This brochure is for reference only, and goods in kind shall prevail.
Copyright at SANY. No part of this brochure may be copied or used for any purpose without written approval from SANY.

© Edited in April 2024

三一集团起重事业部

中国湖南长沙金洲开发区金洲大道 168 号 三一汽车起重机产业园 邮编: 410600
咨询: sanycrane@sanygroup.com (起重事业部) / crd@sany.com.cn (国际总部)
海外售后服务: 0086-400 6098 318

温馨提示:

由于技术不断更新, 技术参数及配置如有更改, 恕不另行通知。图中机器可能包括附加设备, 本画册仅供参考, 以实物为准。
版权为三一所有, 未经三一书面许可, 本画册任何内容不得被复制用于任何目的。

© 2024 年 4 月版

