

# SPK 8500

## KNUCKLE BOOM CRANE

IDEAL LIFTING SOLUTION FOR 2 AXLE TRUCKS



TECHINICAL SPECIFICATION

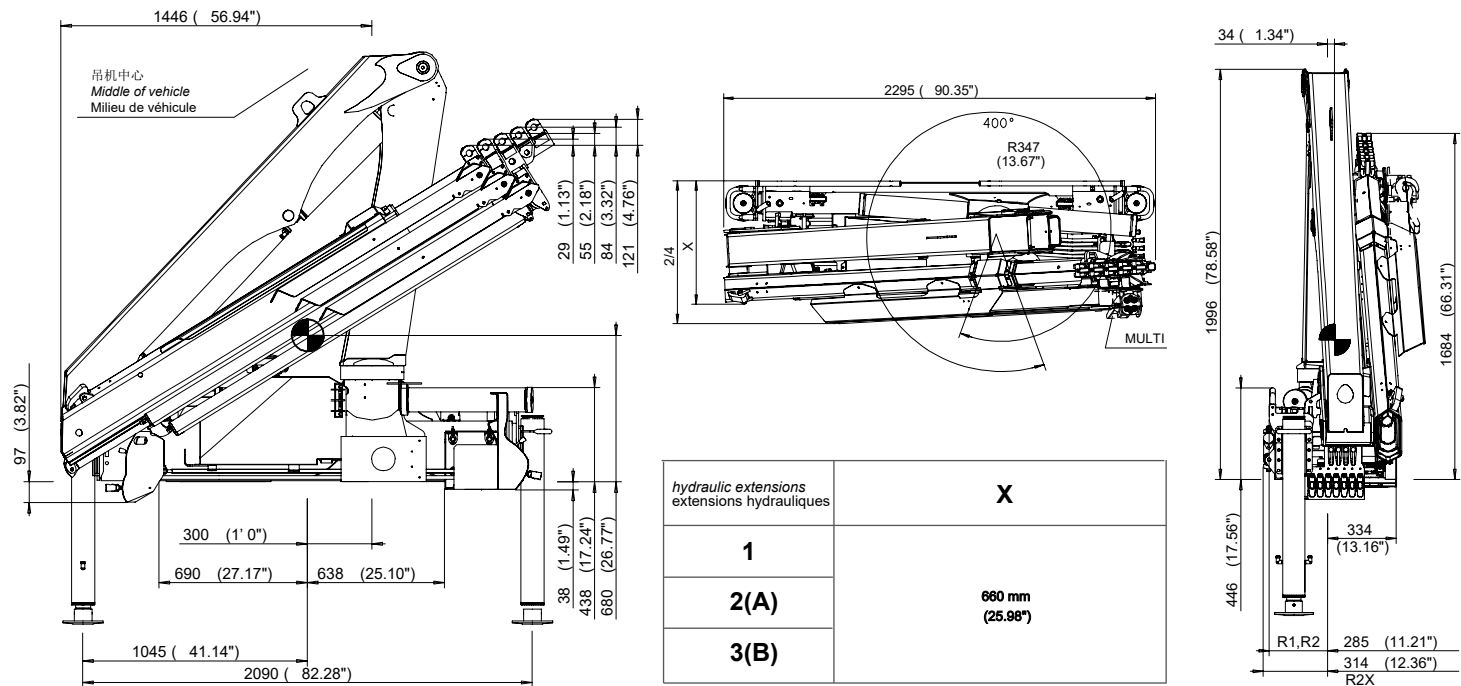
Product Description

- Equipped with load holding valves for safe crane operations
- High speed boom extension and retraction with return oil utilization
- Optimized lifting performance with the use of high tensile steel and hexagonal boom design
- Lightweight yet robust construction according to European Standards (EN 12999)
- Professional installation solutions and technical supports
- Standard package includes
  - Oil tank mounted
  - Load holding valves
  - Painting
  - High pressure filter
  - Digital hour counter
  - Load hook
  - Crane preservation
  - Mounting bolts
  - Spare parts catalogue
  - Crating

Technical Data

| Basic Data                                    | SPK 8500 |
|---|----------|
| Max. lifting moment [mt]                      | 7.6      |
| Max. lifting capacity [kg]                    | 3300     |
| Max. hydraulic outreach [m]                   | 9.6      |
| Max. hydraulic outreach lifting capacity [kg] | 720      |
| Max. number of extension boom                 | 3 (B)    |
| Slewing angle [°]                             | 400      |
| Slewing moment [mt]                           | 0.9      |
| Max. stabilizer spread [mm]                   | 4870     |
| Std. stabilizer spread [mm]                   | 4870     |
| Fitting space required [mm]                   | 660      |
| Width folded [mm]                             | 2295     |
| Max. operating pressure [bar]                 | 315      |
| Recommended pump capacity [l/min]             | 25 - 35  |
| Dead weight standard crane [kg]               | 875      |

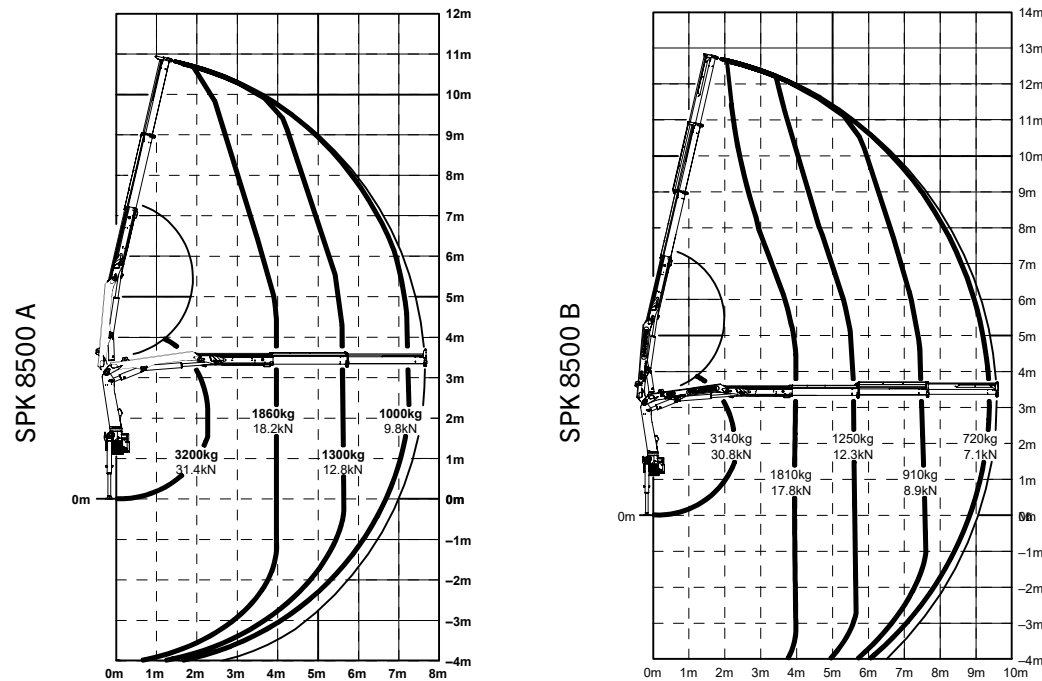
CRANE DIMENSION



Subject to change, production tolerances have to be taken into account.

FEATURES AND OPTIONS

LIFTING CHART



**Ergonomic Crane Control**

- Eronomically arranged operating levers for all crane functions
- Functional design for better comfort during crane operation
- Straightforward service and maintenance

**HD Paint**

protected

- Top quality surface paint with corrosion protection
- Long term UV-resistant coating
- Aestheically pleasing and attractive colour

**Load Holding Valve**

- Holds the cylinder in position
- Standard fittings on all cylinder
- Strategic positioned to protect from damage

**High speed extension**

- Increase extension and retraction speed of the boom system
- Crane works faster with return oil utilization
- Time saving during crane operation

**Radio Remote Control**

- Efficient control of the crane remotely
- Safe crane operation outside of the danger zone
- Easy maintenance and quick troubleshooting

**Top Seat**

- Excellent visibility of the surrounding area
- Foldable sun protection umbrella for hot weather
- Seat cover to prevent exposure from sun

**Hydraulic Overload Safety Device**

- Prevents the crane from overloading
- Overload protection system with emergency cut-off function
- Stops all movements of the crane that increases load

**Hose Equipment for Attachments**

- Additional hydraulic functions for attachments
- Simple installation with hose tray protection
- Diverse applications suitable for different industry

PALFINGER ASIA PACIFIC PTE LTD  
3 International Business Park  
Nordic European Center | #05-25/26  
609927 | Singapore  
T: +65 6591 9191  
[asia@palfinger.com](mailto:asia@palfinger.com)

Cranes shown in the leaflet are partially optional equipped and do not always correspond to the standard version. Country-specific regulations must be observed. Dimensions may vary. Subject to technical changes, errors and translation mistakes.

[WWW.SANYPALFINGER.COM](http://WWW.SANYPALFINGER.COM)