

# SPK 36080 - MH

**SANY** PALFINGER

## HEAVY LIFTING FOR 3 AXLE TRUCKS

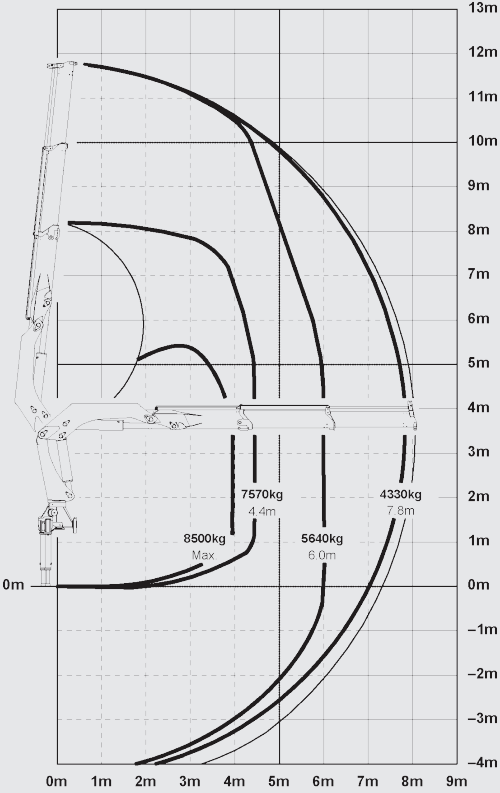


**34.8 mt**  
Max. Lifting  
Moment

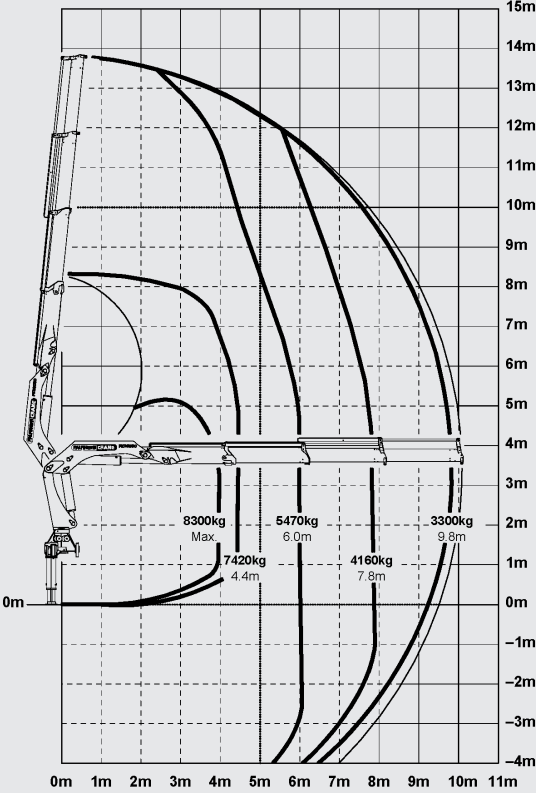
**12.1 m**  
Max.  
Outreach

# SPK 36080 - MH

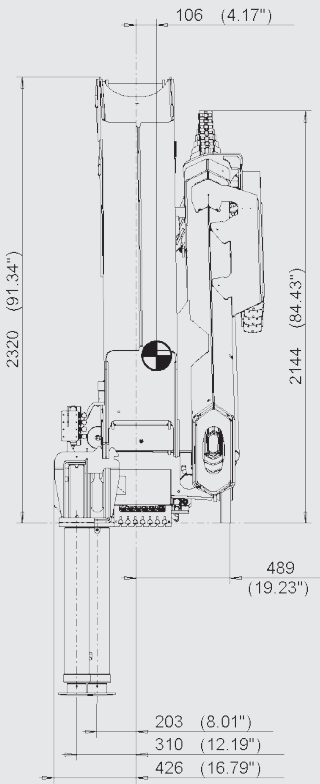
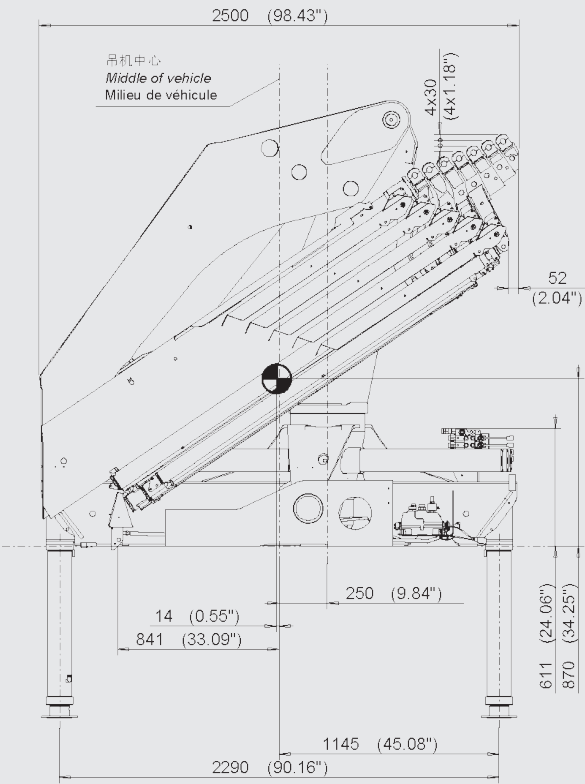
SPK 36080 (A)



SPK 36080 (B)

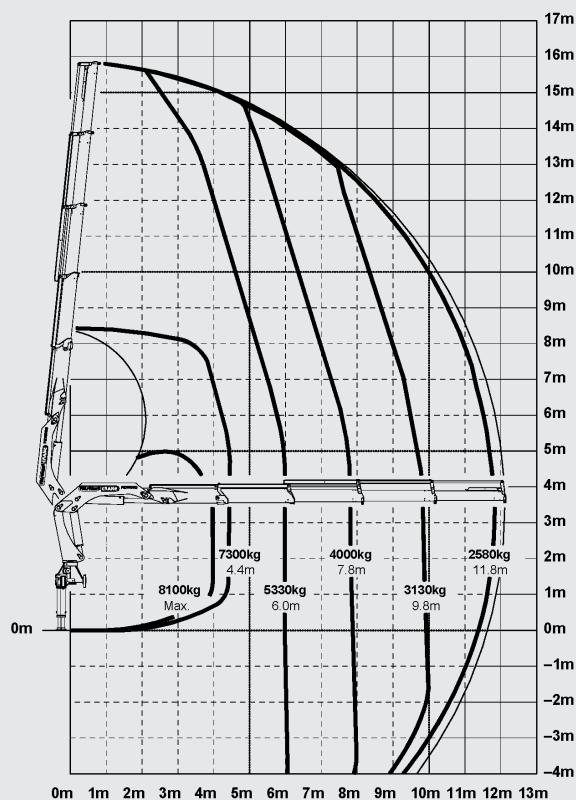


## DIMENSIONS



## SPK 36080 (C)

## TECHNICAL SPECIFICATIONS (EN 12999 H1-B3)



Max. Lifting Moment	mt	34.8
Max. Lifting Capacity	kg	8500
Max. Outreach	m	8.1 (A) / 10.1 (B) / 12.1 (C)
Slewing Angle	o	400
Slewing Torque	mt	3.8
Stabilizer Spread	m	6.0 (R3X)
Fitting Space Required (Std)	m	0.975
Width Folded	m	2.5
Operating Pressure	bar	330
Recommended Pump Capacity	l/min	55 - 80
Dead Weight (Std)	kg	3118



\* Optional features / country-specific equipment



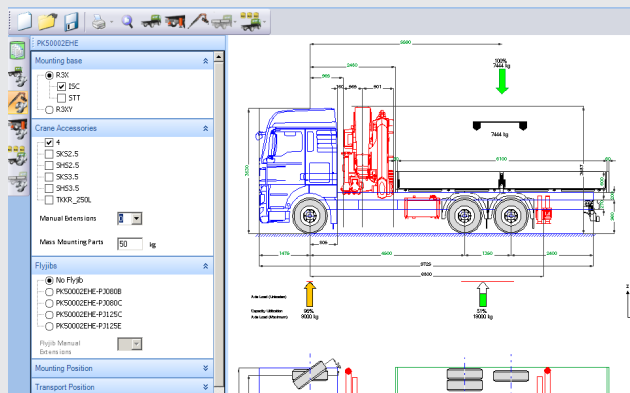
- Electronic Overload Protection (Paltronic 50) and Emergency Stop Button
- Up to 10% increased lifting capacity with High Power Lifting System (HPLS)
- High speed boom extension and retraction with Return Oil Utilization
- Optimized lifting performance with the use of high tensile steel and hexagonal boom design
- Lightweight yet robust construction according to European standards (EN 12999)
- Optional Overload Protection and Emergency Stop Button
- Professional installation solutions
- Suitable for installation on 3-axle trucks

\*

# SERVICE

## WE ARE ALWAYS HERE FOR YOU

### PROJECT ENGINEERING



The use of PALSOFT and other selected softwares allows us to address the requests of our clientele from subframe design to stability calculations, and deliver the best vehicle integration solutions.

### TECHNICAL SUPPORT



Service is PALFINGER's top priority. Your products are overseen by our highly trained and professional service department either in person or via phone and email.

### TRAINING



Here at PALFINGER, we offer a multitude of training programmes (Basic Hydraulic Course, Commissioning, etc.) to cover the needs of all our clientele. Certified trainers will conduct these programmes and training documents can be obtained after completion.

### GENUINE SPARE PARTS



Our global distributor network provides an efficient local service for all our customers. Backed by PALFINGER's expert recommendation, we ensure the optimal spare part choices for your cranes.

### Authorized Dealer:

Asia Pacific Distribution Managed By:

**PALFINGER ASIA PACIFIC PTE LTD**

3 INTERNATIONAL BUSINESS PARK | NORDIC EUROPEAN CENTRE | # 05-25/26 | 609927 | SINGAPORE | T +65 6591 9191 | F +65 6591 7737  
asia@palfinger.com | www.palfinger.com

Applications shown in the leaflet do not always correspond to the standard specifications.  
Design and specification are subject to change without prior notice. Dimensions may vary. Subject to technical changes, errors and translation mistakes.