



Crane superstructures SPC250/SPC320/SPC400



32 TONS TRUCK CRANE
BOOM 10.2-32 m



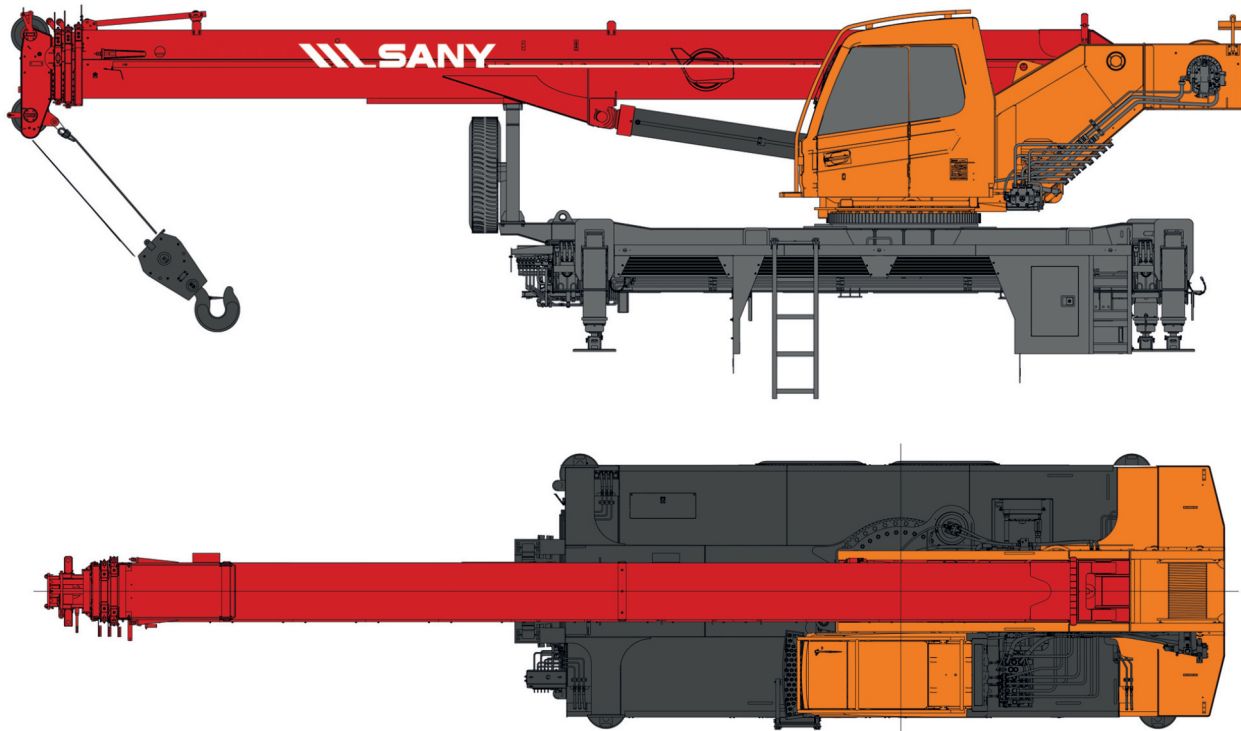
40 TONS TRUCK CRANE
BOOM 10.5-49.51 m



25 TONS TRUCK CRANE
BOOM 10.2-32 m



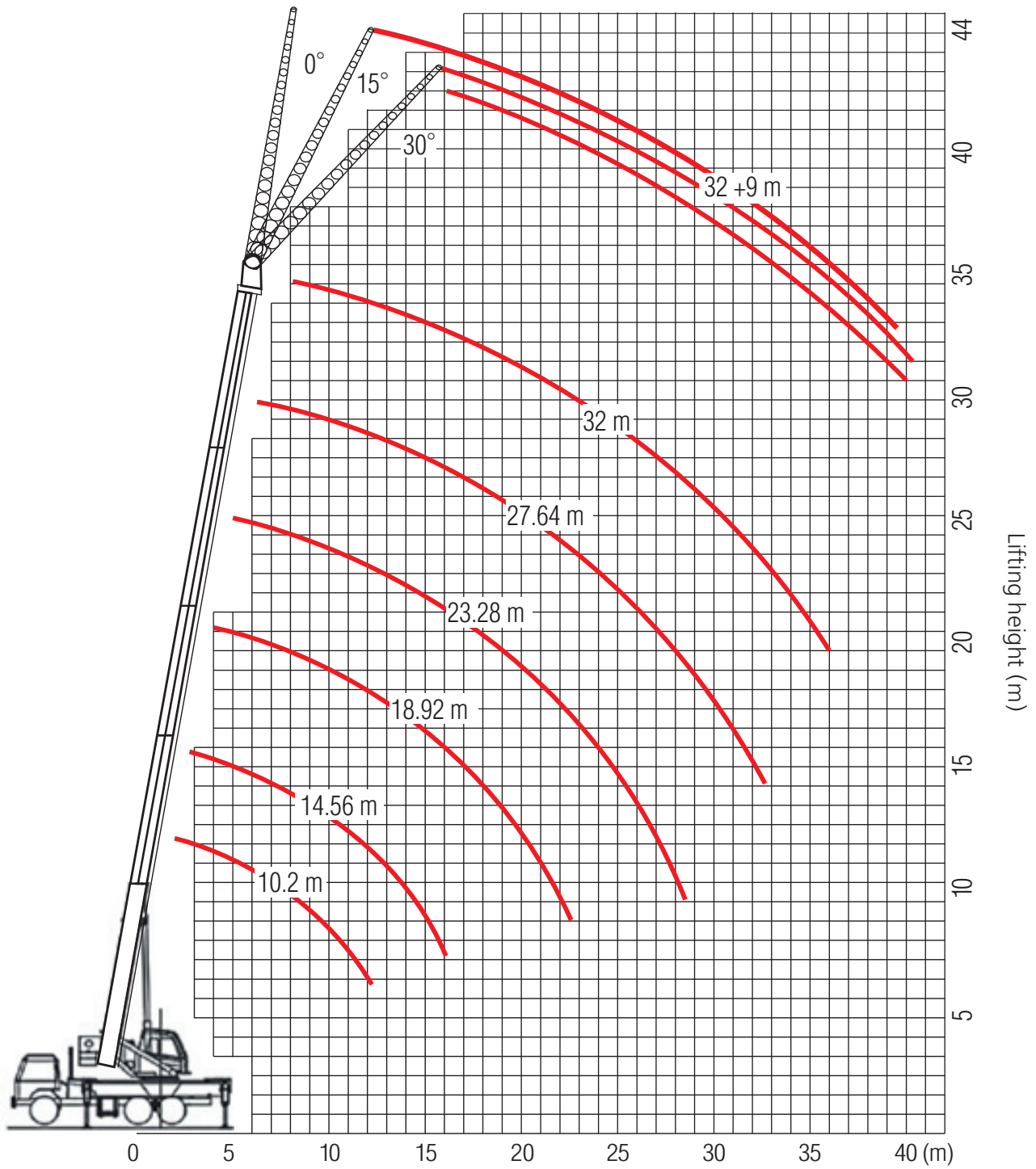
**QUALITY
CHANGES
THE WORLD**



- ▷ Max. lifting capacity 25 t
- ▷ Max. lifting moment 102.0 tm
- ▷ 4-section telescopic boom 10.2 – 32.0 m

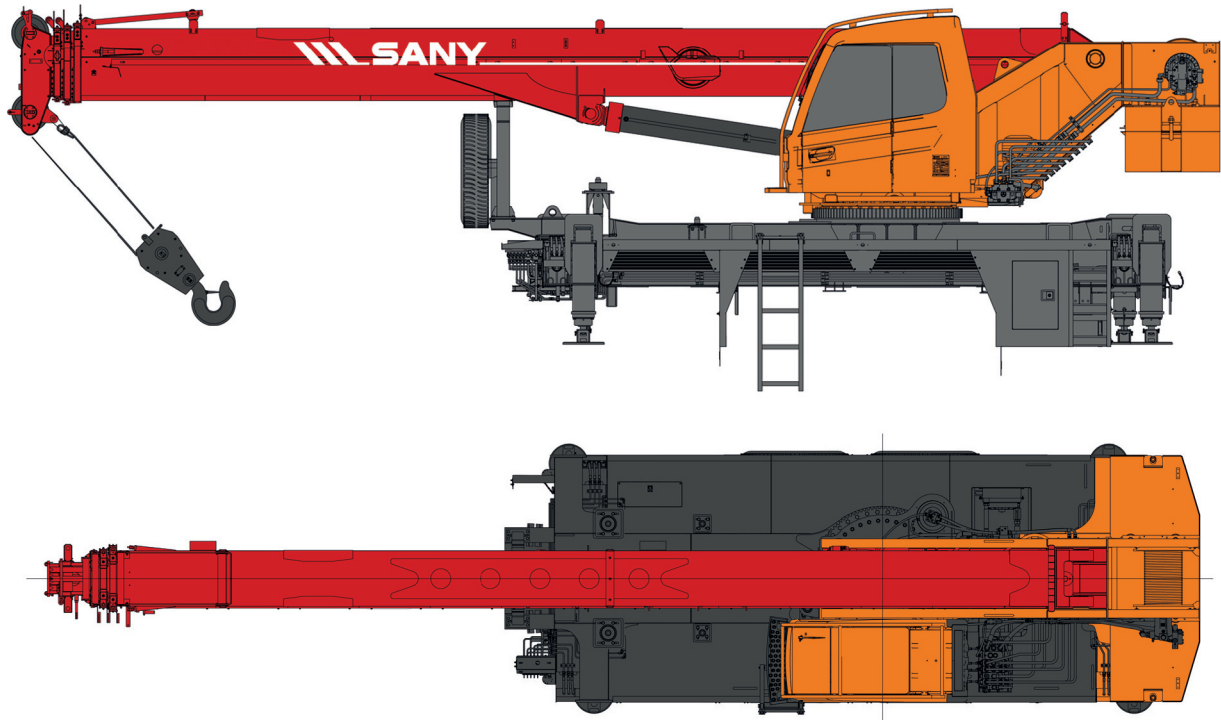
Crane Superstructure

Lifting capacity		25 t
Min. rated range		3 m
Tail slewing radius of swingtable		3.365 m
Boom section		4
Boom shape		U-shape
Max. lifting moment	Base boom	89.1 tm
Boom length	Base boom	10.2 m
	Full-extend boom	32.0 m
	Full-extend boom+jib	41.0 m
Outrigger span (Longitudinal×Lateral)		5450 X 6200 mm
Jib offset		0° 15° 30°
Max. single rope lifting speed of main winch (no load)		115 m/min
Full extension/retraction time of boom		95/60 s
Full lifting/descending time of boom		50/42 s
Slewing speed		2.0 r/min
High Voltage Detector		included

Working ranges


Working radius (m)

Radius, m	Boom length, m					
	10.2 m	14.56 m	18.92 m	23.28 m	27.64 m	32 m
3	25000					
3.5	24200	19300	14500			
4	22200	18300	14500	10200		
4.5	19800	17100	14500	10000		
5	16600	15500	13670	9700	8200	
5.5	14400	13500	12300	9300	8000	
6	12700	11900	10880	8800	7600	6700
6.5	11300	10600	9720	8200	7000	6500
7	9800	9500	8760	7400	6500	6300
8	8000	7800	7270	6600	5800	5700
9		6600	6150	5900	5200	5100
10		5700	5280	5000	4400	4300
12		4100	4020	3900	3500	3400
14			3110	3070	2800	2600
16			2450	2430	2300	2200
18				1900	1890	1700
20				1500	1460	1300
22					1130	1050
24					890	820
26						660
28						520
parts of line	8	7	6	5	4	3

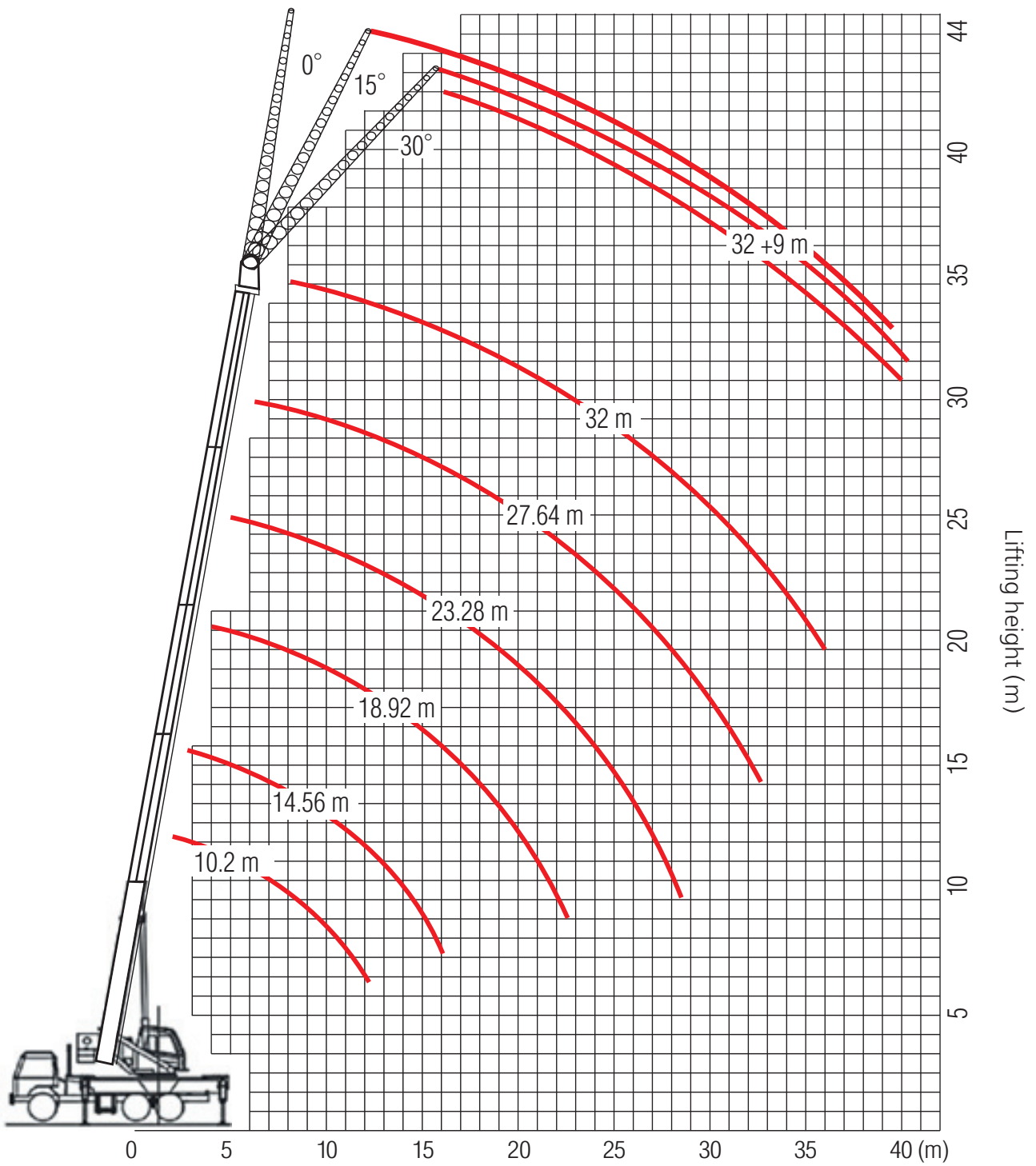


- ▷ Max. lifting capacity 32 t
- ▷ Max. lifting moment 102.0 tm
- ▷ 4-section telescopic boom 10.2 – 32.0 m

Crane Superstructure

Lifting capacity		32 t
Min. rated range		3 m
Tail slewing radius of swingtable		3750 mm
Boom section		4
Boom shape		U-shape
Max. lifting moment	Base boom	102.0 tm
Boom length	Base boom	10.2 m
	Full-extend boom	32.0 m
	Full-extend boom+jib	51.2 m
Outrigger span (Longitudinal×Lateral)		5450 X 6200 mm
Jib offset		0° 15° 30°
Max. single rope lifting speed of main winch (no load)		115 m/min
Full extension/retraction time of boom		45/35 s
Full lifting/descending time of boom		60/52 s
Slewing speed		2.2 r/min
High Voltage Detector		included

Working ranges

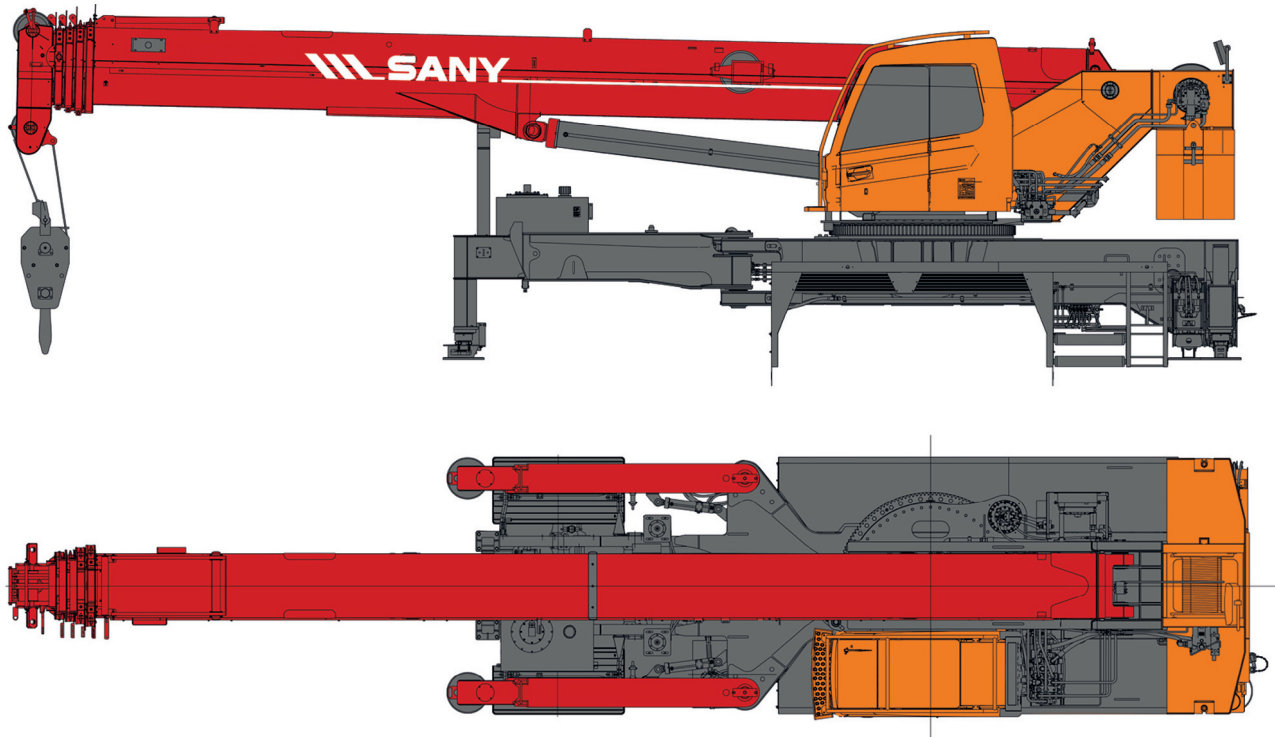


Working radius (m)

Technical characteristics

SPC320

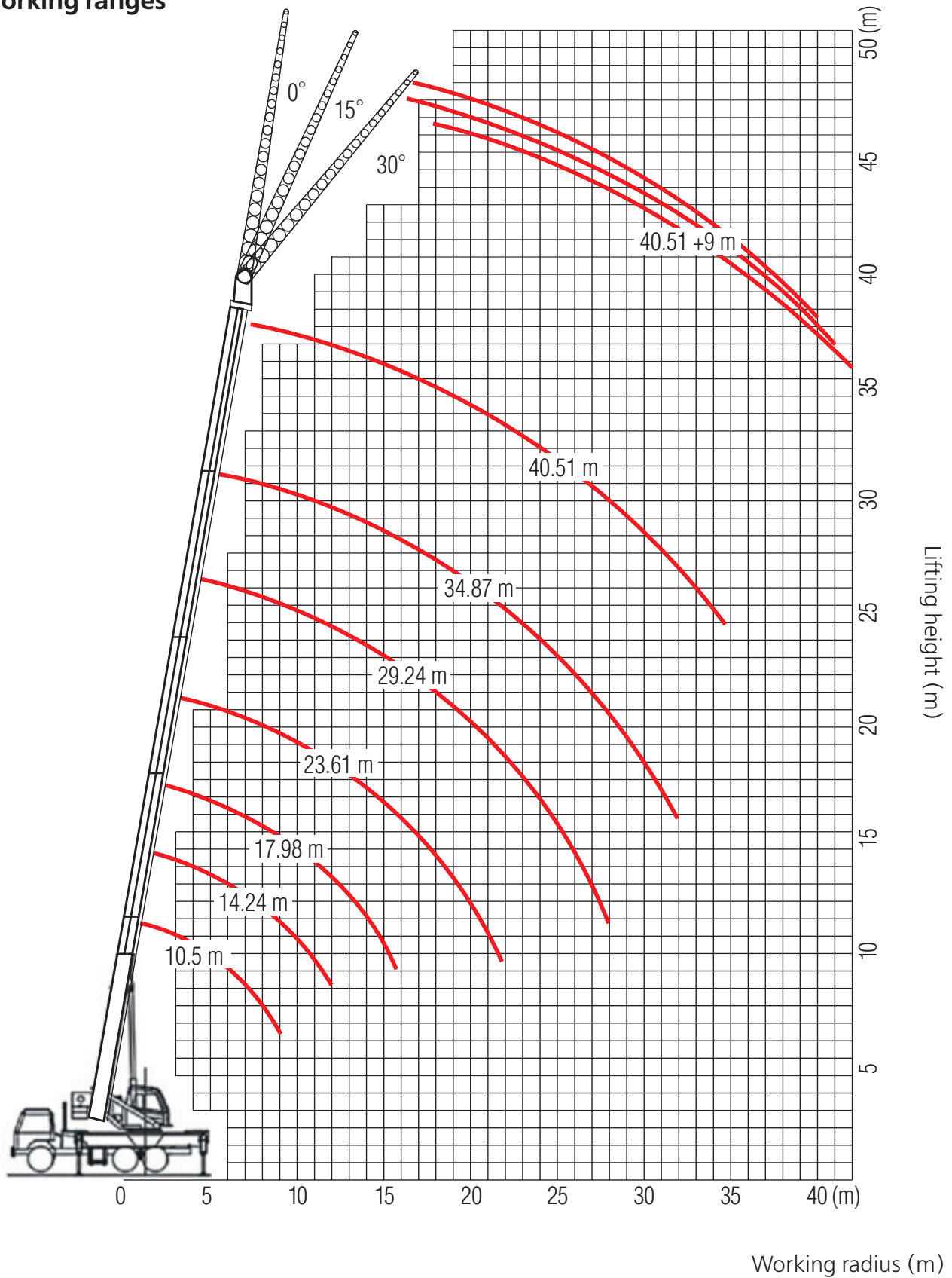
Boom length, m						
Radius, m	10.2 m	14.56 m	18.92 m	23.28 m	27.64 m	32 m
3	32000					
3.5	27400	19300	14700			
4	24600	19200	14600	11000		
4.5	22100	18600	14500	11000		
5	20400	17000	13700	10800	8600	
5.5	17900	15800	12800	10600	8400	
6	16300	14600	12100	10000	8200	6800
6.5	14100	13200	11400	9500	7900	6700
7	13000	12100	10800	8900	7600	6500
8	10600	10000	9300	7800	6700	6000
9		8500	7700	6800	6000	5400
10		7300	6600	5900	5300	4900
12		5600	4900	4500	4300	4000
14			3900	3700	3500	3300
16			3200	3000	3000	2800
18				2500	2500	2400
20				1900	2200	2100
22					1900	1800
24					1600	1500
26						1100
28						900
parts of line	8	6	5	4	3	3



- ▷ Max. lifting capacity 40 t
- ▷ Max. lifting moment 140.0 tm
- ▷ 4-section telescopic boom 10.5 – 40.5 m

Crane Superstructure

Lifting capacity		40 t
Min. rated range		3 m
Tail slewing radius of swingtable		3980 mm
Boom section		4
Boom shape		U-shape
Max. lifting moment	Base boom	140.0 tm
Boom length	Base boom	10.5 m
	Full-extend boom	40.51 m
	Full-extend boom+jib	49.51 m
Outrigger span (Longitudinal×Lateral)		7200 X 7200 mm
Jib offset		0° 15° 30°
Max. single rope lifting speed of main winch (no load)		110 m/min
Full extension/retraction time of boom		135/110 s
Full lifting/descending time of boom		70/80 s
Slewing speed		2.0 r/min
High Voltage Detector		included

Working ranges


Boom length, m							
Radius, m	10.5 m	14.24 m	17.98 m	23.61 m	29.24 m	34.87 m	40.51 m
3	40000	33000					
3.5	36000	33000	22000				
4	33000	30000	22000				
4.5	31000	28000	22000	17600			
5	28000	25000	22000	17200			
5.5	25000	23000	20500	16300	13500		
6	22000	21000	19000	16000	13000		
6.5	20000	19000	18000	15000	12500		
7	18000	17500	17000	14500	12000	11000	
7.5	16500	16000	15500	13500	11500	10500	
8	15000	15000	14500	12500	11000	10000	
9		12500	12000	11500	10000	9000	7500
10		11000	10500	10000	9500	8000	7000
11		9000	8700	8800	8700	7500	6500
12		8000	7700	8000	7600	6500	6000
14			5700	6400	6300	6200	5500
16			3500	5000	5000	5000	5000
18				3900	4200	4200	4200
20				3100	3400	3400	3400
22					2800	2900	2900
24					2200	2300	2400
26					1700	1900	2000
28						1600	1700
30						1250	1400
32						1000	1100
34							900
parts of line	8	6	5	4	3	3	3



SANY GROUP CRANE BU

SANY Mobile Crane Industrial Park, No.168 Jinzhou Avenue, Jinzhou Development Zone, Changsha City,
Hunan Province, P.R. China Zip 410600
Consulting sanycrane@sanygroup.com (Crane BU) / crd@sany.com.cn (IHQ)
After-sales Service 0086-400 6098 318

Reminder:
Any change in the technical parameters and configuration due to product modification or upgrade may occur without prior notice.
The machine in the picture may include additional equipment. This brochure is for reference only, and goods in kind shall prevail.
Copyright at SANY. No part of this brochure may be copied or used for any purpose without written approval from SANY.

© Edited in August 2022

