



Quality Changes The World

SLT260(T5531-18)

SANY Tower Crane
三一重工塔式起重机

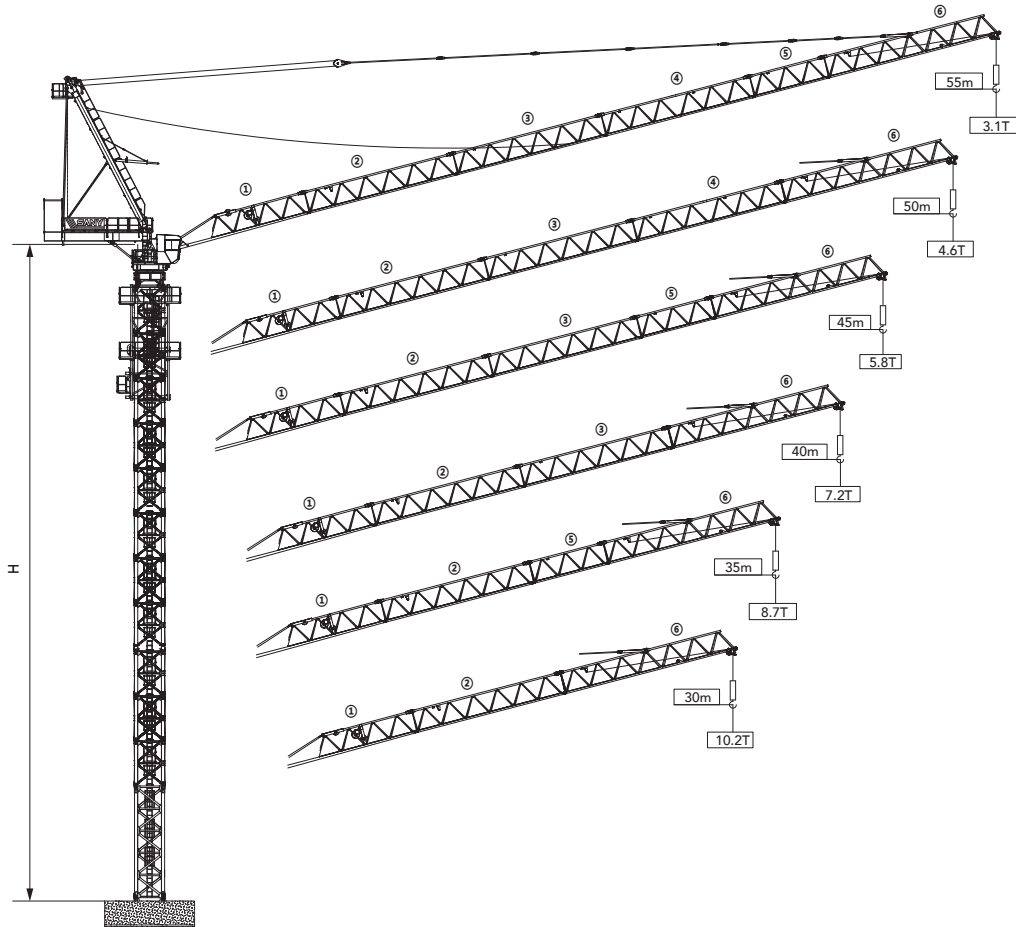


**Better World
Better SANY Crane**

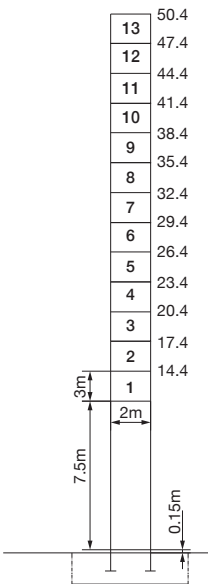
SANY CRANE



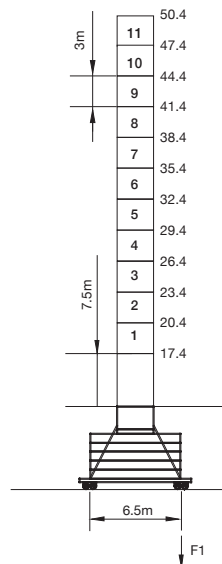
Jib Length & Tip Load 臂长组合及吊重 (2.0×2.0×3.0)



Masts 塔身 (2.0×2.0×3.0)

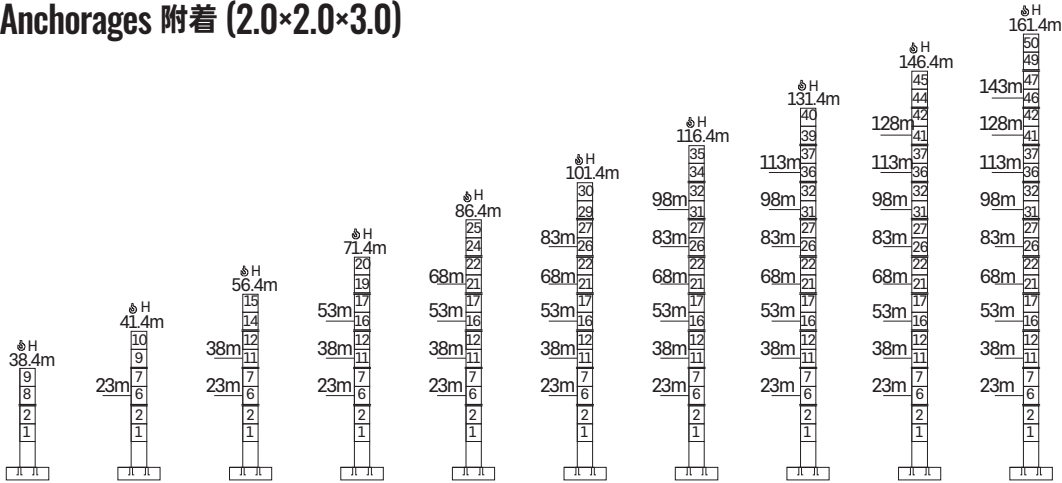


Jib length (m) 臂长	H(m)
30m	50.4
35m	47.4
40m	47.4
45m	44.4
50m	41.4
55m	38.4



Jib length (m) 臂长	H(m)
30m	50.4
35m	47.4
40m	47.4
45m	44.4
50m	41.4
55m	38.4





Anchorage 附着 (2.0×2.0×3.0)



Load Diagrams 起重特性表







radius/m 幅度 (m)	the max. capacity/t 最大起重量	15	20	25	30	35	40	45	50	55	
55	⌋	5-27.9m/9t	9.00	9.00	9.00	8.12	6.54	5.36	4.44	3.70	3.10
	⌋⌋	5-20.4m/13.5t	13.50	13.50	10.45	8.14	6.50	5.26	4.30	3.53	2.90
50	⌋	4.6-31.9m/9t	9.00	9.00	9.00	9.00	7.92	6.54	5.46	4.60	
	⌋⌋	4.6-22.6m/13.5t	13.50	13.50	11.91	9.34	7.50	6.13	5.05	4.20	
	⌋⌋⌋	4.6-17.9m/18t	18.00	15.76	11.91	9.34	7.50	6.13	5.05	4.20	
45	⌋	4.2-32.8m/9t	9.00	9.00	9.00	9.00	8.28	6.88	5.80		
	⌋⌋	4.2-23.2m/13.5t	13.50	13.50	12.30	9.71	7.86	6.48	5.40		
	⌋⌋⌋	4.2-18.2m/18t	18.00	16.19	12.30	9.71	7.86	6.48	5.40		
40	⌋	3.7-33.7m/9t	9.00	9.00	9.00	9.00	8.60	7.20			
	⌋⌋	3.7-23.7m/13.5t	13.50	13.50	12.64	10.04	8.19	6.80			
	⌋⌋⌋	3.7-18.5m/18t	18.00	16.54	12.64	10.04	8.19	6.80			
35	⌋	3.3-34m/9t	9.00	9.00	9.00	9.00	8.70				
	⌋⌋	3.3-23.8m/13.5t	13.50	13.50	12.70	10.13	8.30				
	⌋⌋⌋	3.3-18.6m/18t	18.00	16.55	12.70	10.13	8.30				
30	⌋	2.8-30m/9t	9.00	9.00	9.00	9.00					
	⌋⌋	2.8-23.9m/13.5t	13.50	13.50	12.77	10.20					
	⌋⌋⌋	2.8-18.7m/18t	18.00	16.63	12.77	10.20					

Transmission Mechanisms 传动机构

Transmission 传动	Legend 图例	Model 型号	Power 功率	velocity 速度
Slewing 回转		SHJ120A7.5TP SHJ120A7.5TPF	2 × 11kW	0-0.8r/min
Luffing 变幅		OKLBW16A	55kW	≤2.2min
Hoisting 起升		OKQSW180B	67kW	0-153m/min
Voltage 电源电压		380V(± 10%)	Power frequency 电源频率	50Hz

Note: Contact with us when the rope capacity of hoisting mechanism is larger than 500m.
注：工作容绳量大于 500m 时请与厂家联系

Counter-jib Ballast 平衡臂及平衡重组合表

 (m)	 (kg)	 5000kg (blocks)	 5000kg (blocks)	 2000kg (blocks)	 (kg)
55	2650	1	4	1	27000
50	3050	1	4	0	25000
45	3650	1	4	0	25000
40	4250	1	4	0	25000
35	5000	1	3	1	22000
30	5800	1	3	1	22000

Packing List 运输部件 (2.0×2.0×3.0)

NO. 序号	Description 名称	Sketch 形状	L(m) 长	B(m) 宽	H(m) 高	Weight per unit (t) 单件重量 (t)	Quantity 数量
1	Jib section I 臂架 I		10.56	1.76	1.86	1.61	1
2	Jib section II 臂架 II		10.51	1.73	1.7	1.21	1
3	Jib section III 臂架 III		10.51	1.73	1.7	1.07	1
4	Jib section IV 臂架 IV		10.51	1.73	1.7	1.03	1
5	Jib section V 臂架 V		5.34	1.73	1.7	0.57	1
6	Jib section VI 臂架 VI		10.57	1.73	2.61	1.59	1
7	A Bracket A 架		11.95	1.85	1.26	4.05	1
8	Counter jib 平衡臂		8.33	3.7	3.64	6.25	1
9	Pulley block 滑轮组		1.77	1.43	0.78	1.1	1
10	Hook 吊钩		1.2	0.41	2.43	0.68	1
11	Basic section 基础节		7.81	2.1	2.11	5.39	1
12	Standard mast 标准节		3.53	2.21	0.7	1.78	9
13	Luffing assembly 变幅机构总成		2.61	1.73	1.49	3.66	1
14	Hoisting mechanism 起升机构总成		1.97	1.95	1.27	3.33	1
15	Telescoping cage 爬升架		7.67	2.79	2.62	5.07	1
16	Cabin 司机室		2.37	1.33	2.2	0.69	1
17	Strut bar component 平衡臂撑杆总成		2.52	0.81	1.84	0.61	1
18	Lampstand assembly 三角架总成		2.12	1.76	1.67	1.31	1
19	Upper bearer frame 上支座总成		2.91	1.73	4.7	4.27	1
20	Lower bearer frame 下支座总成		2.26	0.97	2.26	3.22	1



SANY GROUP CRANE BU

SANY Tower Crane Industrial Park, No.168 Jinzhou Avenue, Jinzhou Development Zone, Changsha City, Hunan Province, P.R. China Zip 410600
Consulting sanycrane@sanygroup.com (Crane BU) / crd@sany.com.cn (IHQ)
After-sales Service 0086-400 6098 318

Reminder:

Any change in the technical parameters and configuration due to product modification or upgrade may occur without prior notice. The machine in the picture may include additional equipment. This brochure is for reference only, and goods in kind shall prevail.

Copyright at SANY. No part of this brochure may be copied or used for any purpose without written approval from SANY.

© Edited in November 2022

三一集团起重事业部

中国湖南长沙金洲开发区金洲大道 168 号 三一塔式起重机产业园 邮编: 410600
咨询: sanycrane@sanygroup.com (起重事业部) / crd@sany.com.cn (国际总部)
海外售后服务: 0086-400 6098 318

温馨提示:

由于技术不断更新, 技术参数及配置如有更改, 恕不另行通知。图中机器可能包括附加设备, 本画册仅供参考, 以实物为准。
版权为三一所有, 未经三一书面许可, 本画册任何内容不得被复制用于任何目的。

© 2022 年 11 月版

