



# SCC20000A

## SANY Crawler Crane

### 2000 Tons Lifting Capacity

Quality Changes the World



**Max. lifting moment: 28000t · m**  
**Max. boom length: 156m**  
**Max. boom+jib combination: 108m+108m**

The parameters, pictures and standard/optional equipment are only for reference in this brochure, the actual machine is based on the effective price list and contract.



## Crawler Crane Series SCC20000A

P03

Main  
Characteristics

- Product specifications
- Safety device

P10

Technical  
Parameters

- Main performance parameters
- Basic dimensions of overall crane
- Transportation dimensions

P22

Configurations

- Configurations Combination
- HDB Configuration
- HJDB Configuration
- FJhDB Configuration
- LJDB Configuration



**SCC20000A**  
**SANY CRAWLER CRANE**  
**2000 TONS LIFTING CAPACITY**

QUALITY CHANGES THE WORLD

## Main Characteristics

- Page 04 Product specifications
- Page 08 Safety device



## Product Specification



### Module Design

- Module design of transport unit can ensure the good combination of the mechanical system, electronic system and hydraulic system, realizing quick connection between modules.

### High-strengthened Steel Plates

- The high-strengthened steel plates is adopted for main structure welded and the pendant bars, so the transport weight of single piece is well controlled and cross-section of pendant bar reduced.

### Power Unit in Standard Container

- All power system, control system, hydraulic system and cab are laid compactly, in a standard container, so the maintenance and transport are convenient and easier.

### The Generator Unit

- The generator unit of 220V can provide power for the air conditioner in the cab and the whole illumination system.

### Safe Control System

- The work model and assembly model are easy and reliable. The in-time bearing pressure display, level indicator, function lock, emergency electrical control, lightning protection, auto-travel-aligning, closed-circuit monitor and other safe and control systems are all fitted to ensure safety.

### New Materials

- The aluminum alloy is used for walk pedals on the booms and rotating bed, so the boom weight is reduced and larger loading capacity possible.

### New Technology

- The traditional lifting cylinder for superlift counterweight is replaced by accurate calculation. The utilization rate of superlift counterweight is also achievable before leaving the ground.

### Large Lifting Capacity

- The max. lifting capacity is 2000t, max. lifting moment 26700t-m, longest boom 156m, max. luffing jib combination 108m+108m.

### Convenient Maintenance

- The time for access to the part to be adjusted is no longer than 10 min/person. That for the part needing daily maintenance is no longer than 30 min/person. That for the part needing service is no longer than 2 hours/person. And the remote monitoring system helps to make the maintenance and management easier.

### Travel With 100% Load

- Four-wheel drive with powerful traction force brings steady travel, showing the very advantages of the crawler crane.

### Wireless Control Device

- The wireless remote control is achievable for assembly of carbody transverse beam, crawlers and rotating bed.



## Product Specification

### Engine

- Cummins Engine QST30-Tier2, 12 cylinder, water cooling, turbo charge.
- Rated power: 746Kw.
- Rated engine speed: 1800rpm.
- Max. output torque: 4629N·m.
- Speed at the maximum output torque: 1300rpm.
- A diesel of 2000L tank is offered.

### Electric System

- Crawler cranes of SCC series adopt integrated control system of distributed bus communication.
- The advantages: ① CAN transmission is the most suitable bus for engineering machinery. ② The distributed arrangement + integrated control simplify the whole circuit and enhance reliability. ③ A number of CAN smart nodes make the whole system more advanced.

### Hydraulic System

- Hydraulic system includes load hoist hydraulic system, traveling hydraulic system, slewing hydraulic system, boom/jib luffing hydraulic system, servo hydraulic system, back-stop hydraulic system, cooling system, auxiliary hydraulic system. The main hydraulic components are of star brand.
- Characteristics: The main system adopt closed circuit, featured by energy saving, high efficiency, quick response, low heat radiation and long service life. The electrical proportional control.
- Components is widely adopted to facilitate the accurate and intelligent control. The hydraulic system is also fitted with pressure warning and filter clogging warning, improving the reliability. The electric system can automatically respond in time to circuit explosion. And additionally, the explosion relief valves are fitted in the hydraulic pipe to eliminate the damage, enhancing the safety.

### Slewing System

- Slewing part: Driven by four motor gearbox.
- Slewing speed: 0~0.82r/min.
- Features: Steady slewing, free slipping function and 360° rotation.
- Slewing bearing mechanism imported from Italy: three-row roller bearing.

### Main/aux. Load Hoist Mechanism

- The planetary gear box driven by hydraulic motor of variable displacement is used to control the main and aux. load hoist, to lift and lower the load. The rope speed of hoisting winch can

be steplessly adjusted from 0-121 m/min, with good inching performance. The quick promote of power can be realized at high speed. The wire rope is from famous brand. The multilayer winding of rope-folding drum ensures no rope disorder. The enclosed gear box is featured by low noise, high efficiency, and long service life.

Main load hoist winches	Drum diameter	870mm
	Rope speed of the outmost layer	0~121m/min
	Diameter of wire rope	40mm
	Rope length	1800m
	Rated single line pull	36.7t
Main load hoist winches	Drum diameter	870mm
	Rope speed of the outmost layer	0~76.6m/min
	Diameter of wire rope	40mm
	Rope length	770m
	Rated single line pull	36.7t

### Boom Hoist Winch Mechanism

- Components: Boom luffing mechanism, jib luffing mechanism, superlift luffing mechanism.
- The fold-line drums of winches, concealed reducer and closed circuit are adopted. The power supply is switched by directional control valve, realizing a number of compound actions and stepless speed adjustment, with good inching performance. Hydraulic control normally closed pawl locking device is equipped.

Boom hoisting mechanism	Drum diameter	830mm
	Rope speed of the outmost layer	0~58.3m/min
	Diameter of wire rope	40mm
	Rope length	410m*2
	Rated single line pull	36.7t
Jib luffing mechanism	Drum diameter	870mm
	Rope speed of the outmost layer	0~85.2m/min
	Diameter of wire rope	40mm
	Rope length	1100m
	Rated single line pull	36.7t
Superlift luffing mechanism	Drum diameter	870mm
	Rope speed of the outmost layer	0~98.1m/min
	Diameter of wire rope	40mm
	Rope length	1570m
	Rated single line pull	36.7t

## Product Specification



### Counterweight

- Carbody counterweight: Total weight: 80t, counterweight block×8, counterweight tray×2.
- Rear counterweight: Total weight: 280t, counterweight block×26, counterweight tray×2.
- Superlift counterweight: Total weight: 810t, counterweight block×79, counterweight tray×1.

### Cab

- The cab is located at the front part of the power system container. It is featured by fully-enclosed steel frame structure, large area of toughened glass window at front and sides, and the GE panel at top, making the cab brightened, strengthened and hard-wearing. The noise inside is lower than 85dB. And the interior control device, detecting instruments, fire alarming device and closed circuit are all the ergonomically designed and arranged.

### Control System

- The LML display, closed circuit monitor, monitoring screen and dashboards are all directly visible to the operator. The LML detects the lifting moments and other parameters. The monitor screen displays the crane's operation and the alarming data from the monitoring cameras. Inside the right and left armrest boxes are three control levers and their control functions switched over by monitoring keys. The simple actions and compound actions are displayed by words and pictures.

### Alarming

- Once a failure appear, all alarming data such as wind speed, water temperature, oil and fuel temperature, oil pressure and volume, working hours and engine speed will bounce up on the display.

### Floating Superlift Counterweight

- In specific working conditions, the crane can travel with superlift counterweight when unloaded, saving time of superlift assembly and disassembly to realize a quick job site transit.

### Travel Drive

- Two stages of speed is available. With powerful traction force, the crane can travel with 100% load. Each travel device can be independently driven and flexibly move forward and backward, and turn in pivot.

### Travel Brake

- The normally-applied travel brake is fixed in the gear box (The brake keeps workable before travel lever moved). And the brake is self-compensating, needing no adjusting. When the levers is operated, the brake release, and the travel system start to work.

### Track Pad

- The track pads are 2000mm wide, and the total is 160pcs×2. The tension can be adjusted through hydraulic adjusting cylinder fixed in the crawler travel device, or through inserting spacer between crawler frame and the track adjusting cylinder.

### Transverse Beam

- Welded structure of high-strengthened steel, the transverse beam is connected to crawler frame and carbody by power pins of hydraulic cylinder, enabling easy assembly & disassembly.

### Carbody and Adapter

- The carbody and adapter are connected through bolts, improving the swing bearing connection. The adapter is connected with the rotating bed through power pins, the high-strengthened welded structure and transverse beam by power pin of hydraulic cylinder, easy for assembly and disassembly.

### Rotating Bed

- It includes the front and the rear part, connected by power pin, independently transportable. The rear can be transported together with A frame, boom hoisting mechanism as a whole, cutting the time for the rope assembly& disassembly.

### Travel Speed

- The variable displacement motor can realize two stages of speed. The speed can be steeplessly adjusted within the stage, high speed 0~1.02Km/h, low speed 0~0.52Km/h, ensuring steady travel.

## Product Specification



### Operation Equipment

- The operating equipment is made of high-strength steel tubes and high-strength steel plates, and the rolled welded pulleys are adopted on the boom head and hook.

### Boom

- The boom is a spatial lattice structure of welded tubes with equal section areas of inserts and tapered sections for two ends. The boom top and root are strengthened with steel plates, which is easier for load transfer.
- The boom length is 54m (basic boom) to 108m.
- Compositions: Boom base 10m, insert 6m×2, insert 12m(45)×2, insert 12m(40)×1, insert 12m(36)×2, insert 12m(30)×1, transitional section of boom 12m, 2000t boom tip 2m.

### Luffing Jib

- The luffing jib is a spatial lattice structure of welded tubes with equal section areas of inserts and tapered sections for two ends. The jib top and root are strengthened with steel plates, which is easier for load transfer.
- The basic jib is 36m (boom base 10m, insert 12m(20), insert 6m(20)×2, 1600t jib tip 2m), insert 12m (17.5)×1, insert 12m(12.5)×4. The usable luffing jib is 36m~108m, and can be installed to the boom of 54m~108m.
- The jib luffing is realized by the front mast and rear mast. The mast is a lattice structure of welded tubes with equal section areas of insert and tapered section for two ends. The front mast is 26.5m and rear mast 25.5m.

### Hook

- Standard offers: 100t hook, 400t hook and 2000t hook.
- The 2000t hook can be decomposed into a 1000t hook, and 1000t further to a 500t hook.

### Superlift Mast

- The superlift mast is a spatial lattice structure of welded tubes with equal section areas of inserts and tapered sections for two ends. The mast base and top are strengthened with steel plates, which is easier for load transfer.
- The length of the superlift mast is 50m.
- Compositions: Superlift base 9m×1, insert 12m×2, insert 8m×1, top 9m.

### Hook Latch

- Each lifting hook is installed with a baffle plate to prevent wire rope from falling off.

### Configurations

- HDB: Boom+ superlift mast+ superlift counterweight (0 counterweight allowable).
- HJDB: Mixed boom+ superlift mast+ superlift counterweight (0 counterweight allowable).
- LJDB: Boom + Luffing jib +superlift mast+ superlift counterweight (0 counterweight allowable),
- FJhDB: Boom+Fixed jib + superlift mast+ superlift counterweight (0 counterweight allowable).

Note: The equipment above are for full configuration, and the actual configuration shall be subject to the purchase order.

## Safety Devices



### Monitor

- To display the parameters, such as wind speed and gradient.
- To set system parameters.

### A Module

- To receive the input signals from cab and transmit to the controllers via CAN Bus.
- To send out command to controller keys, such as the alarming lights and buzzers.

### Control Panel

- Fitted with components, such as select switches, electrical ignition controller, emergency switch and hand throttle.
- Main function: To send major orders for crane operation.

### RC Controller

- It works as the brain to deal with all dates.

### B Module

- To receive then send out controller's order to control the solenoid valve.
- To receive all input signals and transmit to the controller by CAN Bus.

### Brake of Hoist Mechanism

- All hoisting brakes are spring loaded normally closed disc brakes, which are featured with large braking force, maintenance-free, safe and reliable use, and long service life.

### Date Recorder

- To record major parameters and dates of the crane and keep for ten years at most.

### Engine ECU

- To control the engine throttle volume and detect the data, working as the engine's brain.

### Regulation of Engine Power Ultimate Load and Stalling Protection

- The controller can monitor the engine power so as to prevent stalling.

### Engine Monitoring Dashboard

- To display the water temperature, fuel consumption, working hours, engine oil pressure, engine speed, accumulation charge, and voltage.

### Electronic Level Indicator

- It displays the tilting angle of the crane on the monitor in real time.

### Pharos

- It is mounted on the top of the boom/jib and alerts in air during night.

### Anemometer

- It is mounted on the top of the boom/jib to monitor the wind speed in real time and display relative data on the monitor.

### Over-hoist Protection of the Main and Auxiliary Hooks

- It is used to prevent the over-hoist of the hook to protect the boom and sheave blocks.

### Load Moment Indicator

- As a safe device, it is used to limit the forward tilting moment of the crane and show the data.

### Over-release Protection Device of the Main and Auxiliary Hook

- When the wire rope is released to the last three wraps, the limit switch will start working, and the releasing of rope will be automatically stopped by the control system. Meanwhile, the display and the buzzer will give alarms.

### Assembly Mode/Work Mode Switch

- In assembly mode, certain safety devices are disabled to facilitate crane assembly.
- In work mode, all safety devices activate to protect the operation.

### Boom Angle Limiter Mechanism

- When the elevation angle of the boom exceeds 88°, or jib angle exceeds 75°, corresponding limit switch will be triggered, and the control system will automatically cut off the boom hoisting. Meanwhile, the display and the buzzer will give alarm.



## Safety Devices



### Back-stop Device

- The boom and the superlift mast are respectively equipped with a pair of back-stop cylinders. The high pressure of the cylinder shall be overcome when the boom tilts backwards, and high pressure oil will be supplemented automatically when the boom swings forwards to increase the tension and prevent the boom vibration and shaking back.
- The jib rear mast is equipped with a pair of back-stop cylinders, while the jib front mast is equipped with a pair of pneumatic cylinders to prevent the mast from the backward inclination and tension of the jib luffing wire rope.
- The jib is also equipped with back-stop device.

### Closed Circuit Monitoring System

- Containing a total of 8 cameras, it can be used to monitor the winding conditions of wire ropes of each hoisting mechanism, the conditions of superlift weight, and conditions around the equipment.

### Failure Auto-diagnosis System

- Failure code can help troubleshooting easily.

### Black Box

- It is able to record the operation data and machine movement, and analyze the remaining running conditions and service life of machine based on the actual performance.

### Lightning Protection Device

- It includes the lightning protection device and the surge protection device, which can effectively protect the electric system elements and workers from lightning.

### Swing and Travel Visual-audio Alarm

- When the machine is swinging or traveling, the horn will send out alarm per certain frequency, and warning indicator light flashes, to warn the people around the machine. This can be turned off in the control system.

### Operation Release

- If operation release key pressed, all the other handles won't work, which prevents any mis-operation caused by accidental collision.

### Emergency Operation System

- The independent circuit emergency operation box, connected to solenoid valve via connectors, is obtainable for crane's main operations such as load hoisting, luffing and swing.

### Remote Monitoring System

- It monitors and analyzes the operation data so as to realize remote diagnosis of faults and timely solution.

### Emergency Stop Key

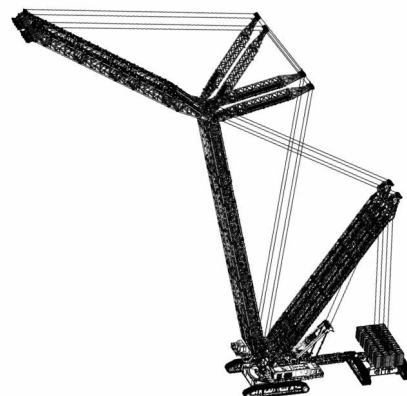
- If the crane is suddenly out of control, press the emergency stop key, the hoisting, luffing and swing and travel all brake, and the engine stop working.

### Product Features in the Industry

- High configuration: The major electric components are all exported from famous brand, such as Rexroth, Gessman and P+F.
- Intelligence: The CAN node adopted can enhance the self-diagnosing ability for easy maintenance.
- Energy-saving: Energy-saving technology of the engine to low down the fuel consumption and operation cost.
- High safety: The crane is equipped with LML, all limiter switch, GPS location and other safety-controlling system to ensure safe operation.

### Advantages

- 1: The data recorder will provide support for failure detection and service life analysis.
- 2: The customer's specialized demands can be met timely.
- 3: The monitoring function with recording time of 120h and more, can play back the real operation condition.
- 4: Electrical control levers are featured by shaking function during operation, so the operator can be aware of the speeds situation.
- 5: The boom area limiter promoted greatly the control safety and flexibility.
- 6: Further reach on energy saving technology will cut more cost and give better support to the regular customers in the technology upgrade.
- 7: Two SCC2000A can be combined and work as a 3000t tonnage crawler crane. (Pictured below).





**SCC20000A**  
**SANY CRAWLER CRANE**  
**2000 TONS LIFTING CAPACITY**

QUALITY CHANGES THE WORLD

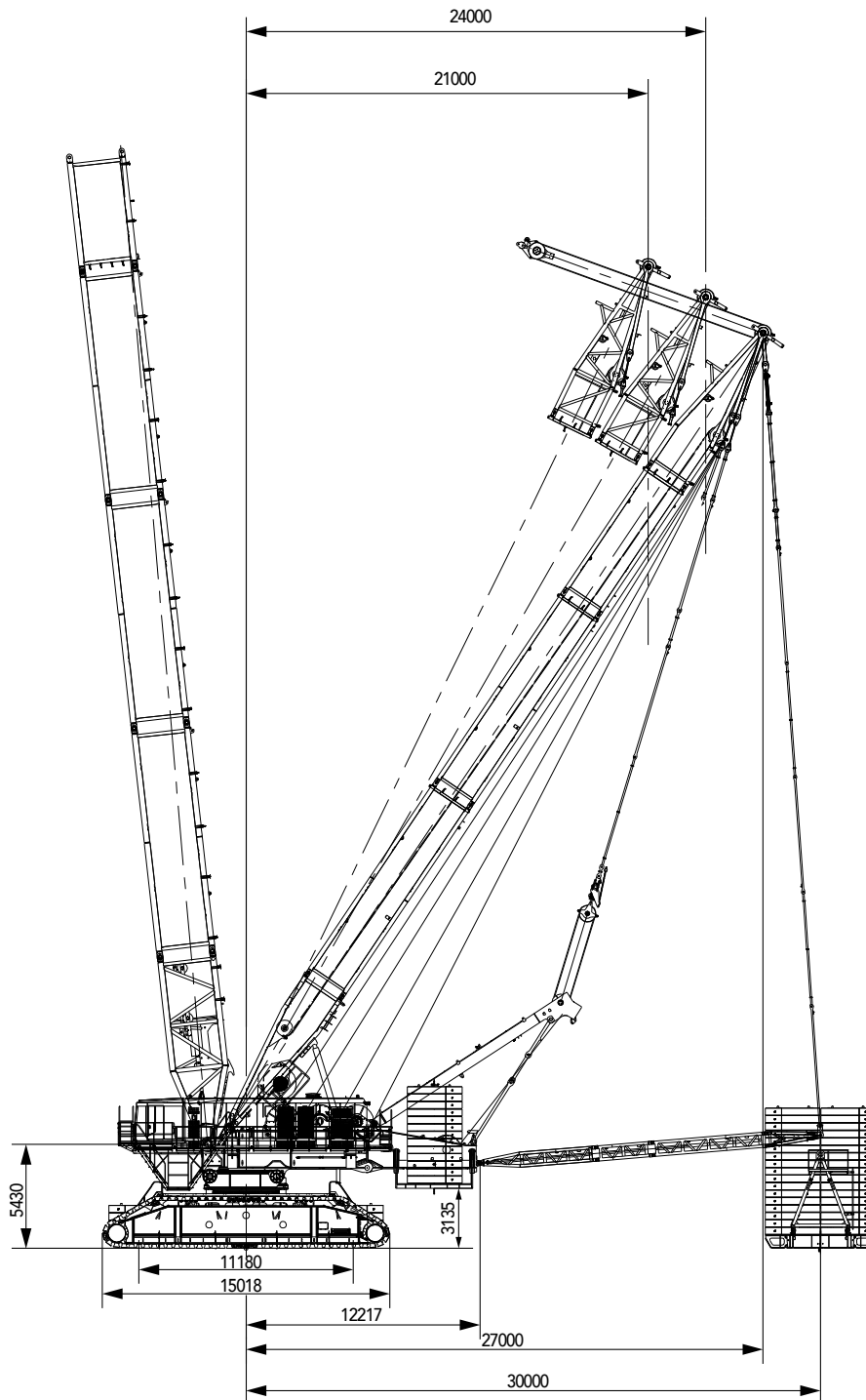
## Technical Parameters

- Page 11 Main performance parameters
- Page 12 Basic dimensions of overall crane
- Page 14 Transportation dimensions

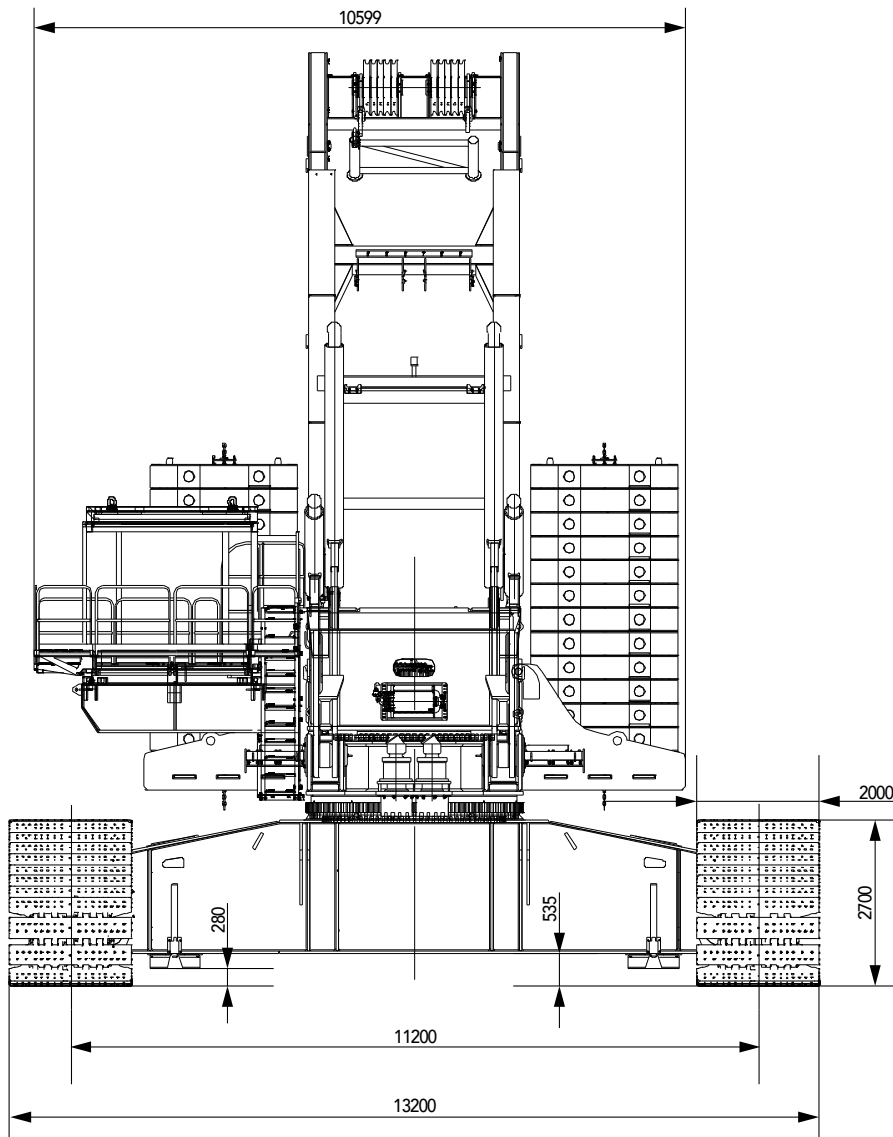
> 10

## Main Performance Parameters

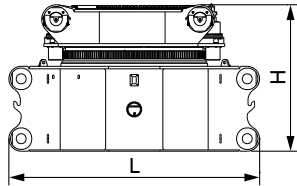
Major Performance & Specification of SCC2000A		
Performance indexes	Unit	Parameter
Maximum rated lifting capacity(HDB)	t	2000
Maximum rated lifting moment(HDB)	t·m	28000
Boom length	m	54~108
Jib length	m	36~108
Superlift mast length	m	50
Superlift mast radius	m	24~30
Maximum boom + jib	m	108+108
Maximum rope speed of single rope of main load hoist winch (outermost working layer)	m/min	121
Maximum rope speed of single rope of auxiliary load hoist winch (outermost working layer)	m/min	76.6
Maximum rope speed of single rope of boom hoist mechanism (outermost working layer)	m/min	58.3
Maximum rope speed of single rope of jib luffing mechanism (outermost working layer)	m/min	85.2
Maximum rope speed of single rope of superlift luffing mechanism (outermost working layer)	m/min	98.1
Slewing speed	m/min	0~0.82/0~0.41
Travelling speed	Km/h	1.02
Gradeability	%	10
Maximum output power of engine	Kw	746 (1800r/min)
Maximum torque of engine	N·m	4629 (1300rpm)
Machine weight (without superlift conterweight)	t	1182 (includes basic boom,2000t hook)
Average ground bearing pressure of the crawler	Mpa	0.255 (includes basic boom,2000t hook)
Maximum transport weight of single piece	t	67
Maximum transportat dimensions of single piece (L×W×H)	m	6.1×3.8×3.5

**Outline Dimension**

**Outline Dimension**

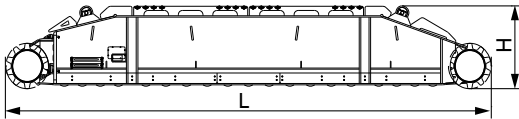


## Transport Dimension



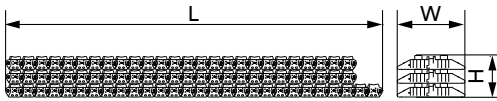
### Center swing structure( carbody+adapter) ×1

Length (L)	6.10m
Width (W)	3.65m
Height (H)	3.50m
Weight	67.0t



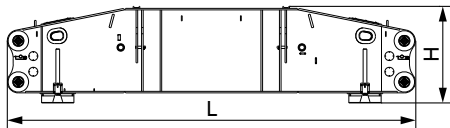
### Crawler frame assembly (without crawler pads) ×2

Length (L)	14.80m
Width (W)	1.80m
Height (H)	2.40m
Weight	54.3t



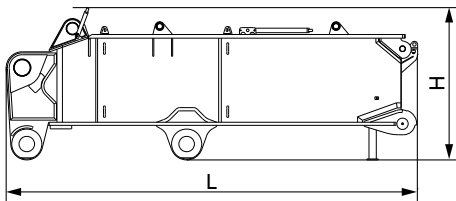
### Crawler pad assembly ×2

Length (L)	11.20m
Width (W)	2.00m
Height (H)	0.84m
Weight	44.0t



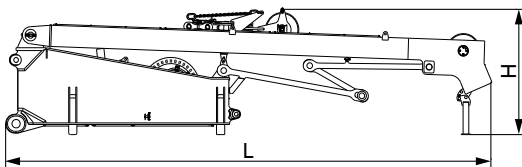
### Transverse beam ×2

Length (L)	10.40m
Width (W)	1.90m
Height (H)	2.50m
Weight	28.4t



### Front rotating bed ×2

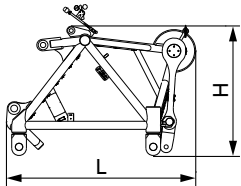
Length (L)	9.00m
Width (W)	3.50m
Height (H)	3.10m
Weight	46.6t



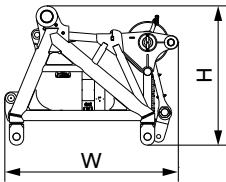
### Rear rotating bed assembly ×1

Length (L)	13.00m
Width (W)	3.60m
Height (H)	3.20m
Weight	46.9t

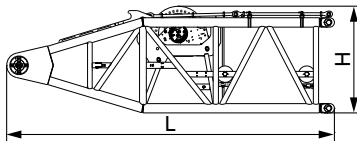
## Transport Dimension



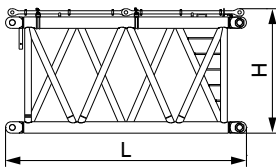
Boom tip ×1	
Length (L)	3.90m
Width (W)	3.80m
Height (H)	2.70m
Weight	11.1t



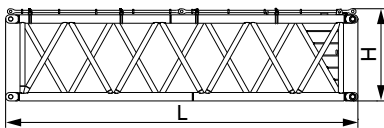
Connetion tip (for boom and jib) ×1	
Length (L)	3.70m
Width (W)	3.60m
Height (H)	3.00m
Weight	12.6t



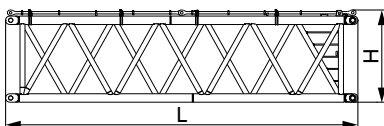
10m boom base(with 16.8t winch) ×1	
Length (L)	10.60m
Width (W)	3.80m
Height (H)	3.50m
Weight	41.6t



6m boom insert(36) ×2	
Length (L)	6.40m
Width (W)	3.70m
Height (H)	3.30m
Weight	10.9t

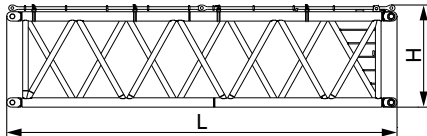


12m boom insert(45) ×2	
Length (L)	12.40m
Width (W)	3.70m
Height (H)	3.30m
Weight	20.5t



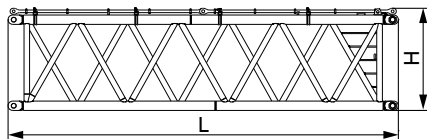
12m boom insert(40) ×1	
Length (L)	12.40m
Width (W)	3.70m
Height (H)	3.30m
Weight	19.9t

## Transport Dimension



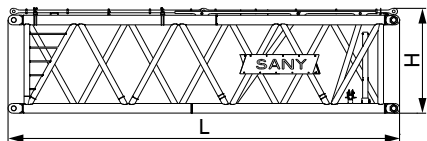
### 12m boom insert(36) ×2

Length (L)	12.40m
Width (W)	3.70m
Height (H)	3.30m
Weight	19.3t



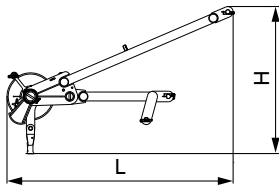
### 12m boom insert(30) ×1

Length (L)	12.40m
Width (W)	3.70m
Height (H)	3.30m
Weight	17.8t



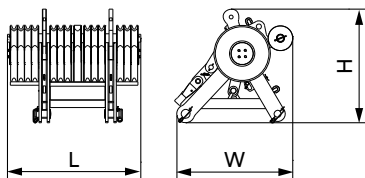
### 12m transitional section of boom ×1

Length (L)	12.40m
Width (W)	3.80m
Height (H)	3.30m
Weight	20.6t



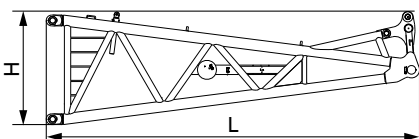
### Extension jib ×1

Length (L)	4.30m
Width (W)	1.80m
Height (H)	2.20m
Weight	1.8t



### Pulley block (left/right) ×2

Length (L)	2.30m
Width (W)	1.80m
Height (H)	1.80m
Weight	5.7t

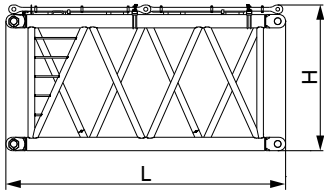


### 4.5m jib base ×1

Length (L)	10.50m
Width (W)	3.80m
Height (H)	3.20m
Weight	13.4t

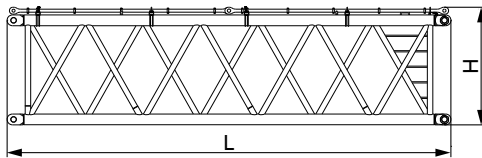


## Transport Dimension



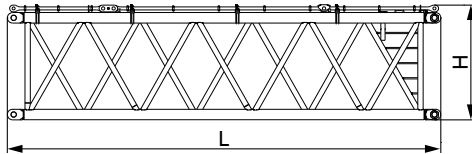
### 6m jib insert (20) (A/B) ×2

Length (L)	6.40m
Width (W)	3.80m
Height (H)	3.30m
Weight	7.9t



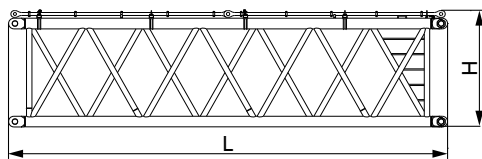
### 12m jib insert (20) ×1

Length (L)	12.40m
Width (W)	3.80m
Height (H)	3.30m
Weight	13.4t



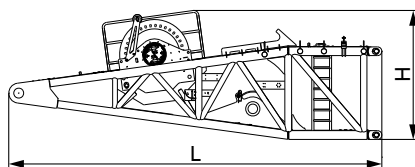
### 12m jib insert (17.5) (A/B) ×2

Length (L)	12.40m
Width (W)	3.80m
Height (H)	3.30m
Weight	12.3t



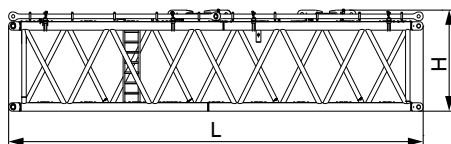
### 12m jib insert (12.5) ×1

Length (L)	12.40m
Width (W)	3.80m
Height (H)	3.30m
Weight	10.7t



### Superlift mast base (with 20.6t winch) ×1

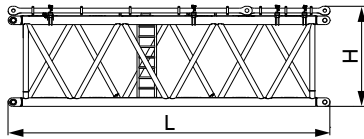
Length (L)	9.40m
Width (W)	3.50m
Height (H)	3.20m
Weight	33.5t



### 12m superlift mast insert (A/B) ×2

Length (L)	12.30m
Width (W)	3.50m
Height (H)	2.60m
Weight (with winch)	13.4t

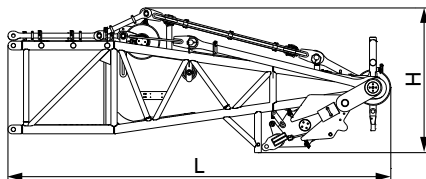
## Transport Dimension



### 8m superlift mast insert

×1

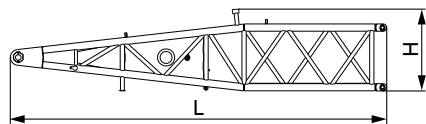
Length (L)	8.30m
Width (W)	3.50m
Height (H)	2.60m
Weight	9.0t



### Superlift mast top

×1

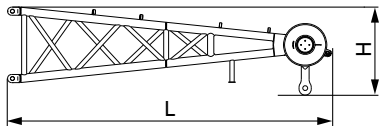
Length (L)	9.60m
Width (W)	3.50m
Height (H)	3.60m
Weight	24.5t



### Front mast base of luffing jib

×1

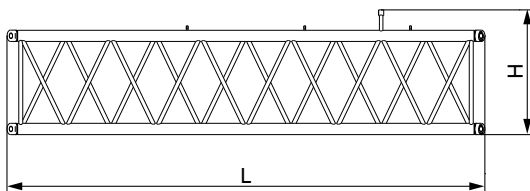
Length (L)	8.80m
Width (W)	2.60m
Height (H)	1.90m
Weight	4.8t



### Front mast top of luffing jib

×1

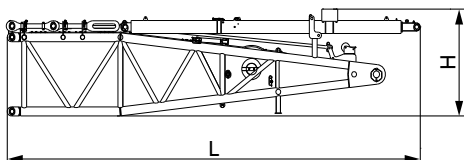
Length (L)	6.60m
Width (W)	2.50m
Height (H)	1.60m
Weight	4.5t



### Front mast insert of luffing jib

×1

Length (L)	12.20m
Width (W)	2.50m
Height (H)	1.90m
Weight	3.5t

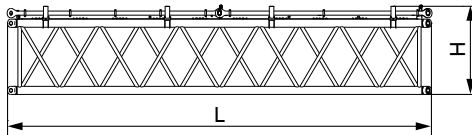


### Rear mast base of luffing jib

×1

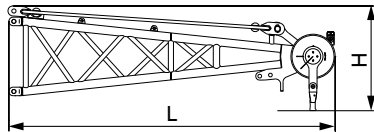
Length (L)	8.50m
Width (W)	3.00m
Height (H)	2.00m
Weight	7.4t

## Transport Dimension



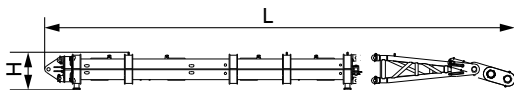
### Rear mast insert of luffing jib ×1

Length (L)	12.20m
Width (W)	2.90m
Height (H)	1.80m
Weight	5.4t



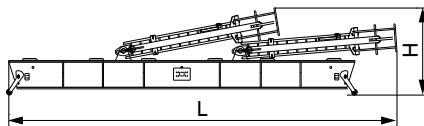
### Rear mast top of luffing jib ×1

Length (L)	6.60m
Width (W)	2.80m
Height (H)	1.80m
Weight	5.9t



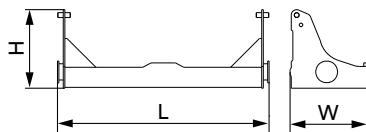
### Rear strut of superlift counterweight ×1

Length (L)	13.50m
Width (W)	3.30m
Height (H)	1.08m
Weight	25.0t



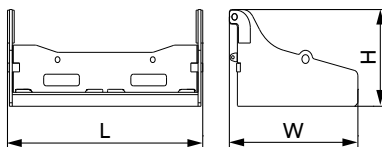
### Superlift counterweight tray ×1

Length (L)	10.50m
Width (W)	3.80m
Height (H)	2.00m
Weight	20.2t



### Carbody counterweight tray ×2

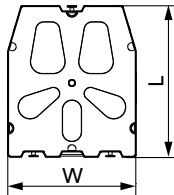
Length (L)	3.80m
Width (W)	1.40m
Height (H)	1.50m
Weight	2.2t



### Rear counterweight tray ×2

Length (L)	4.10m
Width (W)	2.70m
Height (H)	1.70m
Weight	11.2t

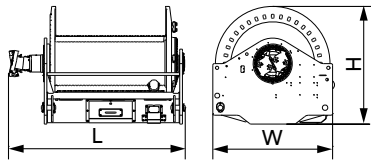
## Transport Dimension



### 10t counterweight block

×113

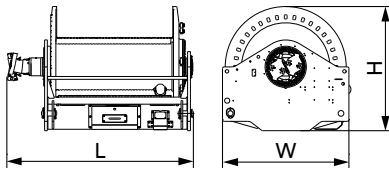
Length (L)	2.85m
Width (W)	2.40m
Height (H)	0.45m
Weight	10.0t



### Main load hoist mechanism

×2

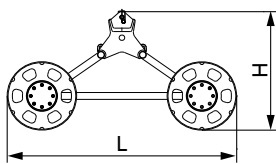
Length (L)	2.70m
Width (W)	1.80m
Height (H)	1.80m
Weight	21.2t



### Aux. load hoist mechanism

×1

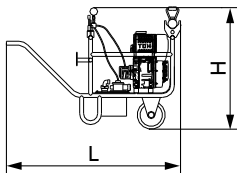
Length (L)	2.70m
Width (W)	1.80m
Height (H)	1.80m
Weight	15.1t



### Trolley

×1

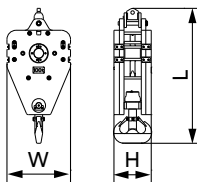
Length (L)	3.30m
Width (W)	2.50m
Height (H)	1.80m
Weight	2.0m



### Portable power pack

×1

Length (L)	1.60m
Width (W)	0.66m
Height (H)	1.10m
Weight	0.22t

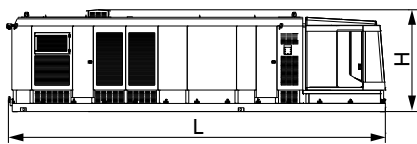
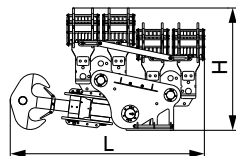
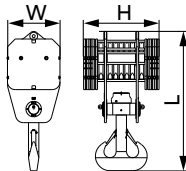


### 100t hook

×1

Length (L)	2.90m
Width (W)	1.40m
Height (H)	0.82m
Weight	8.0t

## Transport Dimension



### 400t hook

×1

Length (L)	3.58m
Width (W)	1.35m
Height (H)	1.94m
Weight	16.2t

### 2000t hook

×1

Length (L)	6.50m
Width (W)	1.80m
Height (H)	4.20m
Weight	49.3t

### Power container(with cab)

×1

Length (L)	12.20m
Width (W)	2.90m
Height (H)	3.20m
Weight	29.5t

Note:

- 1.The transport dimensions of each part are schematic, may not be proportional to the real parts. The dimensions are designed value without package considered.
- 2.The weight is designed value that the actual manufactured part may deviate slightly.
- 3.The dimensions and weight of each part may upgrade along the time. The final values are subject to the new product.

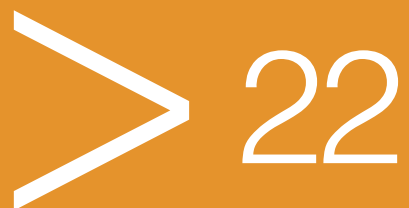


**SCC20000A**  
**SANY CRAWLER CRANE**  
**2000 TONS LIFTING CAPACITY**

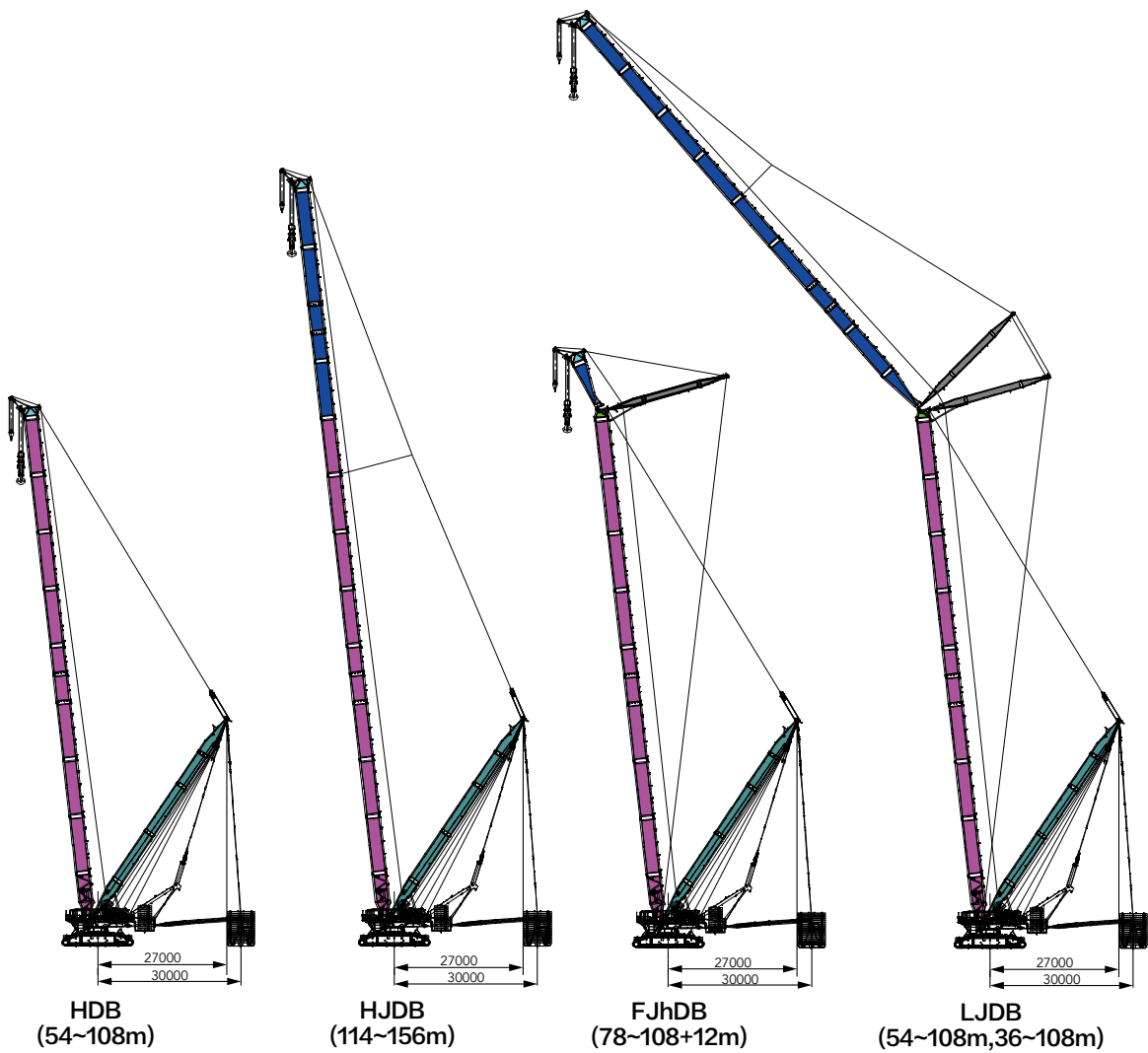
QUALITY CHANGES THE WORLD

## Configurations

- Page 23 Configurations Combination
- Page 24 HDB Configuration
- Page 27 HJDB Configuration
- Page 30 FJhDB Configuration
- Page 33 LJDB Configuration



**Combination**

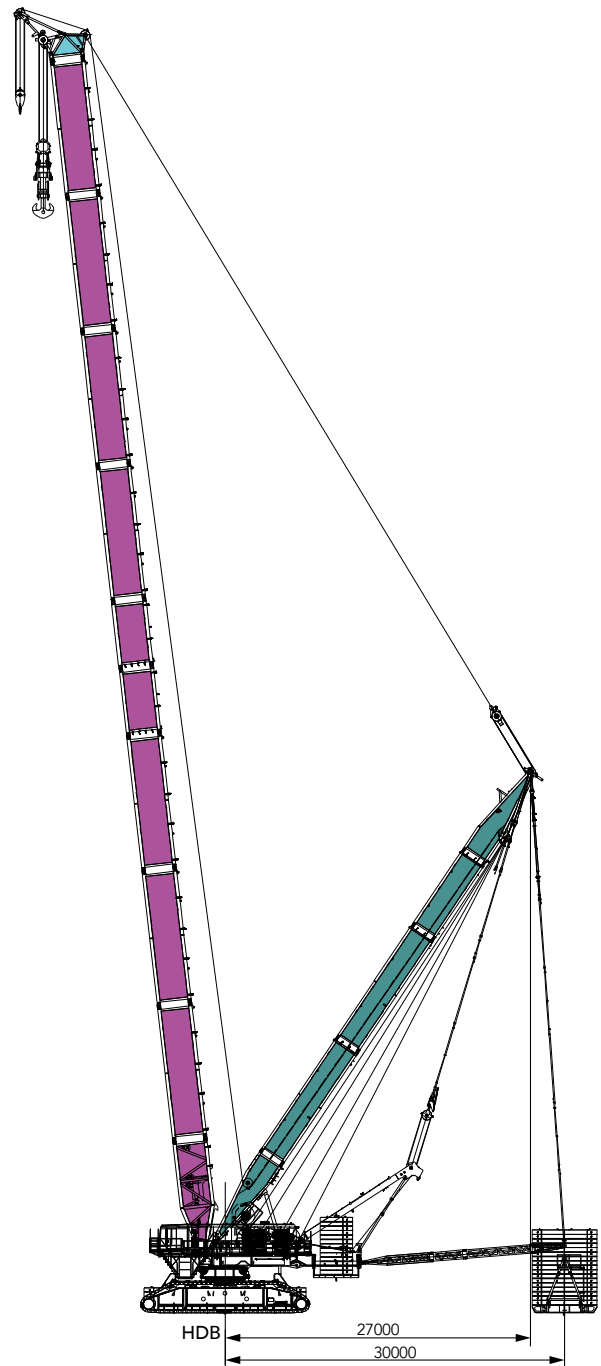


Configuration	Boom combination	Boom length
HDB	Boom+ superlift mast+ superlift counterweight	54m~108m
HJDB	Mixed boom+ superlift mast+ superlift counterweight	114m~156m
FJhDB	Boom+Fixed jib + superlift mast+ superlift counterweight	(78m~108m)+12m
LJDB	Boom + Luffing jib +superlift mast+ superlift counterweight	(54m~108m)+(36m~108m)

## Boom combination in HDB

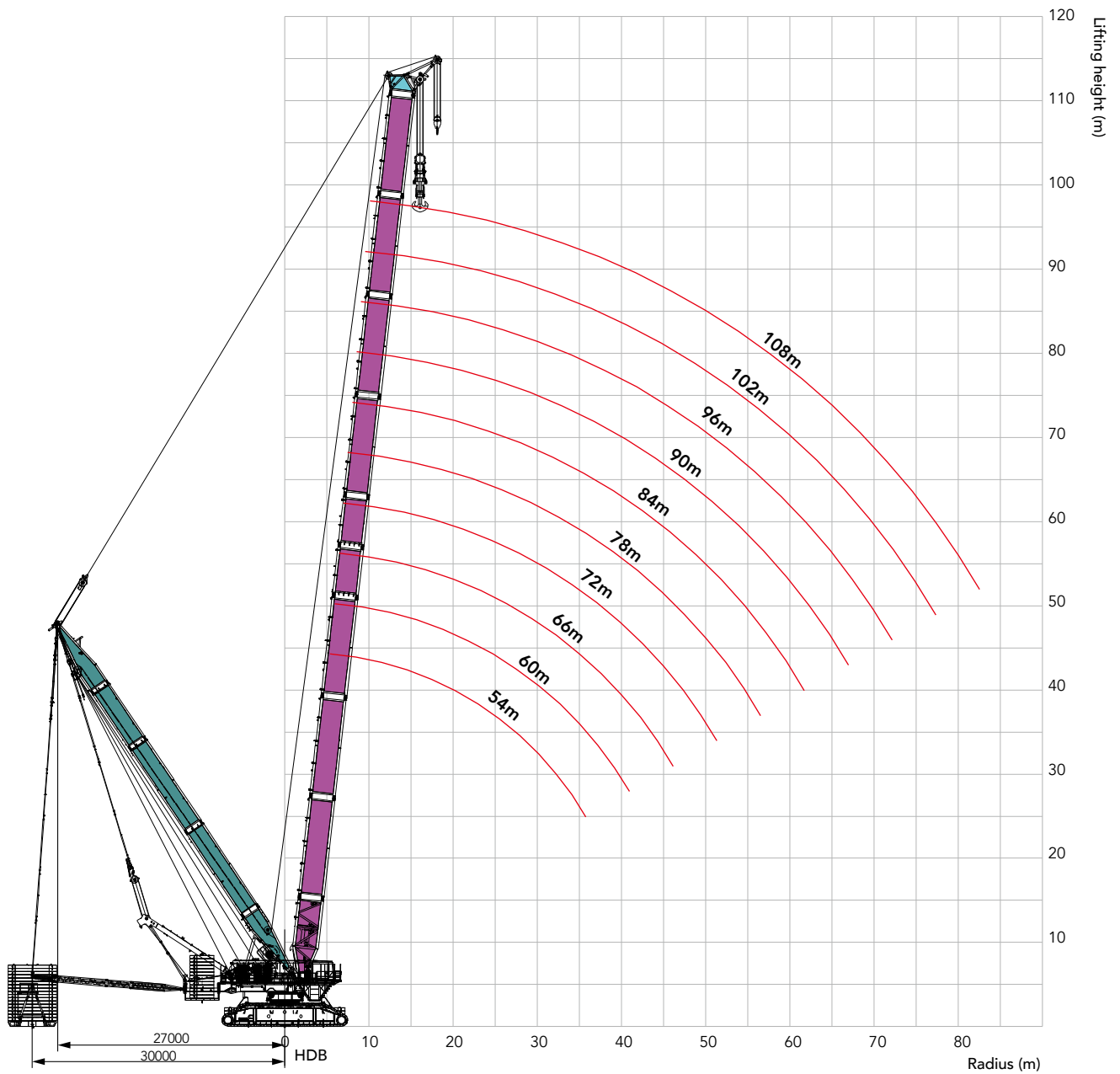
Boom combination in HDB Configuration

Boom length(m)	Boom insert	
	6m	12m
54	1	2
60	2	2
66	1	3
72	2	3
78	1	4
84	2	4
90	1	5
96	2	5
102	1	6
108	2	6





## Working range of HDB

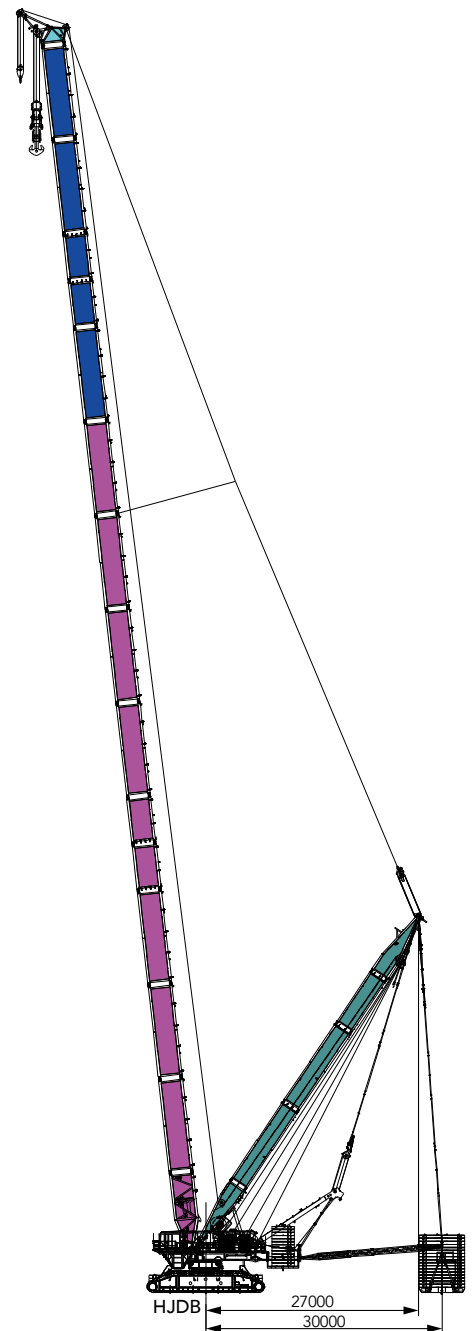


## Load chart of HDB Configuration

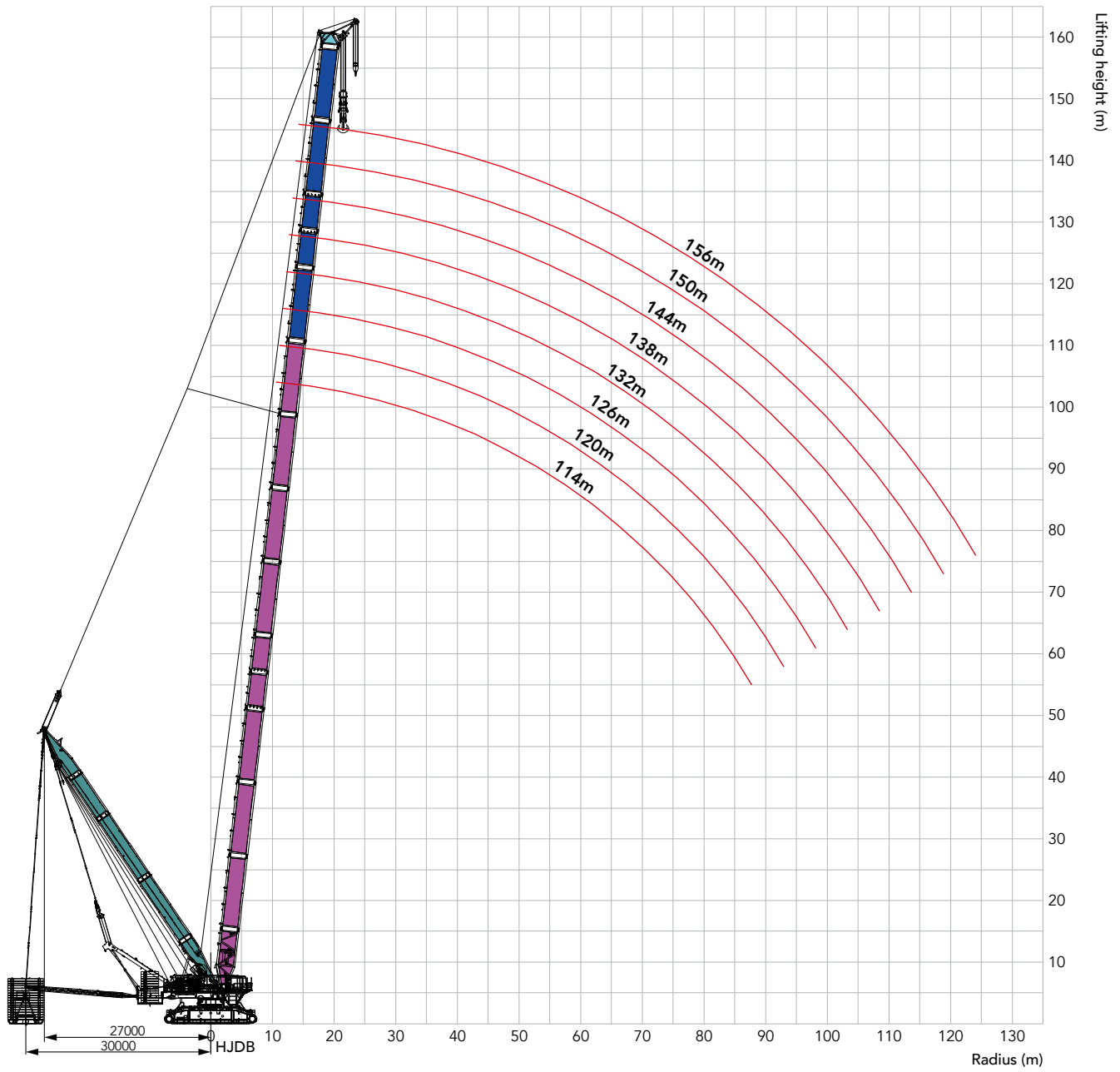
HDB Configuration											
Boom length 54m~108m, Superlift radius 30m, Superlift counterweight 810t, Rear counterweight 280t, Carbody counterweight 80t											
BL/R (m)	54	60	66	72	78	84	90	96	102	108	BL/R (m)
9	2000										9
10	2000	1586	1433								10
11	1920	1584	1433	1262	1119						11
12	1840	1583	1433	1262	1119	995	884				12
13	1792	1545	1433	1262	1119	995	884	790	708		13
14	1746	1507	1410	1262	1119	995	884	790	708	637	14
15	1714	1472	1409	1262	1119	995	884	790	708	637	15
16	1667	1438	1408	1262	1119	995	884	790	708	637	16
17	1570	1405	1383	1262	1119	995	884	790	708	637	17
18	1483	1373	1356	1255	1119	995	884	790	708	637	18
19	1425	1346	1327	1224	1119	995	884	790	708	637	19
20	1336	1320	1299	1194	1099	992	884	790	708	637	20
22	1214	1209	1206	1155	1069	973	875	789	708	637	22
24	1111	1107	1104	1099	1036	953	862	781	705	636	24
26	1023	1020	1016	1012	1010	931	850	774	700	633	26
28	924	945	942	937	935	910	838	766	696	629	28
30	839	880	876	872	870	866	818	757	691	625	30
32	774	814	819	815	812	808	789	736	682	621	32
34	712	744	768	764	762	758	755	715	674	617	34
36	662	687	718	719	716	712	710	691	650	602	36
38	614	633	663	678	676	672	669	665	628	588	38
40	567	597	617	638	639	635	633	629	608	569	40
44	483	524	534	556	572	572	569	565	563	533	44
48	408	452	476	487	504	512	516	512	510	501	48
52		389	422	435	446	456	464	465	465	461	52
56			369	391	398	407	416	419	420	420	56
60			318	346	361	363	374	378	380	381	60
64				302	324	330	336	342	345	347	64
68					287	302	305	309	314	317	68
72						270	280	279	284	288	72
76							255	258	258	263	76
80							226	237	237	239	80
84								212	219	219	84
88									199	202	88
92										186	92
96										168	96

## Boom combination in HJDB

Boom combination in HJDB Configuration				
Boom length(m)	Boom insert		Jib insert	
	6m	12m	6m	12m
114	2	6	1	-
120	2	6	2	-
126	2	6	1	1
132	2	6	2	1
138	2	6	1	2
144	2	6	2	2
150	2	6	1	3
156	2	6	2	3



### Working range of HJDB

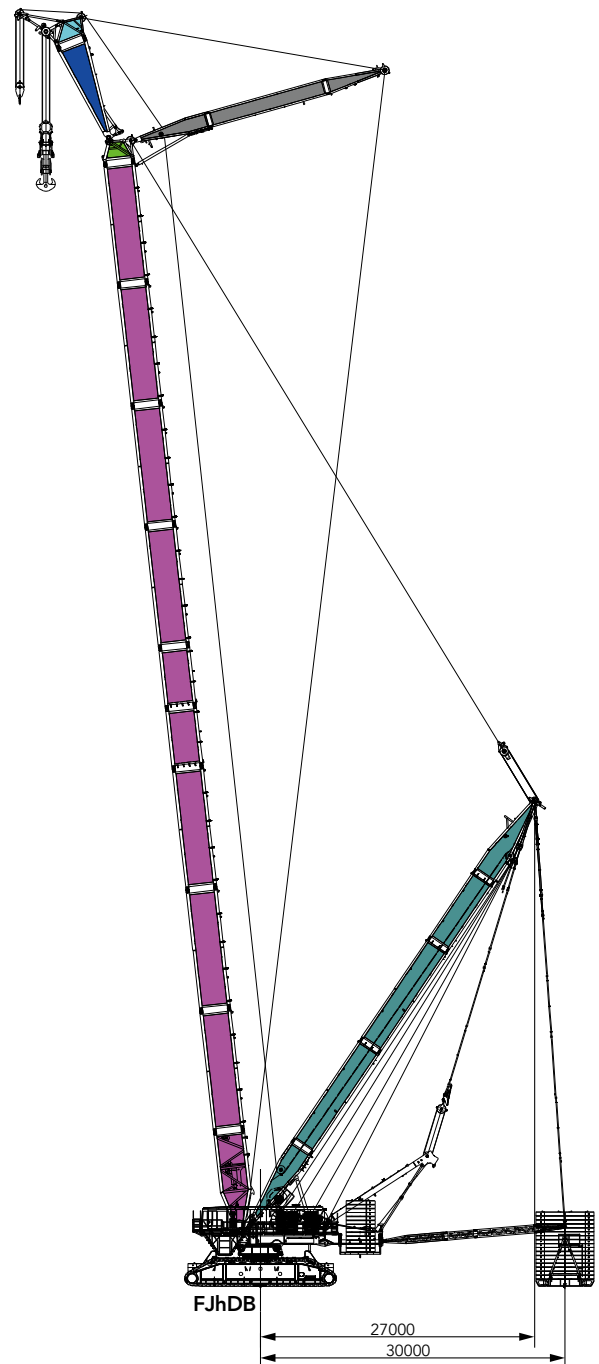


## Load chart of HJDB Configuration

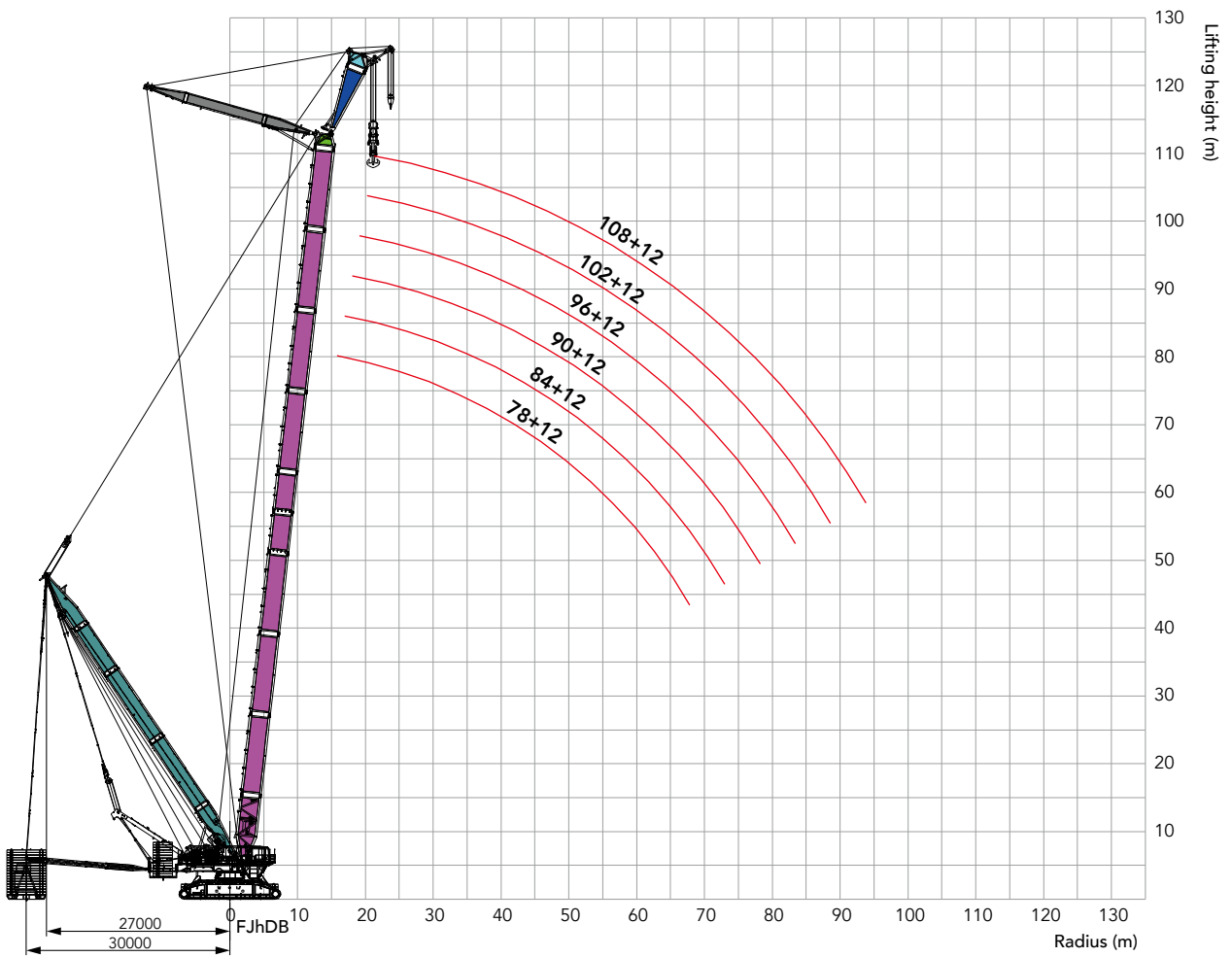
HJDB Configuration									
Boom length 114m~156m, Superlift radius 30m, Superlift counterweight 810t, Rear counterweight 280t, Carbody counterweight 80t									
BL/R (m)	114	120	126	132	138	144	150	156	BL/R (m)
14	578								14
15	578	517	462						15
16	578	517	462	413	373				16
17	578	517	462	413	373	336	304		17
18	578	517	462	413	373	336	304	274	18
19	578	517	462	413	373	336	304	274	19
20	578	517	462	413	373	336	304	274	20
22	578	517	462	413	373	336	304	274	22
24	578	517	462	413	373	336	304	274	24
26	578	517	462	413	373	336	304	274	26
28	573	515	460	413	373	336	304	274	28
30	565	509	454	411	373	336	304	274	30
32	562	504	446	410	373	336	304	274	32
34	548	499	438	409	371	334	304	271	34
36	542	494	432	407	369	332	304	269	36
38	533	488	425	405	367	330	300	268	38
40	526	478	418	403	365	328	298	266	40
44	496	470	404	398	360	324	295	262	44
48	475	451	390	393	354	320	293	260	48
52	432	427	373	382	348	316	290	257	52
56	395	392	353	365	343	311	287	253	56
60	363	360	335	347	332	302	281	250	60
64	335	332	317	332	316	291	272	245	64
68	310	308	299	315	302	275	264	238	68
72	288	285	281	293	287	268	255	231	72
76	268	266	266	271	269	257	244	224	76
80	247	248	248	250	248	244	235	217	80
84	226	228	232	232	230	229	226	209	84
88	207	210	214	214	214	213	213	201	88
92	193	192	199	197	198	197	198	193	92
96	179	179	181	183	183	183	184	180	96
100	163	167	168	168	169	169	171	169	100
104		152	158	155	156	157	159	152	104
108			144	144	143	144	146	145	108
112			123	134	134	133	135	135	112
116				120	124	124	125	125	116
120					114	120	117	116	120
124						110	109	108	124
128							100	100	128

**Boom combination in FJhDB****Boom combination in FJhDB Configuration**

Boom length(m)	Boom insert	
	6m	12m
78	1	4
84	2	4
90	1	5
96	2	5
102	1	6
108	2	6



# Working range of FJhDB



## Load chart of FJhDB Configuration

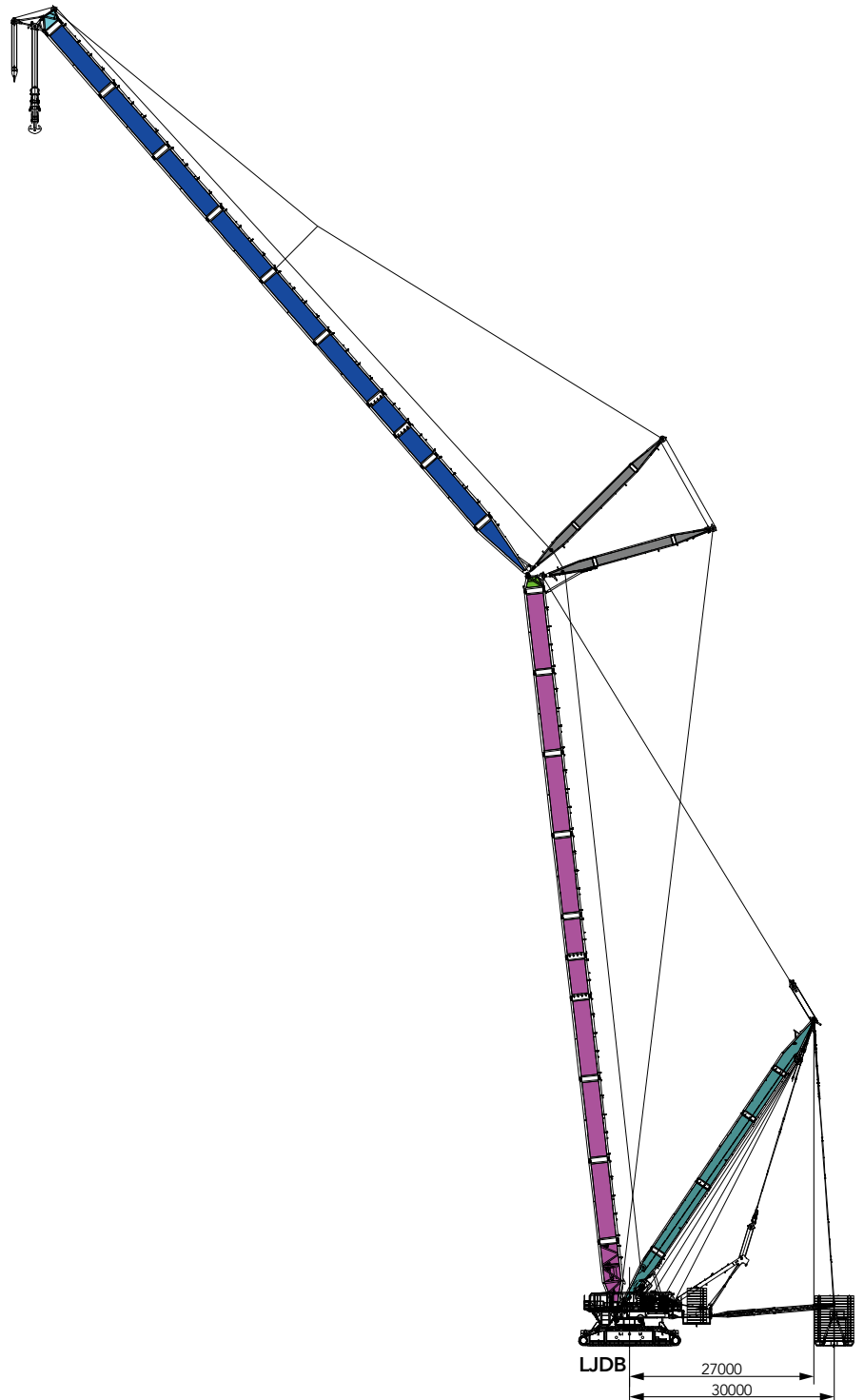
FJhDB Configuration							
Boom length 78m~108m, Fixed jib 12m, Offset angle 15°, Superlift radius30m, Superlift counterweight 810t, Rear counterweight 280t, Carbody counterweight 80t							
BL/R (m)	78	84	90	96	102	108	BL/R (m)
15	809	724					15
16	809	724	650				16
17	809	724	650	583	526		17
18	809	724	650	583	526	478	18
19	809	724	650	583	526	478	19
20	809	724	650	583	526	478	20
22	809	724	650	583	526	478	22
24	809	724	650	583	526	478	24
26	786	721	650	583	526	478	26
28	779	714	647	583	526	478	28
30	754	703	643	581	525	473	30
32	703	674	639	578	524	472	32
34	652	646	635	574	523	470	34
36	611	605	598	564	520	469	36
38	571	565	560	554	517	468	38
40	539	532	527	521	500	458	40
44	479	473	467	461	455	435	44
48	428	422	417	411	405	399	48
52	386	379	374	368	362	356	52
56	349	343	337	330	325	318	56
60	317	311	305	299	294	287	60
64	291	284	277	271	265	259	64
68	262	259	253	247	241	235	68
72	232	237	233	226	220	213	72
76	202	211	213	207	201	195	76
80	186	186	193	191	185	177	80
84		162	169	172	169	162	84
88		142	148	152	154	149	88
92			129	133	136	135	92
96				115	118	119	96
100					102	104	100
104						89.6	104
108						75.2	108



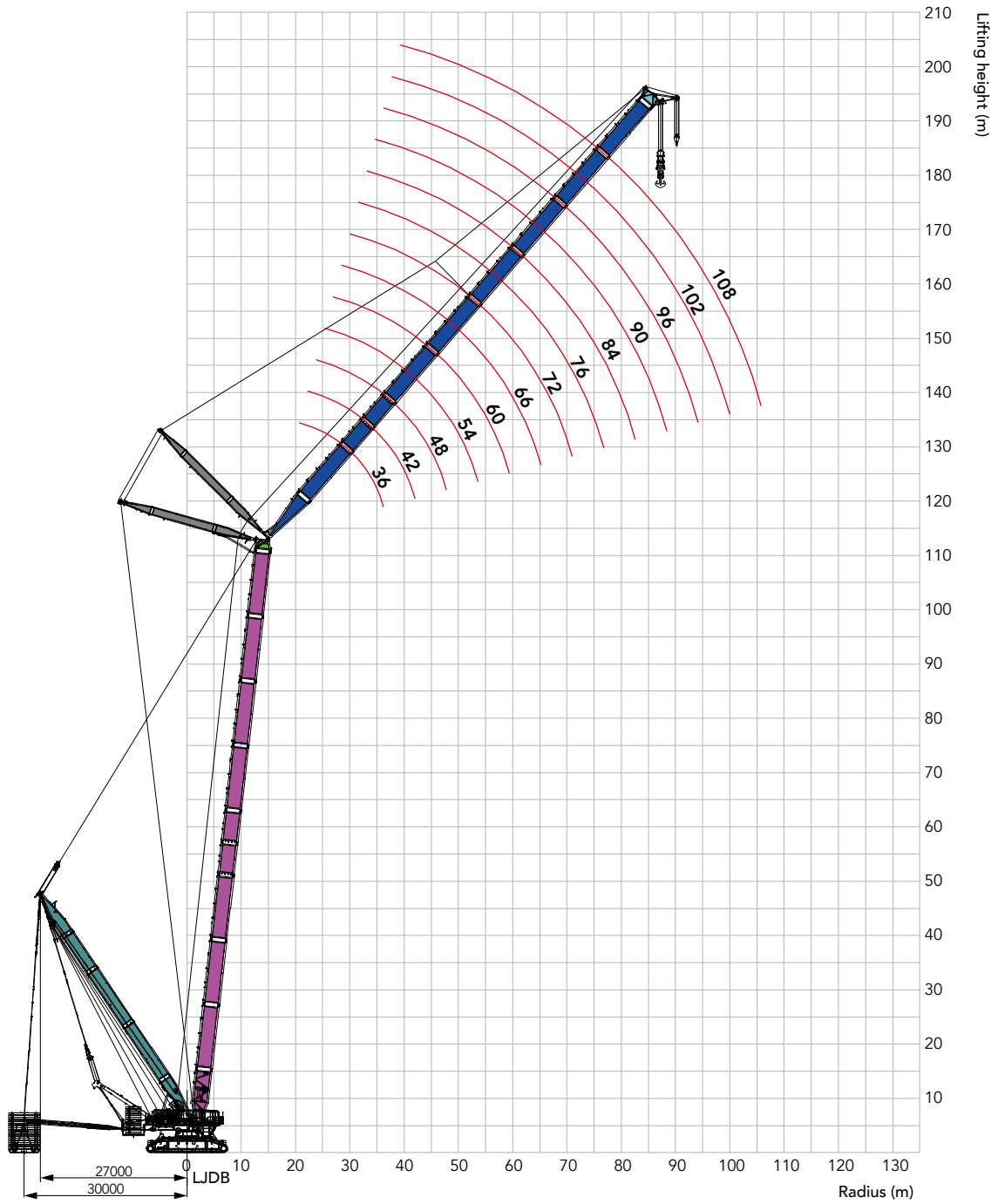
## Boom combination in LJDB

Boom combination in LJDB Configuration		
Jib length(m)	Jib insert	
	6m	12m
36	2	1
42	1	2
48	2	2
54	1	3
60	2	3
66	1	4
72	2	4
78	1	5
84	2	5
90	1	6
96	2	6
102	1	7
108	2	7

Note: See HDB configuration for boom length



## Working range of LJDB



## Load chart of LJDB Configuration

LJDB Configuration 1/4														
Boom length 54m, Boom angle 85°, Jib length 36m~108m, Superlift radius 30m, Superlift counterweight 810t, Rear counterweight 280t, Carbody counterweight 80t														
Jib/R (m)	36	42	48	54	60	66	72	78	84	90	96	102	108	Jib/R (m)
19	664													19
20	664													20
22	664	624	527											22
24	664	608	527	498										24
26	645	592	527	489	421									26
28	620	576	527	480	421	394								28
30	562	562	515	471	421	387	337	313						30
32	511	525	503	462	421	380	337	310	269					32
34	468	482	492	453	413	373	337	307	269	233				34
36	430	442	460	443	406	366	337	304	269	233	209	182		36
38	398	409	425	426	400	359	333	301	269	233	209	181	160	38
40	370	380	396	397	393	350	329	298	269	233	209	180	160	40
44		332	345	347	348	332	320	292	265	233	209	178	160	44
48		294	305	308	307	306	302	285	260	230	207	176	160	48
52			273	276	274	274	271	269	254	227	203	174	158	52
56				247	246	246	243	241	238	223	200	171	156	56
60				221	223	223	220	218	216	215	197	169	153	60
64					202	203	200	199	196	195	193	167	150	64
68						186	183	182	179	178	176	164	148	68
72							167	166	163	163	160	159	146	72
76							148	153	149	149	145	143	140	76
80								139	136	137	133	132	128	80
84									126	127	122	121	118	84
88										111	117	113	111	88
92											107	104	100	92
96												97.5	95.4	96
100													90.4	100
104													80.5	104
108														108
112														112

## Load chart of LJDB Configuration

LJDB Configuration 2/4														
Boom length 72m, Boom angle 85° , Jib length 36m~108m, Superlift radius 30m, Superlift counterweight 810t, Rear counterweight 280t, Carbody counterweight 80t														
Jib/R (m)	36	42	48	54	60	66	72	78	84	90	96	102	108	Jib/R (m)
22	523	478												22
24	523	473	419											24
26	515	468	419	383										26
28	502	463	419	380	339									28
30	489	451	414	377	339	302	273							30
32	479	439	405	374	339	302	273	264						32
34	468	429	397	367	336	302	273	259	222					34
36	446	418	389	360	331	302	273	254	222	208	179			36
38	420	407	382	352	325	298	273	248	222	204	179	158		38
40	388	396	376	344	320	294	270	243	222	200	179	156	137	40
44	336	347	352	330	310	285	263	238	218	196	179	154	137	44
48		304	318	316	301	273	256	232	213	192	175	152	137	48
52			283	292	285	261	249	226	209	189	172	149	135	52
56				262	266	249	243	220	205	185	169	147	134	56
60				228	239	239	237	214	201	181	167	145	132	60
64					216	218	220	207	197	177	164	143	130	64
68						199	201	196	188	172	162	141	128	68
72						172	181	180	176	168	159	138	125	72
76							158	165	162	163	154	136	123	76
80								144	147	148	145	133	121	80
84								125	133	137	133	128	119	84
88									116	126	123	122	115	88
92										111	114	112	107	92
96										96.3	102	104	100	96
100											89.2	95.4	93.6	100
104												84.3	86.5	104
108												72.2	76.4	108
112													66.3	112

## Load chart of LJDB Configuration

LJDB Configuration 3/4														
Boom length 84m, Boom angle 85° , Jib length 36m~108m, Superlift radius 30m, Superlift counterweight 810t, Rear counterweight 280t, Carbody counterweight 80t														
Jib/R (m)	36	42	48	54	60	66	72	78	84	90	96	102	108	Jib/R (m)
22	440													22
24	440	377												24
26	440	370	356	340										26
28	429	363	356	334	294									28
30	418	356	356	328	294	268								30
32	406	348	348	322	294	265	235							32
34	396	340	340	316	290	262	235	217	190					34
36	387	333	333	310	286	259	235	215	190	176				36
38	378	325	326	304	281	256	233	213	190	174	152			38
40	370	318	320	298	275	251	231	211	190	172	152	134	121	40
44	342	301	307	285	266	243	225	207	188	170	152	134	121	44
48		289	296	271	258	235	220	201	185	168	152	134	121	48
52			282	261	249	227	214	196	181	165	148	133	121	52
56			257	250	239	218	209	190	177	161	146	131	119	56
60				238	232	211	204	184	173	157	143	129	117	60
64					217	202	197	178	170	153	141	126	115	64
68					189	195	191	172	166	148	138	124	113	68
72						178	179	166	162	144	136	121	111	72
76							163	161	157	139	133	119	109	76
80							138	149	148	135	130	116	108	80
84								129	136	131	126	112	106	84
88									120	126	121	107	104	88
92										114	114	101	98.8	92
96										100	105	96.6	93.6	96
100											92.6	91.5	87.4	100
104												86.4	81.3	104
108												74.3	76.2	108
112													68.1	112

## Load chart of LJDB Configuration

LJDB Configuration 4/4														
Boom length 108m, Boom angle 85°, Jib length 36m~108m, Superlift radius 30m, Superlift counterweight 810t, Rear counterweight 280t, Carbody counterweight 80t														
Jib/R (m)	36	42	48	54	60	66	72	78	84	90	96	102	108	Jib/R (m)
24	297*													24
26	297*	277*												26
28	297*	272*	240*											28
30	291*	267*	240*	227*	196*									30
32	285*	262*	240*	223*	196*	181*								32
34	278*	256*	235*	219*	196*	180*	161*							34
36	270*	249*	231*	215*	196*	179*	161*	147*	130*					36
38	264*	244*	226*	212*	194*	178*	161*	146*	130*	126*				38
40	258*	238*	222*	208*	191*	177*	161*	145*	130*	123*	106*			40
44	247*	227*	213*	199*	185*	172*	158*	143*	130*	120*	106*	94.8*	84.6*	44
48		218*	205*	191*	178*	166*	153*	139*	128*	117*	106*	94.8*	84.6*	48
52		209*	197*	183*	171*	160*	147*	135*	124*	114*	104*	94.8*	83.4*	52
56			191*	176*	166*	155*	142*	131*	121*	111*	101*	93.3*	81.9*	56
60				170*	161*	147*	138*	127*	117*	108*	99.6*	91.2*	80.2*	60
64				163*	155*	142*	133*	123*	114*	105*	97.4*	88.5*	78.4*	64
68					150*	137*	129*	118*	110*	102*	94.5*	86.2*	76.6*	68
72						132*	126*	115*	107*	99.7*	91.4*	84.1*	74.4*	72
76							127*	122*	111*	104*	96.5*	89.3*	81.3*	76
80								119*	107*	101*	93.3*	86.2*	79.2*	80
84									103*	98.9*	90.6*	84.1*	76.2*	84
88									99.6*	95.6*	87.4*	81.3*	74.2*	88
92										93.4*	84.2*	78.5*	71.6*	92
96											82.3*	75.7*	69.1*	96
100												73.3*	66.7*	100
104													71.0*	104
108														108
112														112
116														116



## Zhejiang Sany Equipment Co.,LTD

SANY Crawler Crane Industrial Park, No. 2188 Daishan Road, Wuxing District, Huzhou City, Zhejiang Province, P. R. China Zip 313028

Consulting [sanycrane@sanygroup.com](mailto:sanycrane@sanygroup.com) (Crane BU) / [crd@sany.com.cn](mailto:crd@sany.com.cn) (IHQ)

After-sales Service 0086-400 6098 318

**Reminder:**

Any change in the technical parameters and configuration due to product modification or upgrade may occur without prior notice. The machine in the picture may include additional equipment. This brochure is for reference only, and goods in kind shall prevail.

Copyright at SANY. No part of this brochure may be copied or used for any purpose without written approval from SANY.

© Edited in May 2023

