

# SCA2600A

## Lattice Boom Crawler Crane

Quality Changes the World



Max. Lifting Capacity: 300 USt  
Max. Boom Length: 301.8 ft  
Max. Boom + Jib Length: 203.4 + 206.7 ft



**Lattice Boom Crawler Crane**  
**SCA2600A**

P03

Main Features

- Driver's Cab
- Upperworks
- Lowerworks
- Counterweight
- Hydraulic System
- Operating Weight
- Ground Pressure
- Gradeability
- Operating Equipment
- Safety Devices

P10

Technical Parameters

- Main Performance Parameters
- Outline Dimension
- Transport Dimensions
- Transport Plan
- Self-Assembly and Disassembly plan

P24

Boom and Jib Combinations

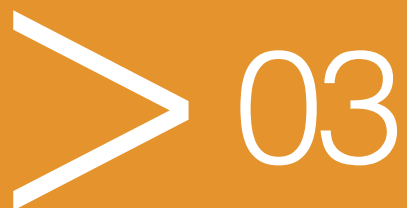
- (H) Main Boom Operating Conditions
- (FJ) Fixed Jib Operating Conditions
- (LJ) Luffing Jib Operating Conditions
- Shield Operating Conditions



**SCA2600A**  
**LATTICE BOOM CRAWLER CRANE**  
**300 UST (272.2 TONS) LIFTING CAPACITY**

## Main Features

- Page 04 Driver's Cab
- Page 04 Upperworks
- Page 05 Lowerworks
- Page 06 Counterweight
- Page 06 Hydraulic System
- Page 06 Operating Weight
- Page 06 Ground Pressure
- Page 06 Gradeability
- Page 07 Operating Equipment
- Page 08 Safety Devices



## Driver's cab



### Exterior

- The cab's industrial design is made by PORSCHE with smooth outline in aesthetic novelty. The great breakthrough marks it from the traditional engineering machinery, building a distinct brand identification. Sliding door structure is adopted, that is perfectly suitable on the crawler crane for the operator to sliding on and off the door. Fully-enclosed steel frame is applied with large faces of high-strength tempered glass on front, side and top ceiling, admitting sufficient lights. Furthermore, the cab is capacious and bright, offering wider view for the operator.

### Comfortability

- Multimode and multilevel adjustable suspension seat with minimum vibration and noise is mounted, providing the most comfortable driving experience for the operator. Air conditioning and heater are provided to adjust the indoor temperature to a perfect level, dropping from 131°F (55°C) to 81.5°F (27.5°C) within 20 minutes. The right and left armrests as well as the auxiliary operating panel are installed with operating handles, control buttons, ignition lock and other components. The seat, handles and buttons are laid out ergonomically with full consideration given to the operator's needs and habits. The control box and seat can be adjusted to the most comfortable position for the operator to make operation at ease. The driver's cab can tilt 25° upward or downward as needed for the work, or rotate to the dead ahead of the platform to facilitate the transportation.

## Upperworks



### Engine

- Cummins (stage V)
- Rated power: 400 HP;
- Rated speed: 2,100 rpm;
- Max. output torque: 1,600 ft-lb;
- Speed at maximum output torque: 1,400 rpm.

### Hoisting Mechanism

- The main and aux. winch mechanism are driven independently, which is featured in compact structure, easy assembly. The hardly-worn and maintenance-free embedded wet brake ensures the winch safety.
- The hydraulic motor with variable displacement can match the load with automatic adjustment of displacement to achieve highest winch speed.
- Quality rotation-resistant wire rope is selected to ensure the safety of load lifting and longer service life.
- Wire rope lug is adopted for easier and convenient rope assembly and disassembly.

Main Hoisting Mechanism	Drum diameter (non free fall)	2'1" (630mm)
	Drum diameter (free fall)	2'9" (837mm)
	Rope speed on the outermost work layer (non free fall)	0~410ft/min (0~125m/min)
	Rope speed on the outermost work layer (free fall)	0~384ft/min (0~117m/min)
	Wire rope diameter	1" (28mm)
	Wire rope length for main hoisting winch	1804'6" (550m)
	Rated single line pull	33.1Klb (15t)
Auxiliary Hoisting Mechanism	Drum diameter (non free fall)	2'1" (630mm)
	Drum diameter (free fall)	2'9" (837mm)
	Rope speed on the outermost work layer (non free fall)	0~410ft/min (0~125m/min)
	Rope speed on the outermost work layer (free fall)	0~384ft/min (0~117m/min)
	Wire rope diameter	1" (28mm)
	Wire rope length for aux. hoisting winch	1279'6" (390m)
	Rated single line pull	33.1Klb (15t)



## Upperworks

### Luffing Winch Mechanism

- Including: luffing mechanisms of the boom and jib;
- Drums with folded-line grooves are adopted for all luffing devices. Hydraulic motor drives the planetary gear reducer to realize multiple composite actions and it is equipped with good inching performance.

Boom Luffing Mechanism	Drum diameter	2'1" (630mm)
	Rope speed on the outermost work layer	0~427ft/min (0~130m/min)
	Wire rope diameter	1" (28mm)
	Wire rope length of boom luffing winch	925'2" (282m)
	Rated single line pull	50.7Klb (23t)
Jib Luffing Mechanism	Drum diameter	1'6" (470mm)
	Rope speed on the outermost work layer	0~253ft/min (0~77m/min)
	Wire rope diameter	20mm
	Wire rope length of jib luffing winch	1345'2" (410m)
	Rated single line pull	17.6Klb (8t)

### Slewing Mechanism

- Large motor is adopted for the slewing hydraulic system to drive through a planetary gear reducer and enables 360° rotation. The slewing speed is 0--1.8rpm, which can realize infinitely variable speed. The slewing, free of starting and stopping impact, operates steadily and is equipped with neutral free slipping function. When the control handle is in neutral position and no slewing speed is pick up, slewing mechanism is locked to prevent backlash during crane walking or transport. Slewing bearing device: three-row roller external gear slewing bearing is adopted



## Lowerworks

### Car-body

- The hydraulic cylinder drives power pin to be connected with track frame to facilitate the assembly and disassembly. Frame structures are welded by high-strength steel. Larger chassis design greatly improves the stability of the crane.

### Crawler Assembly

- Track frame: each track frame is equipped with an independent travel driving device. A hydraulic travel motor drives the planetary gear reducer and realizes independent traveling through the transmission of driving wheel. The travel system is configured with four speed options to meet various requirements: sufficient traction is provided in low speed to realize 100% pick and carry, while faster job-site transfer is possible in high travel speed. Infinite variable speed can be realized in travel driving system.
- Track shoe: it is manufactured by advanced casting techniques and materials with high strength and good wear resistance. After assembled on the machine, the tension can be adjusted by a hydraulic jack with shims used to secure the crawler position.

## Counterweight



- Include Carbody Counterweight, Rear Counterweight

Name	Quantity	Length	Width	Height	Unit Weight
Carbody Counterweight	2	18' (5.48m)	5'6" (1.72m)	2' (0.6m)	44.1Klb (20t)
Rear Counterweight	14	7'1" (2.17m)	6'5" (1.96m)	1'8" (0.51m)	13.2Klb (6t)
Rear Counterweight Tray	1	24'7" (7.5m)	6'5" (1.96m)	2'4" (0.7m)	35.3Klb (16t)

## Hydraulic System



- The whole hydraulic system includes that of hoisting, traveling, slewing, luffing, servo, back-stop, cooling system, and auxiliary hydraulic system. Major hydraulic components are original imports.
- Features: the main system is open circuit and load-sensitive system, which can realize flow distribution irrelevant from load. The hydraulic proportional pilot control is used for agile operation and excellent inching performance. System pressure is 326 kgf/cm<sup>2</sup> (4641psi).
- Electrically-controlled proportional control components are adopted for the servo system to realize precise and intelligent control.
- External controlled and outflow balance valve is adopted for the back-stop system, which ensures the safety and reliability.
- The cooling hydraulic system consists with large independent power radiator and three-in-one radiator, featured with large heat exchange power and good cooling effect.

## Operating Weight



- The operating weight is about 542Klb (246t), including the Upperworks, lowerworks, rear counterweight of basic machine, center counterweight, 66ft (20m) basic boom and 573Klb (260t) hook.

## Ground Pressure

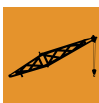


- The average ground pressure of machine with basic boom is 1.4 kgf/cm<sup>2</sup> (20.3psi).

## Gradeability



- The gradeability of the track base boom machine with basic boom is 30%.



## Operating Equipment

All operating equipment adopt high-strength steel pipe, so do the steel plates. The sheaves used on boom/jib tip and hooks are all rolled material and welded structure.

### Boom

- The boom is a spatial lattice structure with equal section areas for inserts and tapered section areas for both ends. With pipes welded together, and boom tip and root strengthened with steel plates, it can better transfer the load.
- The length of the boom ranges from that (66ft/20m) of the base boom to the maximum length (302ft/92m) and it can be increased progressively by 10ft(3m).
- Composition: boom base 33ft(10m)×1, transitional insert 20ft(6m)×1, boom top 3.3ft(1m)×1, insert section 10ft(3m)×1, and insert section 20ft(6m)×2 and 39.4ft(12m)×5. Upper boom point is 7ft(2.2m) which can be installed on both boom top and luffing jib top.

### Fixed Jib

- The fixed jib is a spatial lattice structure with equal section areas for inserts and tapered section areas for both ends. With pipes welded together, and boom tip and root strengthened with steel plates, it can better transfer the load.
- The length of fixed jib ranges from 43ft(13m) to 138ft(42m), which can be increased progressively by 20ft(6m) and can be installed on boom from 95ft(29m) -203ft(62m).
- Composition: jib base 21ft(6.5m)×1, jib insert 20ft(6m)×2 and 38ft(11.5m)×2, and jib top 21ft(6.5m)×1.

### Luffing Jib

- The luffing jib is a spatial lattice structure with equal section areas for inserts and tapered section areas for both ends. With pipes welded together, and boom tip and root strengthened with steel plates, it can better transfer the load.
- The length of the luffing jib ranges from 69ft(21m) to 207ft(63m), increased by 10ft(3m) progressively, which can be installed on boom from 85ft(26m) - 203ft(62m).
- Composition: jib base 20ft(6m)×1, jib insert 10ft(3m)×1, 20ft(6m)×2, jib insert 39.4ft(12m)×3, and jib top 20ft(6m)×1. The upper boom point is installed on jib top.

### Hook Block

- There are five hook capacity for options:

Hook Type	Rated Capacity	No. of sheaves	Unit weight
Hook Block	286.6USt (260mt)	9	11.5Klb (5.2t)
Hook Block	176.4USt (160mt)	5	7.1Klb (3.2t)
Hook Block	110.25USt (100mt)	3	5.1Klb (2.3t)
Hook Block	55.1USt (50mt)	1	3.7Klb (1.7t)
Hookball	17.6USt (16mt)	None	2.0Klb (0.9t)
Hook Block	300USt (273mt)	9	10.9Klb (4.9t)

## Safety Devices



### Load Moment Limiter

- The proprietary load moment limiter is independently developed by Sany, which is a specially designed over-load protective system for SCC series crawler crane, with performance structural parameters of all series of crawler cranes directly stored inside, such as bearing curve, boom and jib weight, center of gravity, and other geometrical parameters. Moment calculation adopts the targeted optimization model and combines SANY technology accumulated in crawler crane industry for many years. Having the customized advantage, this system maximizes the utilization efficiency of the crane while guaranteeing the lifting safety so as to avoid the technology disconnection and different after-sales service due to the separation between the crane and LML, thus improving the overall quality of the crane.
- As independent safety control system fully controlled by computer, the LML can automatically detect the load weight, work radius, and boom angle, compare rated capacity with actual load, actual radius and actual boom angle. In normal operation, the LML can intelligently determine and cut off the crane from the dangerous direction. It also has black box function and record overload information.
- LML consists of 34.67cm large colourful display, main machine, angle sensor, load sensor and pressure sensor.

### Over-hoist Protection of the Main and Auxiliary Hooks

- It is used to prevent the over-hoist of the hook. When the lifting hook is raised to a certain height, the limit switch will start working, and hook will be automatically cut off from moving up by the control system. Meanwhile, the display and the buzzer will give alarms. At this moment, only hook lowering is allowed to prevent over-hoist action.

### Over-release Protection Device of the Main and Auxiliary Hook

- It is used to prevent the wire rope over-release. When the wire rope is released to the last three wraps, the limit switch will start working, and the releasing of rope will be automatically stopped by the control system. Meanwhile, the display and the buzzer will give alarms. At this moment, only rope retraction is allowed to prevent over release action.

### Assembly/Work Mode Switch

- In assembly mode, some of the safety devices are ineffective for helping crane assembly, for example, jib lower limit, LML boom angle limit and overload.
- In work mode, all safety devices can work.

### Crane boom/jib limit device

- When the elevation angle of the boom exceeds 85° or 88° (LJ configuration) jib angle exceeds 75°, corresponding limit switch will be triggered, and the control system will automatically cut off the boom hoisting. Meanwhile, the display and the buzzer will give alarm. At this moment, boom/jib luffing winch won't hoist but it can still lower down.
- When the boom down angle is less than 30° or jib down angle is less than 15°, the control system will automatically cut off the boom/jib from further lowering. Meanwhile, the display and the buzzer will give alarms. At this moment, boom/jib luffing winch won't be able to lower. This protection is automatically controlled by Load Moment Limiter.

### Back-stop Device

- The boom and the jib are respectively equipped with a pair of back-stop cylinders. The high pressure of the cylinder shall be overcome when the boom tilts backwards, and high pressure oil will be supplemented automatically when the boom swings forwards to increase the tension and prevent the boom vibration and shaking back. When the jib reaches to an angle too small with the boom, the back-stop device can prevent it tipping back.

### Hoisting Mechanism Brake

- All hoisting brakes are spring loaded normally closed disc brakes, which are featured with large braking force, maintenance-free, safe and reliable use, and long service life.

### Closed Circuit Monitoring System(zoom camera)

- High-definition camera on boom tip, on each winch, at the rear of rotating bed and dual displays consist the CCTV monitoring system, which can display four photos at the same time. Real-time monitoring of each winch mechanism wire rope reeving and circumstances around the equipment is provided to make sure the operator can understand clearly and make sure the load safety. The camera can zoom in/out as needed.
- Components of the camera: wireless remote transmitter, wireless remote receiver, zoom camera.
- The video recorder can store the monitoring video for as long as 76 hrs.
- Crane operation can be stored.





## Safety Devices

### Fault Auto-Diagnosis System

- Faults can be conveniently eliminated based on the fault code.

### Black Box

- It is able to record the operation data and machine movement, and analyze the remaining running conditions and service life of machine based on the actual performance.

### Pharos

- It is mounted on the top of the boom/jib and alerts in air during night.

### Anemometer

- It is mounted on the top of the boom/jib to monitor the wind speed in real time and display relative data on the monitor.

### Electronic Level Indicator

- It displays the tilting angle of the crane on the monitor in real time and protects the safe operation of the crane.

### Lightning Protection Device

- It includes the lightning protection device and the surge protection device, which can effectively protect the electric system elements and workers from lightning.

### Boom Angle Indicator

- It is a pendulum-type angle indicator fixed on one side of the boom base.

### Hook Latch

- The lifting hook is installed with a baffle plate to prevent wire rope from falling off.

### Swing and Traveling Alarm

- During swing and traveling, the alarm horn will be blown per certain frequency to alert the personnel around the crane. The horn can be shut off through the display.

### Function Lock

- The operation will be locked by pulling up the function locking lever on the right side of the seat inside the driver's cab or when the operator left the seat, after which no operating handles will be working so that improper operation caused by the body collision when getting on and off the crane can be avoided.

### Regulation of Engine Power Ultimate Load and Stalling Protection

- The controller can monitor the engine power so as to prevent stalling.

### Remote Monitoring System

- It monitors and analyzes the operation data so as to realize remote diagnosis of faults and timely solution.

### Proactive Safety Control Technology

- Reduce the slewing speed automatically based on boom length and make it safer;
- Flexible safety protection: reduce the action speed when approaching safety limit, making it stable and reliable;
- Real-time monitor of hydraulic oil temperature. Limit the activity according to hydraulic temperature and protect the hydraulic components effectively;
- In man-machine interface, this protection can be set valid or invalid, and provide more human-friendly design.



**SCA2600A**  
**LATTICE BOOM CRAWLER CRANE**  
**300 UST (272.2 TONS) LIFTING CAPACITY**

## Technical Parameters

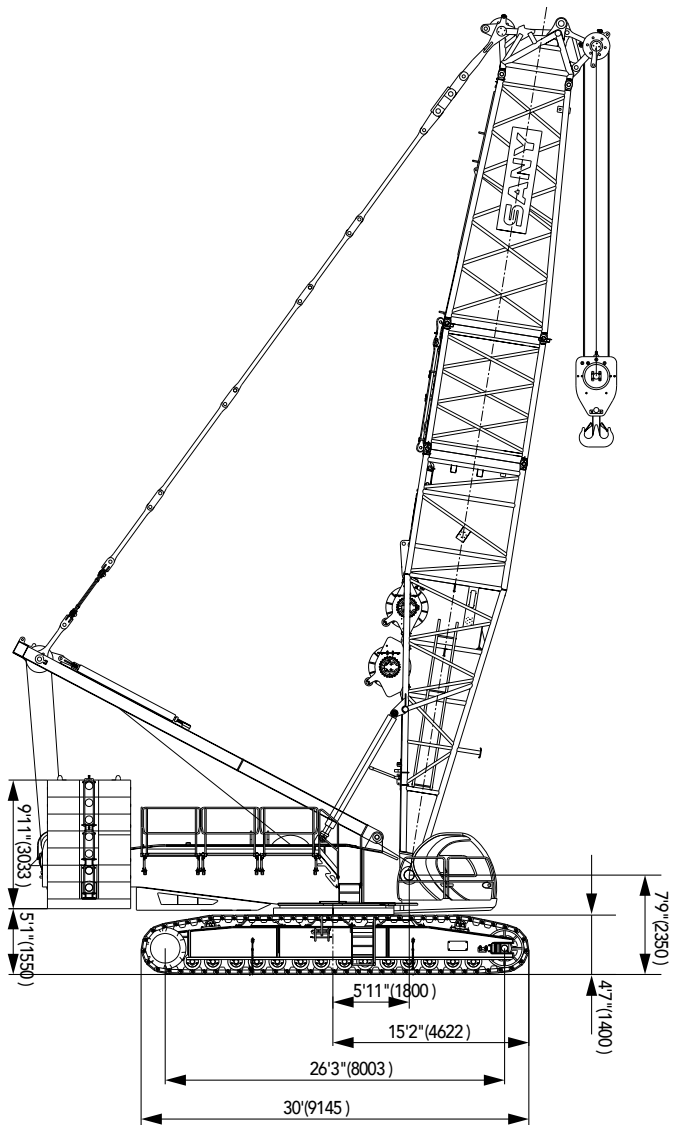
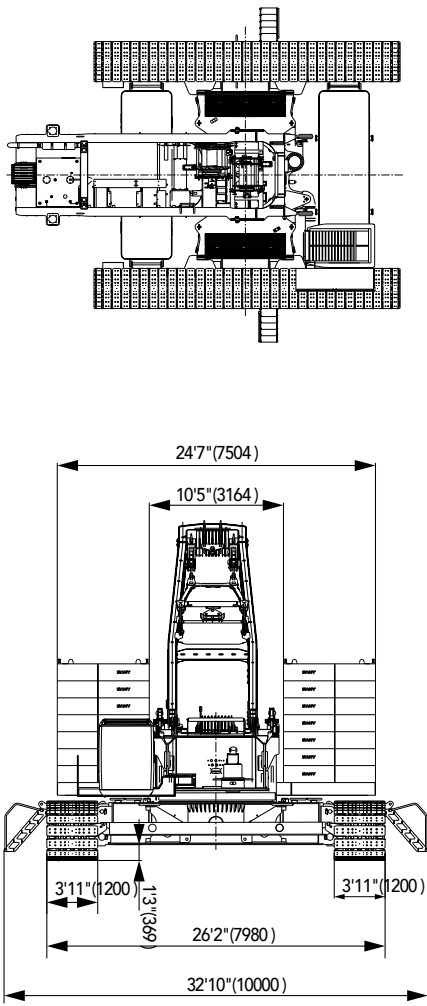
- Page 11 Main Performance Parameters
- Page 12 Outline Dimension
- Page 13 Transport Dimensions
- Page 18 Transport Plan
- Page 21 Schematics for Assembly/Disassembly

> 10

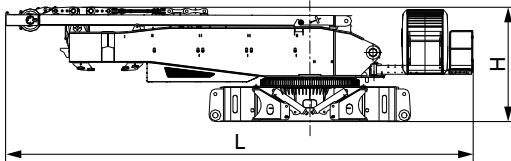
## Main Performance Parameters

Major Performance Specifications of SCA2600A			
Performance Indicators		Unit	Parameter
H Configuration	Max. rated lifting capacity	Klb (t)	600 (272.2)
	Max. rated lifting moment	Klb×ft (t·m)	405.2Klb×26ft (183.8×8=1470)
	Boom length	ft (m)	65.6~301.8 (20~92)
	Boom angle	°	30°~85°
FJ Configuration	Longest boom + longest fixed jib	ft (m)	203.4+137.8 (62+42)
	Boom to jib angle	°	10°, 30°
Heavy Fixed Jib	Boom + fixed jib (Shield Application)	ft m	65.6+39.4 (23.0) 20+12 (7)
	Boom to jib angle	°	20
Luffing Jib	Largest lifting moment	lbs·ft (t·m)	137,786×59=8,129,374 (62.5×18=1125)
	Longest boom + longest luffing jib	ft (m)	203.4+206.7 (62~63)
	Boom luffing angle	°	65°~88°
Speed	Speed of single rope of the main hoist (outermost work layer)	ft/min (m/min)	0~410.1 (0~125)
	Max. (aux.) speed of single rope of the main hoist (free fall) (optional)	ft/min (m/min)	0~383.9 (0~117)
	Boom hoist winch speed (outermost layer)	ft/min (m/min)	0~433.1 (0~132)
	Jib hoist winch speed (outermost layer)	ft/min (m/min)	0~252.6 (0~77)
	Slewing speed	rpm	0~1.8
	Travel speed	mile/h (km/h)	0.62 (0~1.0)
	Gradeability	-	30%
Machine Weight	Basic boom, 100t rear counterweight, 40t carbody counterweight, 286USt hook block	Klb (t)	549 (249)
Engine	Output power	kW	336@1800rpm
	Rated speed	hp	450
Transport	Max. transport weight of single part (with main and aux. hoist winches)	Klb (t)	99.2 (45)
	Max. transport dimension of single part (L × W × H)	ft (mm)	43.7×9.8×10.5 (13320×3000×3200)
	Average ground pressure	kgf/cm <sup>2</sup> (psi)	1.4 (20.3)

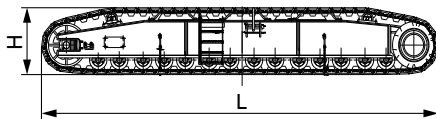
**Outline Dimension**



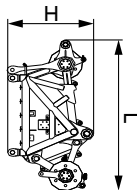
**Transport Dimensions**



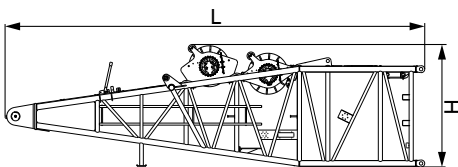
Basic machine		×1
Length (L)	43.7ft (13.32m)	
Width (W)	9.8ft (3.0m)	
Height (H)	10.5ft (3.20m)	
Weight	99.2Klb (45t)	



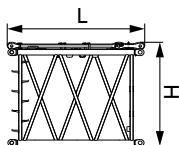
Crawler assembly		×2
Length (L)	30.0ft (9.15m)	
Width (W)	3.9ft (1.20m)	
Height (H)	4.6ft (1.40m)	
Weight	48.5Klb (22t)	



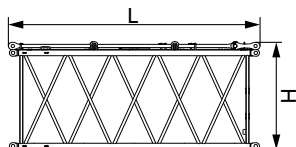
Boom tip (with sheave block)		×1
Length (L)	10.6ft (3.24m)	
Width (W)	6.8ft (2.07m)	
Height (H)	5.3ft (1.62m)	
Weight	7.7Klb (3.5t)	



Boom base (with winch)		×1
Length (L)	34.0ft (10.35m)	
Width (W)	8.5ft (2.60m)	
Height (H)	9.8ft (2.99m)	
Weight	29.9Klb (13.58t)	



9.8ft (3m) boom insert		×1
Length (L)	10.4ft (3.18m)	
Width (W)	8.7ft (2.65m)	
Height (H)	8.7ft (2.66m)	
Weight (with auxiliary luffing hoist)	2.9Klb (1.3t)	

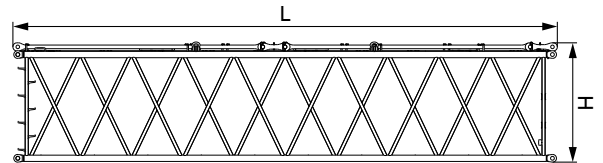


19.7ft (6m) boom insert		×2
Length (L)	20.3ft (6.18m)	
Width (W)	8.7ft (2.65m)	
Height (H)	8.7ft (2.66m)	
Weight	4.4Klb (2.0t)	

## Transport Dimensions

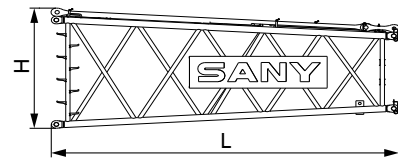
### 39.4ft (12m) boom insert ×5

Length (L)	40.0ft (12.18m)
Width (W)	8.7ft (2.65m)
Height (H)	8.7ft (2.66m)
Weight	7.9Klb (3.6t)



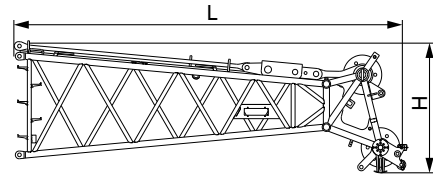
### 19.7ft (6m) tapered boom insert ×1

Length (L)	20.3ft (6.20m)
Width (W)	8.7ft (2.65m)
Height (H)	8.7ft (2.66m)
Weight	4.4Klb (2.0t)



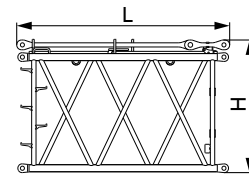
### Luffing jib top ×1

Length (L)	21.2ft (6.46m)
Width (W)	7.0ft (2.12m)
Height (H)	6.9ft (2.10m)
Weight	5.3Klb (2.4t)



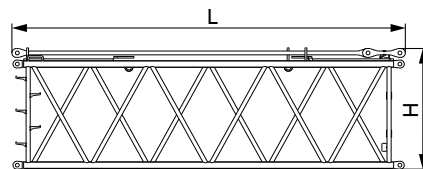
### 9.8ft (3m) luffing jib insert ×1

Length (L)	10.4ft (3.17m)
Width (W)	7.0ft (2.12m)
Height (H)	6.3ft (1.91m)
Weight	1.4Klb (0.63 t)



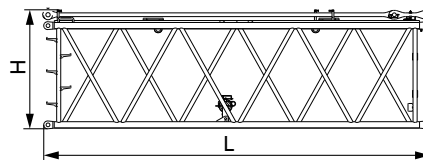
### 19.7ft (6m) luffing jib insert ×1

Length (L)	20.2ft (6.17m)
Width (W)	7.0ft (2.12m)
Height (H)	6.3ft (1.91m)
Weight	2.3Klb (1.04t)

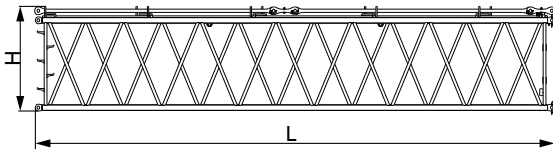


### 19.7ft (6m) luffing jib insert ×1

Length (L)	20.2ft (6.17m)
Width (W)	7.0ft (2.12m)
Height (H)	6.3ft (1.91m)
Weight	2.3Klb (1.05t)

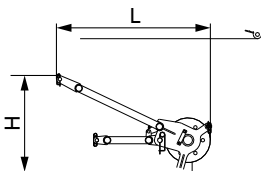


## Transport Dimensions



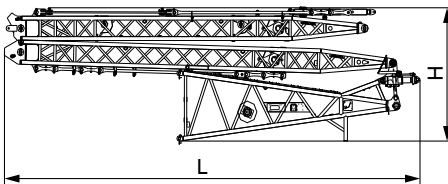
### 39.4ft (12m) luffing jib insert ×3

Length (L)	40.0ft (12.17m)
Width (W)	7.0ft (2.12m)
Height (H)	6.3ft (1.91m)
Weight	4.3Klb (1.95t)



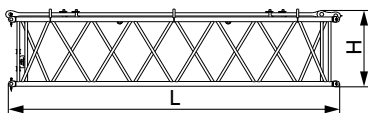
### Upper boom point ×1

Length (L)	7.2ft (2.2m)
Width (W)	3.1ft (0.95m)
Height (H)	4.7ft (1.44m)
Weight	1.0Klb (0.42t)



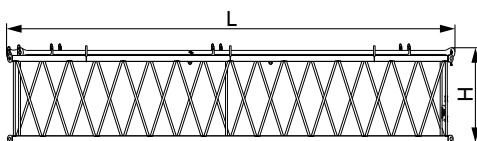
### Jib base, front and rear mast of luffing jib ×1

Length (L)	37.7ft (11.49m)
Width (W)	6.9ft (2.11m)
Height (H)	10.7ft (3.26m)
Weight	12.1Klb (5.5t)



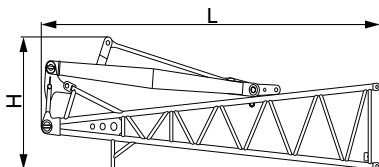
### 19.7ft (6m) fixed jib insert ×1

Length (L)	20.0ft (6.11m)
Width (W)	4.9ft (1.50m)
Height (H)	4.7ft (1.42m)
Weight	1.7Klb (0.75t)



### 37.7ft (11.5m) fixed jib insert ×1

Length (L)	38.3ft (11.67m)
Width (W)	5.0ft (1.50m)
Height (H)	4.7ft (1.42m)
Weight	2.9Klb (1.3t)



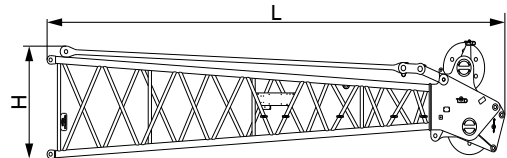
### Fixed jib base and mast ×1

Length (L)	22.0ft (6.70m)
Width (W)	4.7ft (1.42m)
Height (H)	6.6ft (2.00m)
Weight	3.7Klb (1.7t)

## Transport Dimensions

### Fixed jib top ×1

Length (L)	23.3ft (7.10m)
Width (W)	4.7ft (1.42m)
Height (H)	4.7ft (1.43m)
Weight	3.9Klb (1.75t)



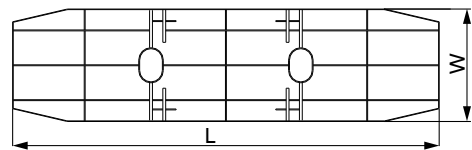
### Carbody counterweight ×2

Length (L)	18.0ft (5.48m)
Width (W)	5.6ft (1.72m)
Height (H)	2.0ft (0.60m)
Weight	44.09Klb (20t)



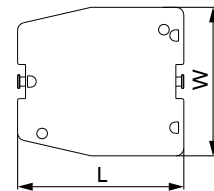
### Rear counterweight tray ×1

Length (L)	24.6ft (7.50m)
Width (W)	6.4ft (1.96m)
Height (H)	2.3ft (0.70m)
Weight	35.3Klb (16t)



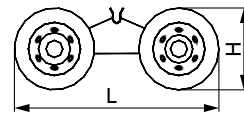
### 13.2Klb (6t) counterweight block ×14

Length (L)	7.1ft (2.17m)
Width (W)	6.4ft (1.96m)
Height (H)	1.7ft (0.51m)
Weight	13.2Klb (6t)



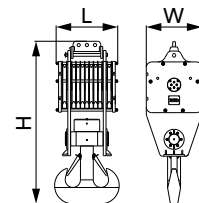
### Trolley ×1

Length (L)	8.4ft (2.56m)
Width (W)	5.7ft (1.74m)
Height (H)	3.3ft (1.00m)
Weight	2.2Klb (1t)



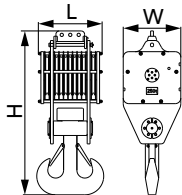
### 300Ust (272Mt) hook block ×1

Length (L)	3.7ft (1.13m)
Width (W)	3.3ft (1.02m)
Height (H)	9.8ft (2.98m)
Weight	10.9Klb (4.9t)



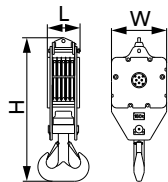


## Transport Dimensions



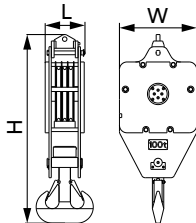
### 286.6USSt (260Mt) hook block ×1

Length (L)	3.4ft (1.04m)
Width (W)	3.3ft (1.02m)
Height (H)	9.6ft (2.93m)
Weight	11.5Klb (4.8t)



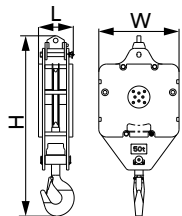
### 176.4USSt (160Mt) hook block ×1

Length (L)	1.9ft (0.59m)
Width (W)	3.3ft (1.02m)
Height (H)	8.7ft (2.64m)
Weight	7.1Klb (3.2t)



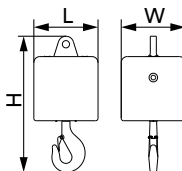
### 110.25USSt (100Mt) hook block ×1

Length (L)	1.7ft (0.51m)
Width (W)	3.3ft (1.02m)
Height (H)	8.1ft (2.48m)
Weight	5.1Klb (2.3t)



### 55.1USSt (50Mt) hook block ×1

Length (L)	1.5ft (0.45m)
Width (W)	3.3ft (1.02m)
Height (H)	7.5ft (2.30m)
Weight	3.7Klb (1.7t)



### 17.6USSt (16Mt) hookball ×1

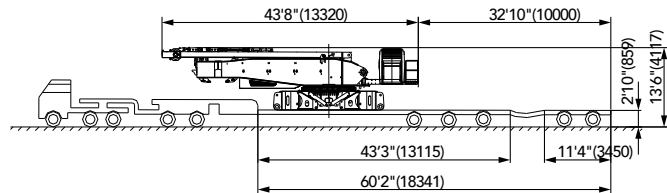
Length (L)	1.7ft (0.53m)
Width (W)	1.7ft (0.53m)
Height (H)	3.6ft (1.10m)
Weight	2.0Klb (0.9t)

#### Note:

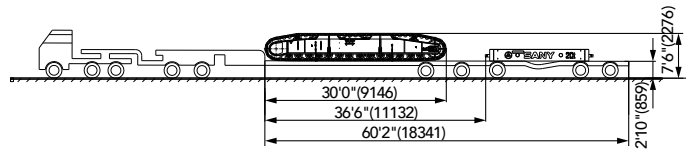
1. The transport dimensions of each part in the table are schematic, not proportional to the real parts. The dimensions are designed value without package considered.
2. Weight is designed value that the actual manufactured part may deviate a little.
3. The dimensions and weight of each part may change due to product upgrading. The final values are subject to the new product.
4. The 300 ust hook is optional.

## Transport Plan

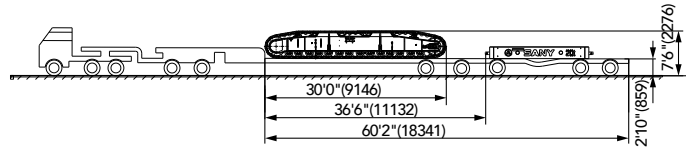
Trailer	▪ 498-16165
Rated Capacity	▪ 109.8Klb (49.8t)
Transported Parts	▪ Basic machine
Transport weight	▪ 99.2Klb (45t)
Quantity	▪ 1



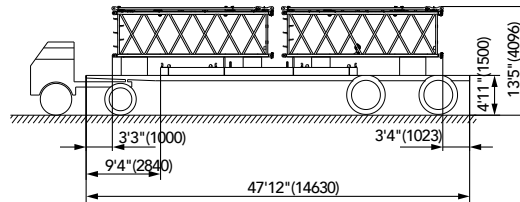
Trailer	▪ 498-16165
Rated Capacity	▪ 109.8Klb (49.8t)
Transported Parts	▪ Left track frame assembly ▪ Carbody counterweight
Transport weight	▪ 92.6Klb (42t)
Quantity	▪ 1



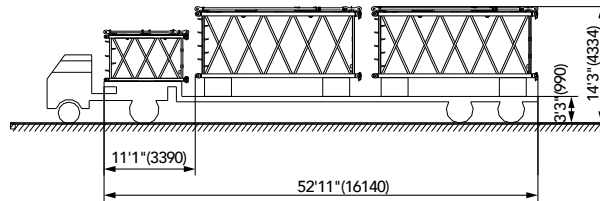
Trailer	▪ 498-16165
Rated Capacity	▪ 109.8Klb (49.8t)
Transported Parts	▪ Right track frame assembly ▪ Carbody counterweight
Transport weight	▪ 92.6Klb (42t)
Quantity	▪ 1



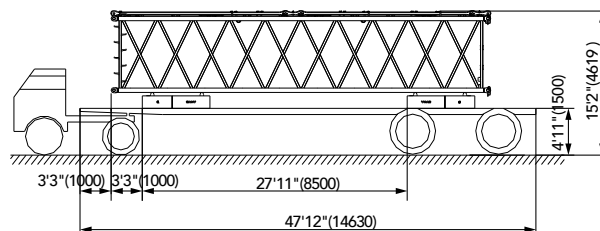
Trailer	▪ 20-14630
Rated Capacity	▪ 44.1Klb (20t)
Transported Parts	▪ Rear counterweight tray x1, ▪ 19.7ft (6m) luffing jib insert I, ▪ 19.7ft (6m) luffing jib insert
Transport weight	▪ 39.0Klb (17.7t)
Quantity	▪ 1



Trailer	▪ 20-16140
Rated Capacity	▪ 44.1Klb (20t)
Transported Parts	▪ 19.7ft (6m) boom insert x2, ▪ 9.8ft (3m) luffing jib insert x1
Transport weight	▪ 11Klb (5t)
Quantity	▪ 1

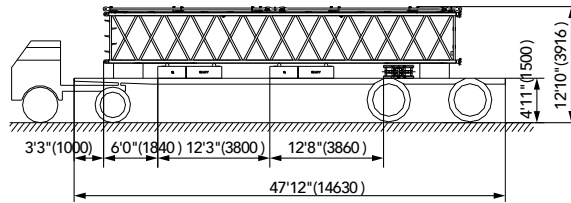


Trailer	▪ 20-14630
Rated Capacity	▪ 44.1Klb (20t)
Transported Parts	▪ CWT block x2, ▪ 39.4ft (12m) boom insert x1
Transport weight	▪ 34.6Klb (15.7t)
Quantity	▪ 5

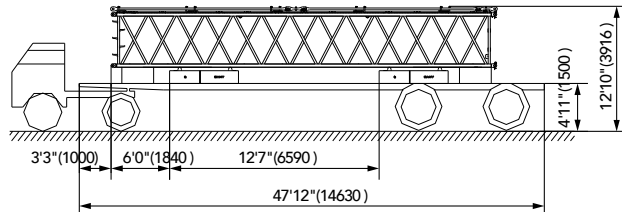


**Transport Plan**

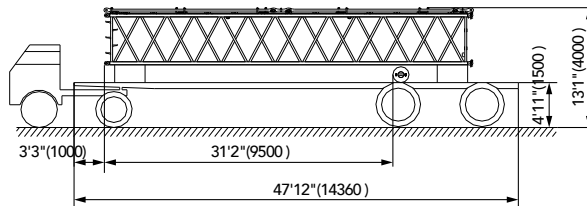
Trailer	▪ 20-14630
Rated Capacity	▪ 44.1Klb (20t)
Transported Parts	▪ CWT block ×2, ▪ 39.4ft (12m) luffing jib insert ×1, ▪ 110.2Klb (50t) hook ×1
Transport weight	▪ 33.5Klb (15.2t)
Quantity	▪ 1



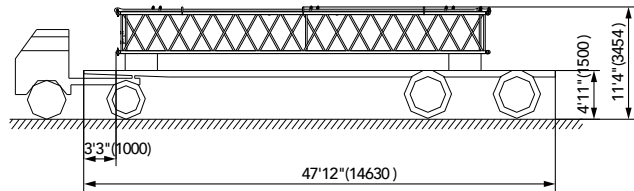
Trailer	▪ 20-14630
Rated Capacity	▪ 44.1Klb (20t)
Transported Parts	▪ CWT block ×2 ▪ 39.4ft (12m) luffing jib insert ×1
Transport weight	▪ 29.8Klb (13.5t)
Quantity	▪ 1



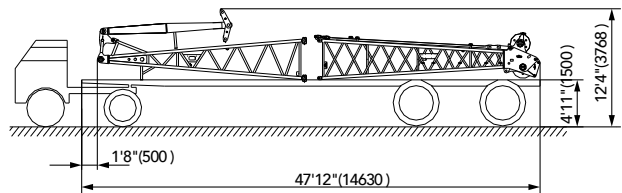
Trailer	▪ 20-14630
Rated Capacity	▪ 44.1Klb (20t)
Transported Parts	▪ 39.4ft (12m) luffing jib insert ×1 ▪ 35.3Klb (16t) hook ×1
Transport weight	▪ 6.6Klb (3t)
Quantity	▪ 1



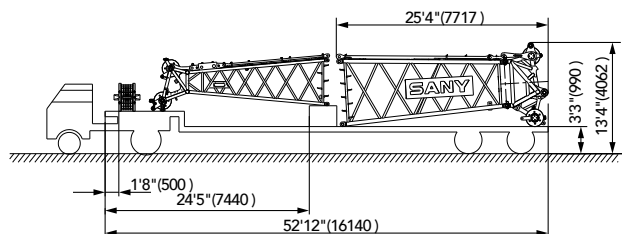
Trailer	▪ 20-14630
Rated Capacity	▪ 44.1Klb (20t)
Transported Parts	▪ 37.7ft (11.5m) fixed jib insert ×1
Transport weight	▪ 2.9Klb (1.3t)
Quantity	▪ 2



Trailer	▪ 20-14630
Rated Capacity	▪ 44.1Klb (20t)
Transported Parts	▪ Fixed jib base and mast ×1 ▪ Fixed jib top ×1
Transport weight	▪ 5.7Klb (2.6t)
Quantity	▪ 2

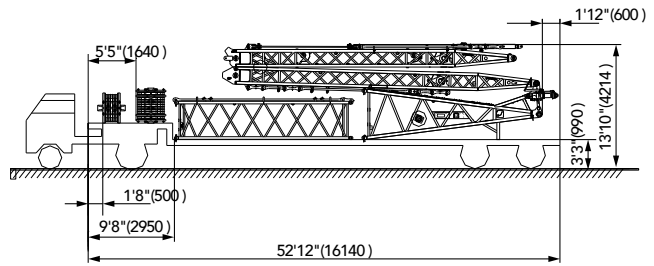


Trailer	▪ 20-16140
Rated Capacity	▪ 44.1Klb (20t)
Transported Parts	▪ 35.3Klb (160t) hook ×1 ▪ Tapered boom insert ×1 ▪ Boom top (with sheave block) ×1 ▪ Luffing jib top ×1
Transport weight	▪ 28.7Klb (13t)
Quantity	▪ 1

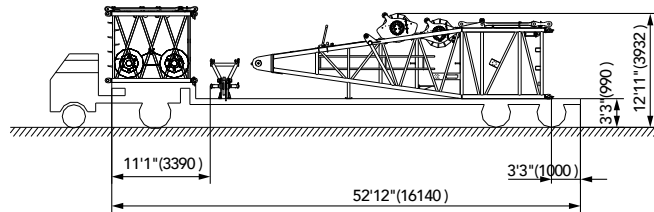


## Transport Plan

Trailer	▪ 20-16140
Rated Capacity	▪ 44.1Klb (20t)
Transported Parts	<ul style="list-style-type: none"> <li>▪ Luffing jib base and front and rear mast combo ×1,</li> <li>▪ 220.5Klb (100t) hook ×1,</li> <li>▪ 573.2Klb (260t) hook ×1,</li> <li>▪ 19.7ft (6m) fixed jib insert ×1.</li> </ul>
Transport weight	▪ 29.8Klb (13.5t)
Quantity	▪ 1



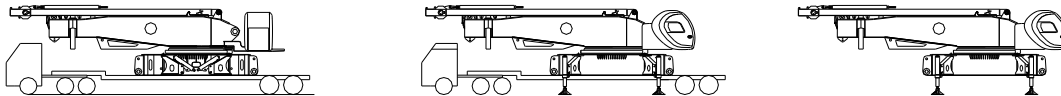
Trailer	▪ 20-16140
Rated Capacity	▪ 44.1Klb (20t)
Transported Parts	<ul style="list-style-type: none"> <li>▪ Boom base ×1,</li> <li>▪ 9.8ft (3m) boom insert ×1,</li> <li>▪ Upper boom point ×1,</li> <li>▪ Trolley ×1</li> </ul>
Transport weight	▪ 36.8Klb (16.7t)
Quantity	▪ 1



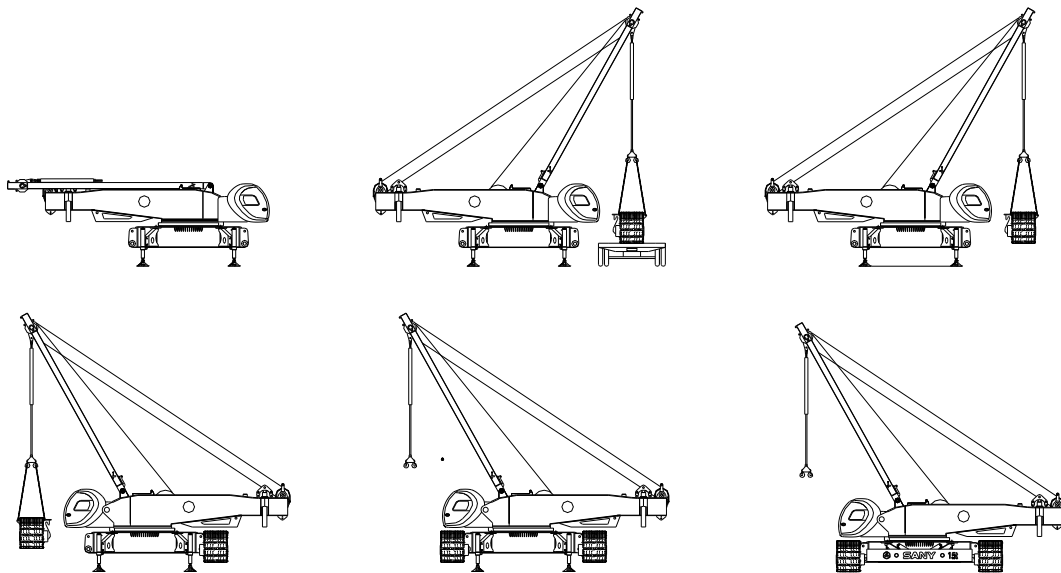
## Schematics for Assembly/Disassembly

### Schematics for self-assembly of basic machine

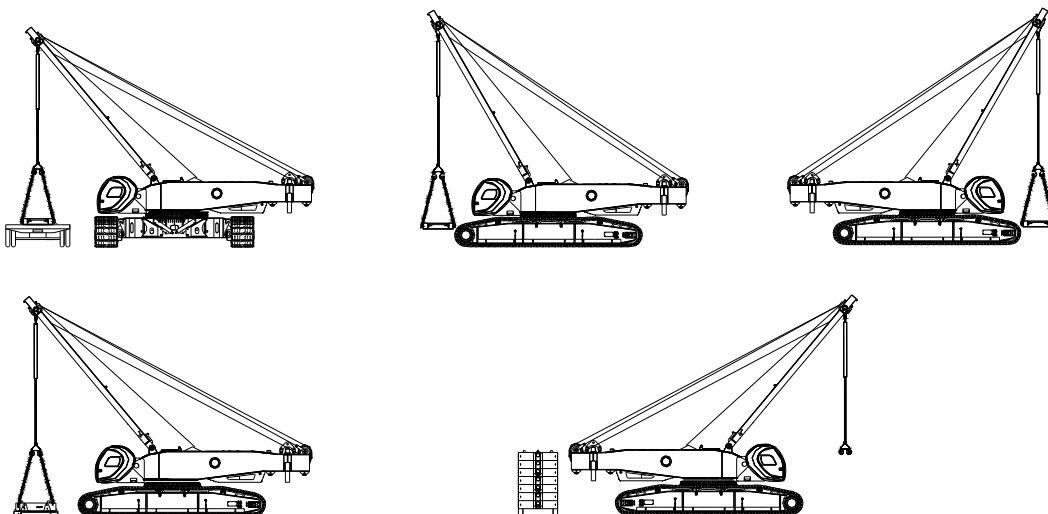
#### 1) Self-assembly of basic machine



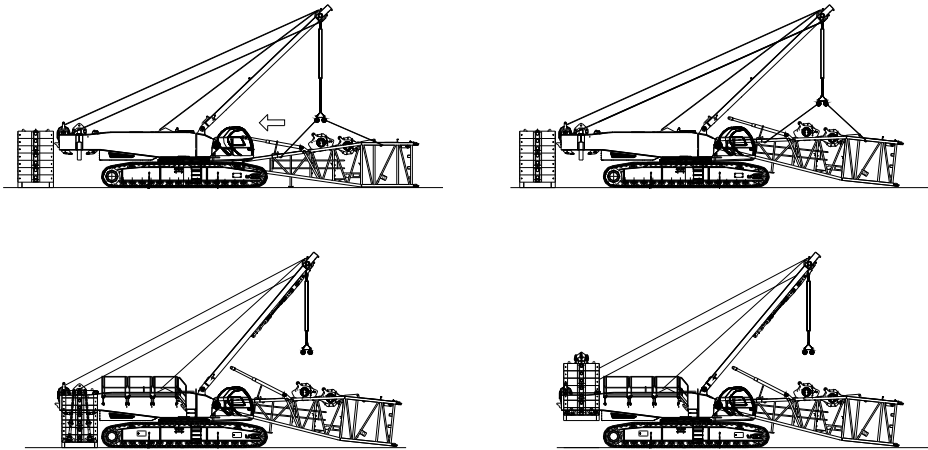
#### 2) Self-assembly of track frame



#### 3) Self-assembly of counterweight and boom base

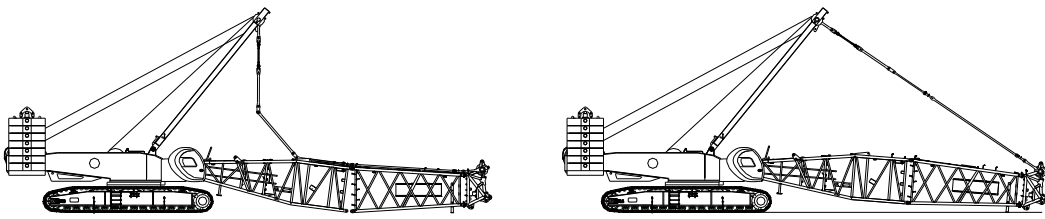


## Schematics for Assembly/Disassembly

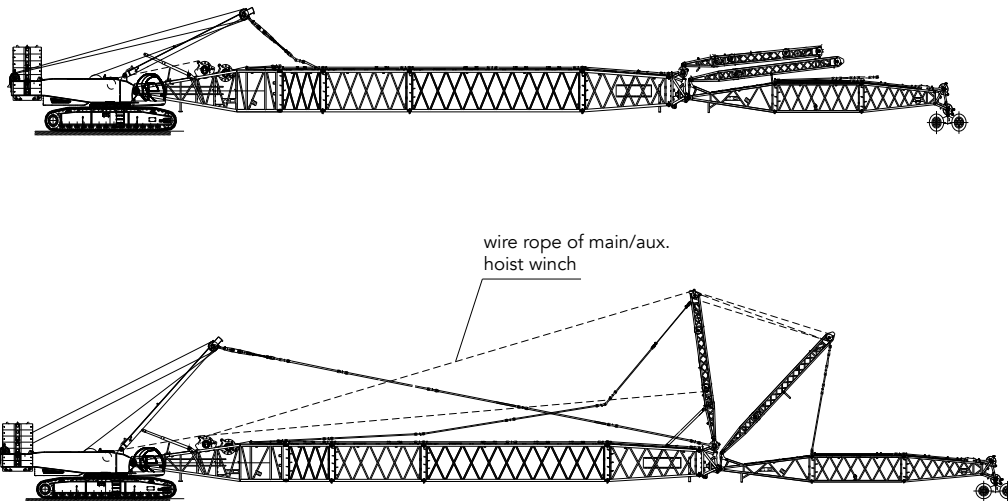


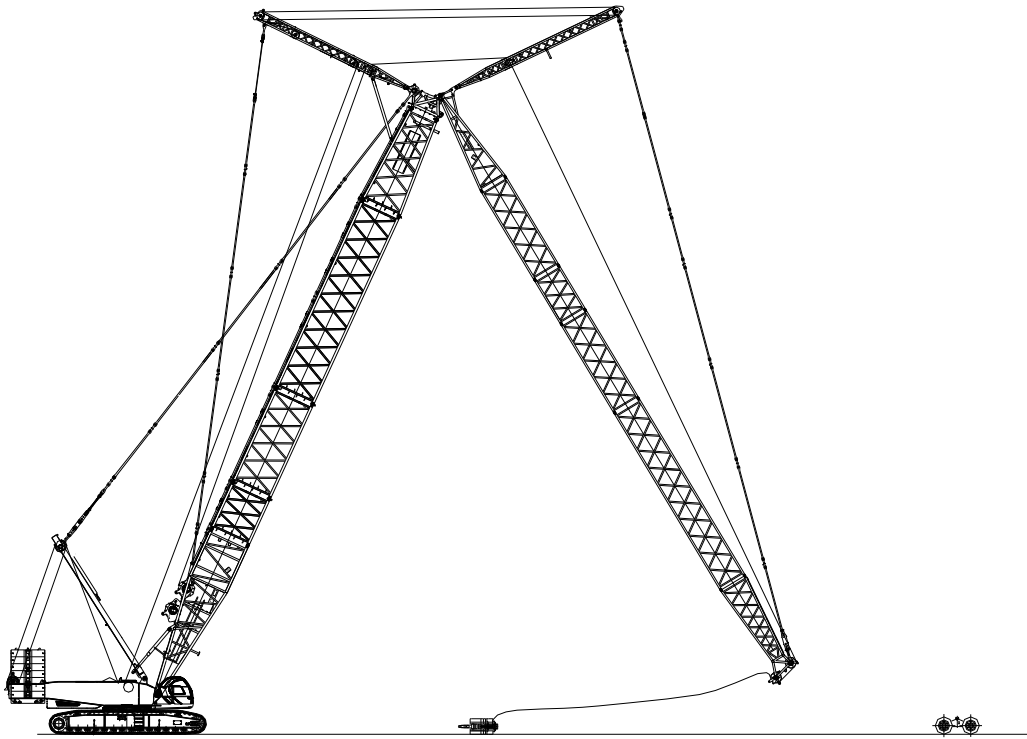
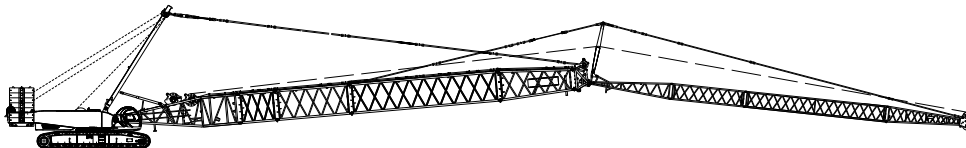
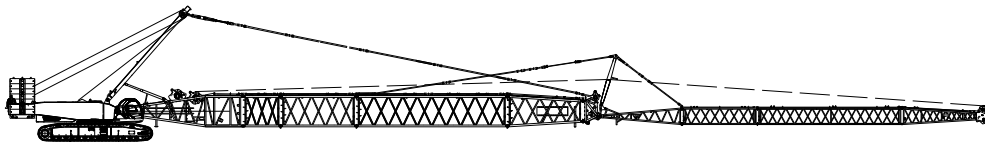
### Schematics of boom assembly

#### 1) Boom assembly



#### 2) Luffing jib assembly



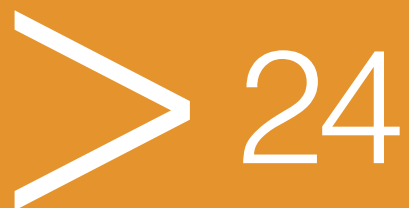
**Schematics for Assembly/Disassembly****3) Fixed jib assembly**



**SCA2600A**  
**LATTICE BOOM CRAWLER CRANE**  
**300 UST (272.2 TONS) LIFTING CAPACITY**

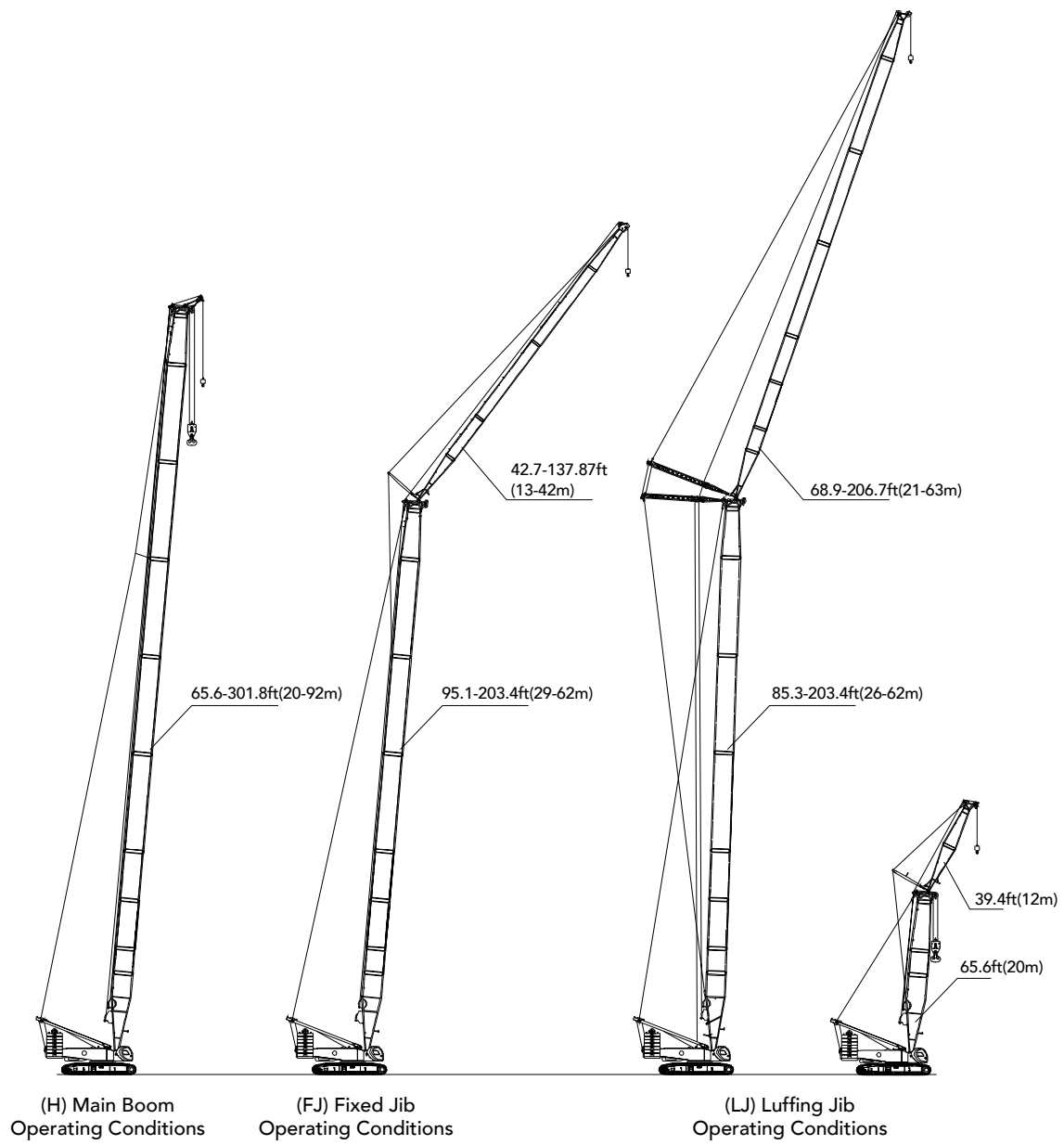
## Boom and Jib Combinations

- Page 26 (H) Main Boom Operating Conditions
- Page 36 (FJ) Fixed Jib Operating Conditions
- Page 44 (LJ) Luffing Jib Operating Conditions
- Page 81 Shield Operating Conditions





**Boom and Jib Combinations**

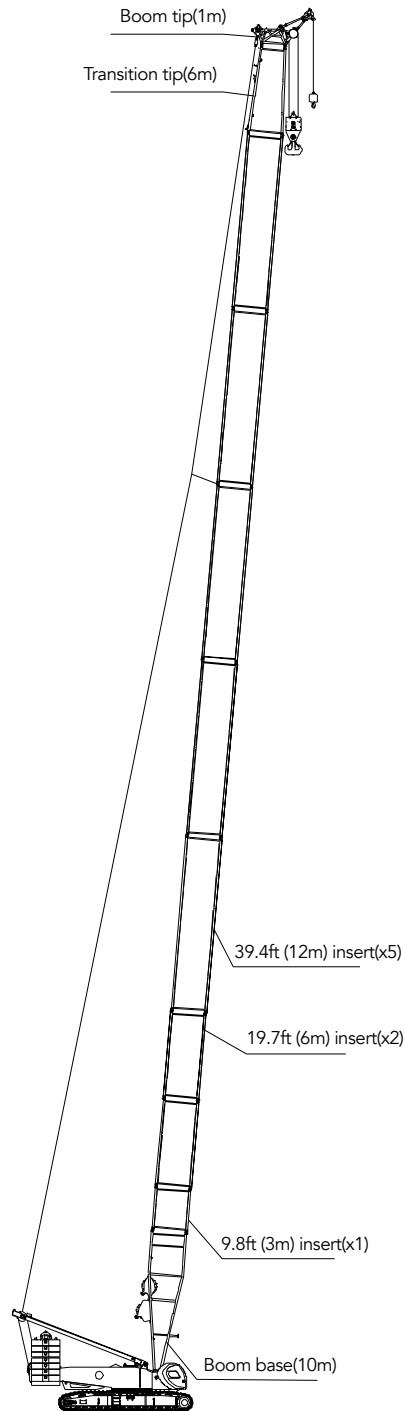


## (H) Main Boom Operating Conditions

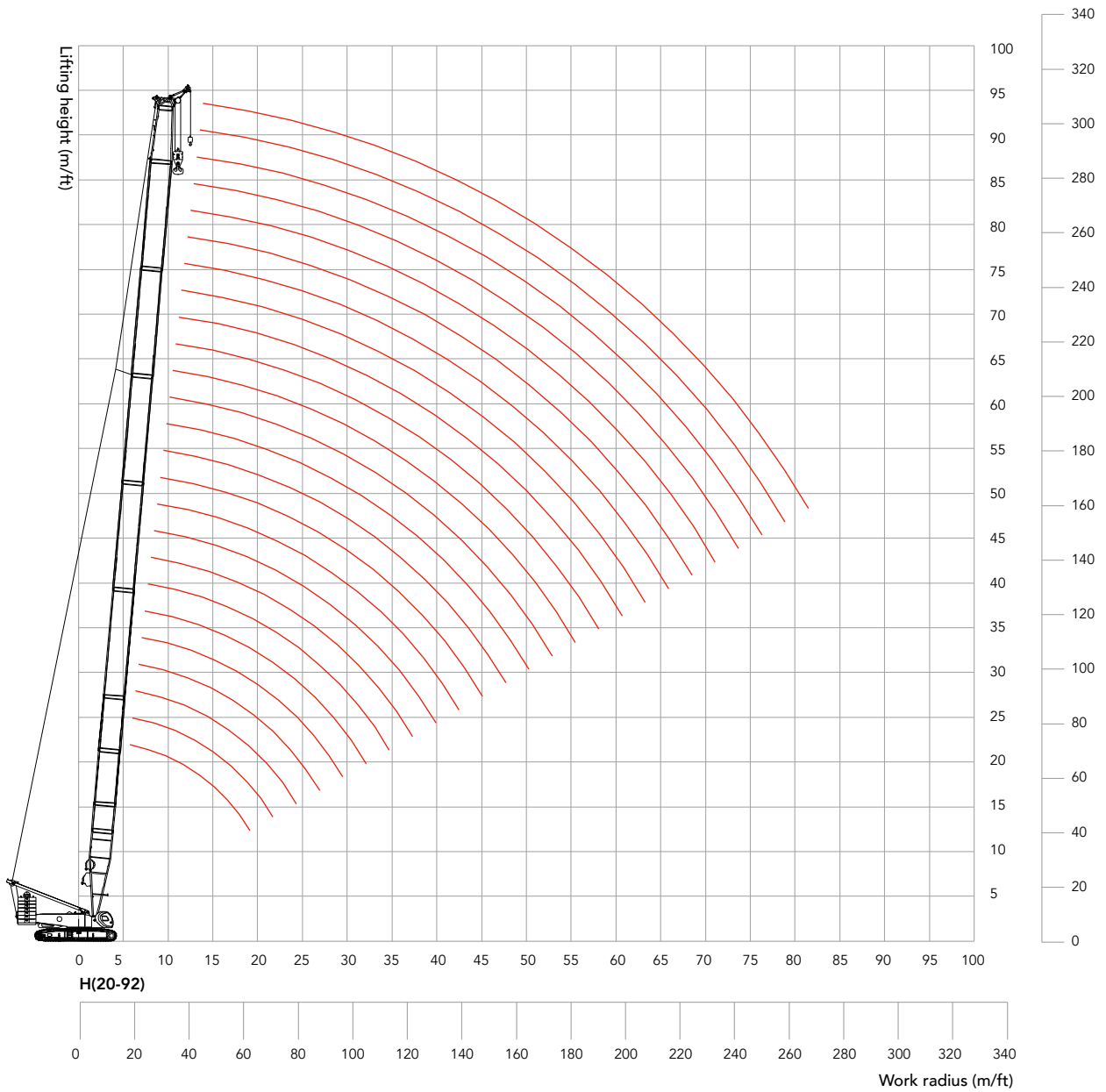
(H) Main Boom Operating Conditions

Boom length (m)	Insert		
	9.8ft(3m)	19.7ft(6m)	39.4ft(12m)
65.6(20)	1	-	-
75.5(23)	-	1	-
85.3(26)	1	1	-
95.1(29)	-	-	1
105(32)	1	-	1
114.8(35)	-	1	1
124.7(38)	1	1	1
134.5(41)	-	-	2
144.4(44)	1	-	2
154.2(47)	-	1	2
164(50)	1	1	2
173.9(53)	-	-	3
183.7(56)	1	-	3
193.6(59)	-	1	3
203.4(62)	1	1	3
213.3(65)	-	-	4
223.1(68)	1	-	4
232.9(71)	-	1	4
242.8(74)	1	1	4
252.6(77)	-	-	5
262.5(80)	1	-	5
272.3(83)	-	1	5
282.2(86)	1	1	5
291.9(89)	-	2	5
301.8(92)	1	2	5

Note: 65.6ft(20m) basic boom consists of 32.8ft(10m) boom section, 9.8ft(3m) boom insert, 19.7ft(6m) transition section and 1m boom head.



**(H) Main Boom Range Diagram**





Unit: Klb

**(H) Main Boom Load Chart**

Rear counterweight 220,500 lbs, Carbody counterweight 88,200 lbs, 360° Capacity x (1000lbs)													
Radius (ft)	Boom length (ft)												Radius (ft)
	193.6	203.4	213.3	223.1	232.9	242.8	252.6	262.5	272.3	282.2	292	301.8	
16.4													16.4
20													20
25													25
30	243.3	215.0	215.0										30
35	196.3	195.2	188.3	184.3	171.6	169.2	166.8						35
40	190.2	186.5	167.6	160.2	147.3	139.8	132.0	130.6	128.5	128.3	126.3	119.5	40
45	174.2	168.4	162.2	158.6	144.2	133.9	122.7	116.8	115.3	113.0	112.7	104.2	45
50	156.6	152.4	149.3	146.2	139.3	125.3	117.2	109.3	107.8	104.7	99.3	93.2	50
55	140.6	137.7	135.1	132.3	130.2	119.3	111.0	103.9	102.5	95.6	87.2	81.8	55
60	126.9	124.2	121.9	119.5	117.5	114.9	104.0	99.4	97.3	85.0	77.0	70.3	60
65	115.2	112.7	110.6	108.4	106.7	104.5	101.5	95.2	87.9	79.7	69.5	64.2	65
70	105.4	103.1	101.2	99.2	97.6	95.4	93.7	90.0	82.7	73.5	62.7	58.0	70
75	96.6	94.5	92.8	90.8	89.4	87.3	85.7	83.7	79.1	69.8	59.0	54.2	75
80	88.9	86.9	85.4	83.4	82.1	80.2	78.6	76.9	75.6	67.5	57.6	52.2	80
85	82.2	80.2	78.9	76.9	75.8	74.0	72.5	70.7	69.6	63.5	55.9	50.1	85
90	76.3	74.5	73.0	71.3	70.2	68.5	67.0	65.3	64.2	61.2	54.1	48.6	90
95	70.4	69.2	67.7	66.1	65.0	63.3	61.9	60.3	59.2	57.6	52.2	47.3	95
100	64.8	64.1	62.9	61.2	60.3	58.7	57.3	55.8	54.7	53.2	50.1	46.0	100
105	59.7	59.1	58.4	56.9	56.0	54.5	53.1	51.6	50.7	49.2	47.8	44.3	105
110	55.3	54.7	54.2	53.0	52.1	50.6	49.4	47.8	47.0	45.4	44.3	42.3	110
115	51.3	50.7	50.2	49.3	48.6	47.1	46.0	44.4	43.5	42.1	41.0	39.5	115
120	47.6	47.0	46.5	45.7	45.2	43.8	42.7	41.2	40.3	39.0	37.9	36.4	120
125	44.3	43.5	43.0	42.3	41.9	40.8	39.7	38.2	37.5	36.0	34.9	33.5	125
130	41.3	40.8	39.9	39.2	38.8	38.0	37.0	35.5	34.8	33.3	32.3	30.8	130
135	38.9	38.5	37.3	36.6	36.1	35.2	34.5	32.9	32.3	30.8	29.8	28.4	135
140	36.8	36.3	34.9	34.3	33.7	32.6	32.1	30.6	29.9	28.6	27.5	26.2	140
145	34.8	33.9	32.6	32.1	31.7	30.1	29.7	28.5	27.8	26.4	25.4	24.1	145
150	32.4	31.4	30.6	29.9	29.5	28.0	27.5	26.4	25.8	24.2	23.3	22.0	150
155	30.6	29.7	28.7	28.3	27.9	25.9	25.5	24.4	23.7	22.3	21.4	20.1	155
160	29.0	28.0	27.0	26.8	26.2	24.0	23.5	22.6	21.9	20.6	19.7	18.4	160
165	27.3	26.2	25.4	25.0	24.3	22.2	21.5	20.8	20.2	18.9	18.0	16.7	165
170	25.6	24.5	23.3	22.9	22.2	20.5	19.8	18.9	18.5	17.2	16.3	15.0	170
175		23.1	22.4	21.5	20.0	18.8	18.3	17.4	17.0	15.7	14.8	13.5	175
180			21.1	20.3	19.1	17.2	16.8	15.9	15.6	14.2	13.3	12.0	180
185				19.0	18.8	15.7	15.3	14.4	14.2	12.9	12.0	10.7	185
190				17.5	17.3	14.4	14.0	13.1	12.9	11.6	10.7	9.4	190
195				16.0	15.9	13.2	12.6	11.7	11.5	10.3	9.4	8.1	195
200					14.3	11.9	11.4	10.5	10.3	9.2	8.3	7.0	200
205						10.7	10.2	9.4	9.1	8.0	7.1	5.9	205
210							9.7	9.0	8.4	7.9	6.8	4.9	210
215								8.0	7.2	6.9	5.8	4.9	215
220								7.0	6.1	5.9			220









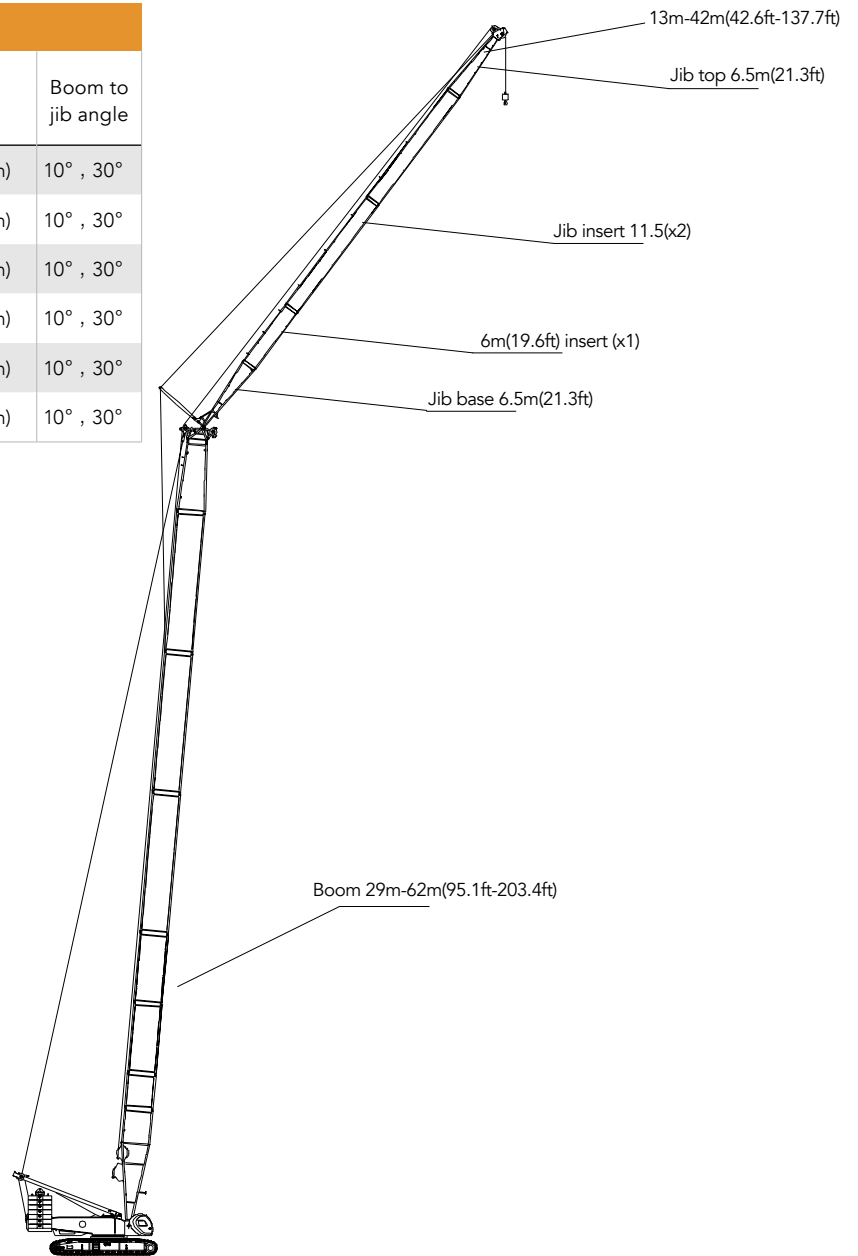




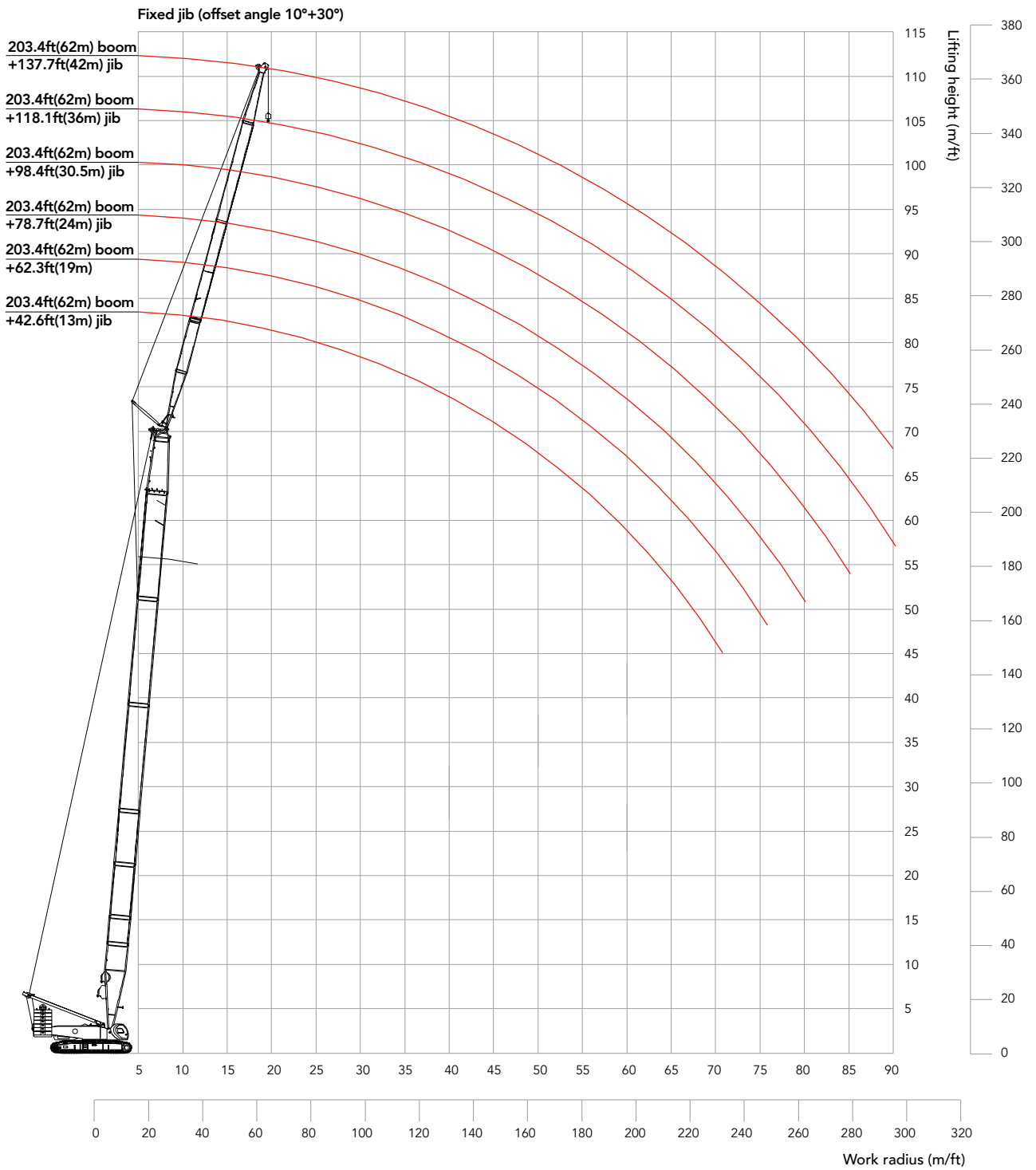


**(FJ) Fixed Jib Operating Conditions**

<b>(FJ) Fixed Jib Operating Conditions</b>				
Jib Length ft(m)	Insert		Boom Length ft(m)	Boom to jib angle
	16.7ft (6m)	37.7ft (11.5m)		
13(42.6)	-	-	95.1ft(29m)~203.4ft(62m)	10° , 30°
19(62.3)	1	-	95.1ft(29m)~203.4ft(62m)	10° , 30°
24.5(80.4)	-	1	95.1ft(29m)~203.4ft(62m)	10° , 30°
30.5(100)	1	1	95.1ft(29m)~203.4ft(62m)	10° , 30°
36(118.1)	-	2	95.1ft(29m)~203.4ft(62m)	10° , 30°
42(137.8)	1	2	95.1ft(29m)~203.4ft(62m)	10° , 30°



**(FJ) Fixed Jib Range Diagram**





Unit: Klb

**(FJ) Fixed Jib Load Chart**

Rear counterweight 220,500 lbs, Carbody counterweight 88,200 lbs, 360° Capacity x (1000lbs)													
Fixed jib length	42.7 ft												Fixed jib length
Boom length	154.2ft		164ft		173.9ft		183.7ft		193.6ft		203.4ft		Boom length
Offset Angle	10°	30°	10°	30°	10°	30°	10°	30°	10°	30°	10°	30°	Offset Angle
Radius (ft)													Radius (ft)
30													30
35													35
40	140.4		140.6		129.2		129.0						40
45	132.1		129.8		125.9		123.8						45
50	119.4		116.9		114.7		112.5		110.4		108.2		50
55	107.2	60.5	105.1	60.9	103.1	61.5	101.1	61.9	99.3		97.3		55
60	96.8	58.6	95.0	59.0	93.2	59.7	91.3	60.1	89.8	60.5	87.9	60.8	60
65	88.1	56.6	86.3	57.3	84.7	58.0	83.0	58.4	81.5	58.8	79.9	59.3	65
70	80.7	55.1	79.0	55.8	77.5	56.3	79.2	56.9	77.8	57.3	79.3	57.8	70
75	76.0	53.6	74.4	54.2	73.1	54.8	74.3	55.3	73.0	55.9	75.9	56.3	75
80	73.5	52.1	71.9	52.8	69.9	53.4	69.1	53.9	68.3	54.5	70.5	55.0	80
85	71.1	50.8	69.6	51.5	64.5	52.1	66.6	52.8	67.7	53.2	67.9	53.9	85
90	69.1	49.4	66.4	50.3	62.9	50.9	64.5	51.6	66.5	52.2	67.8	52.7	90
95	65.2	48.3	63.0	49.1	60.9	49.7	62.4	50.4	64.6	51.1	64.8	51.6	95
100	61.3	47.2	59.2	48.0	59.5	48.6	60.3	49.3	61.7	50.0	60.1	50.6	100
105	59.5	46.1	55.2	47.0	60.0	47.6	58.4	48.3	57.3	48.9	55.8	49.6	105
110	55.1	45.3	55.8	45.9	55.9	46.6	54.3	47.5	53.4	47.9	51.9	48.6	110
115	51.3	44.4	53.3	45.0	52.2	45.7	50.7	46.5	49.8	47.0	48.3	47.7	115
120	48.4	43.6	49.6	44.2	48.7	44.9	47.3	45.6	46.4	46.2	44.9	46.5	120
125	46.8	42.7	46.1	43.4	45.4	44.1	44.3	44.9	43.2	45.2	41.9	44.6	125
130	43.7	41.9	42.9	42.7	42.4	43.4	41.3	43.4	40.4	42.7	39.1	41.5	130
135	40.8	41.2	40.1	41.1	39.5	41.2	38.7	40.7	37.8	40.1	36.5	38.8	135
140	38.1	39.6	37.5	38.9	36.8	38.5	36.2	37.8	35.4	37.5	34.1	36.2	140
145	35.6	37.0	35.0	36.3	34.3	35.9	33.7	35.2	33.0	35.0	31.7	33.7	145
150	33.5	34.6	32.6	33.9	32.1	33.5	31.3	32.8	30.8	32.6	29.5	31.5	150
155	31.3	32.4	30.5	31.7	30.0	31.3	29.1	30.6	28.8	30.4	27.5	29.3	155
160		30.2	28.5	29.6	28.0	29.2	27.1	28.5	26.8	28.3	25.5	27.2	160
165			26.5	27.6	26.1	27.2	25.2	26.5	24.8	26.3	23.7	25.3	165
170			24.7	25.6	24.2	25.3	23.3	24.7	23.1	24.2	22.0	23.6	170
175					22.5	23.5	21.8	22.8	21.4	22.5	20.5	21.9	175
180							20.3	21.2	19.8	20.9	19.0	20.3	180
185								19.7	18.4	19.4	17.5	18.6	185
190								18.0	17.1	18.0	16.2	17.1	190
195										16.5	14.8	15.7	195
200												14.3	200









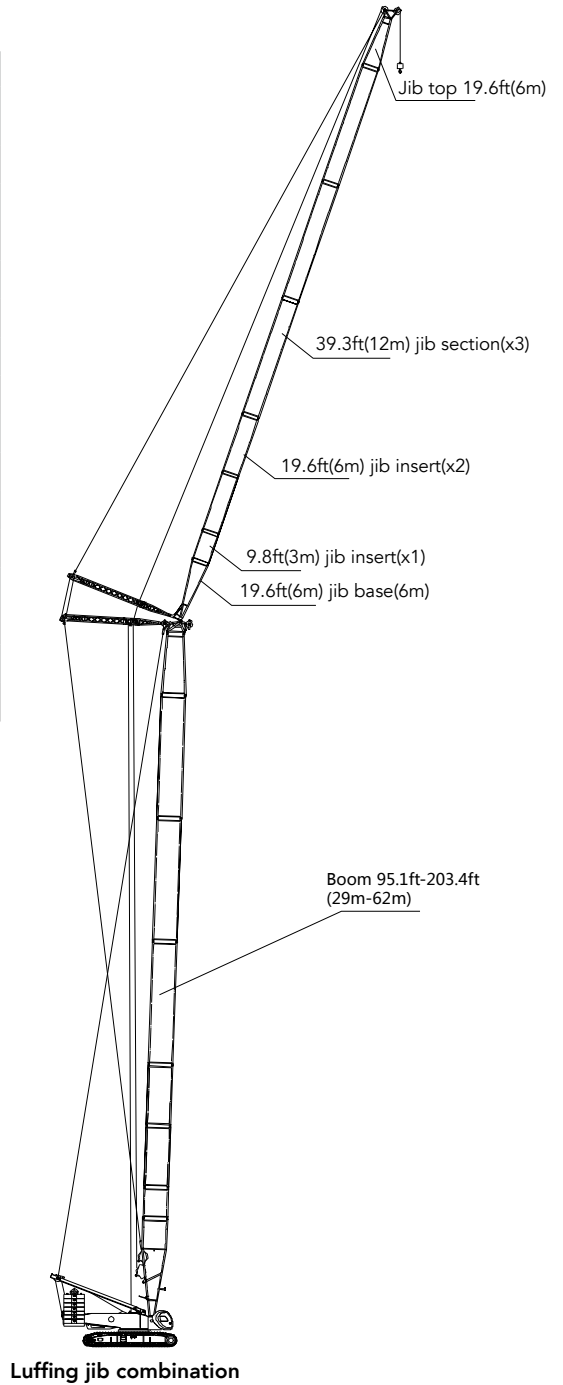
Unit: Klb

**(FJ) Fixed Jib Load Chart**

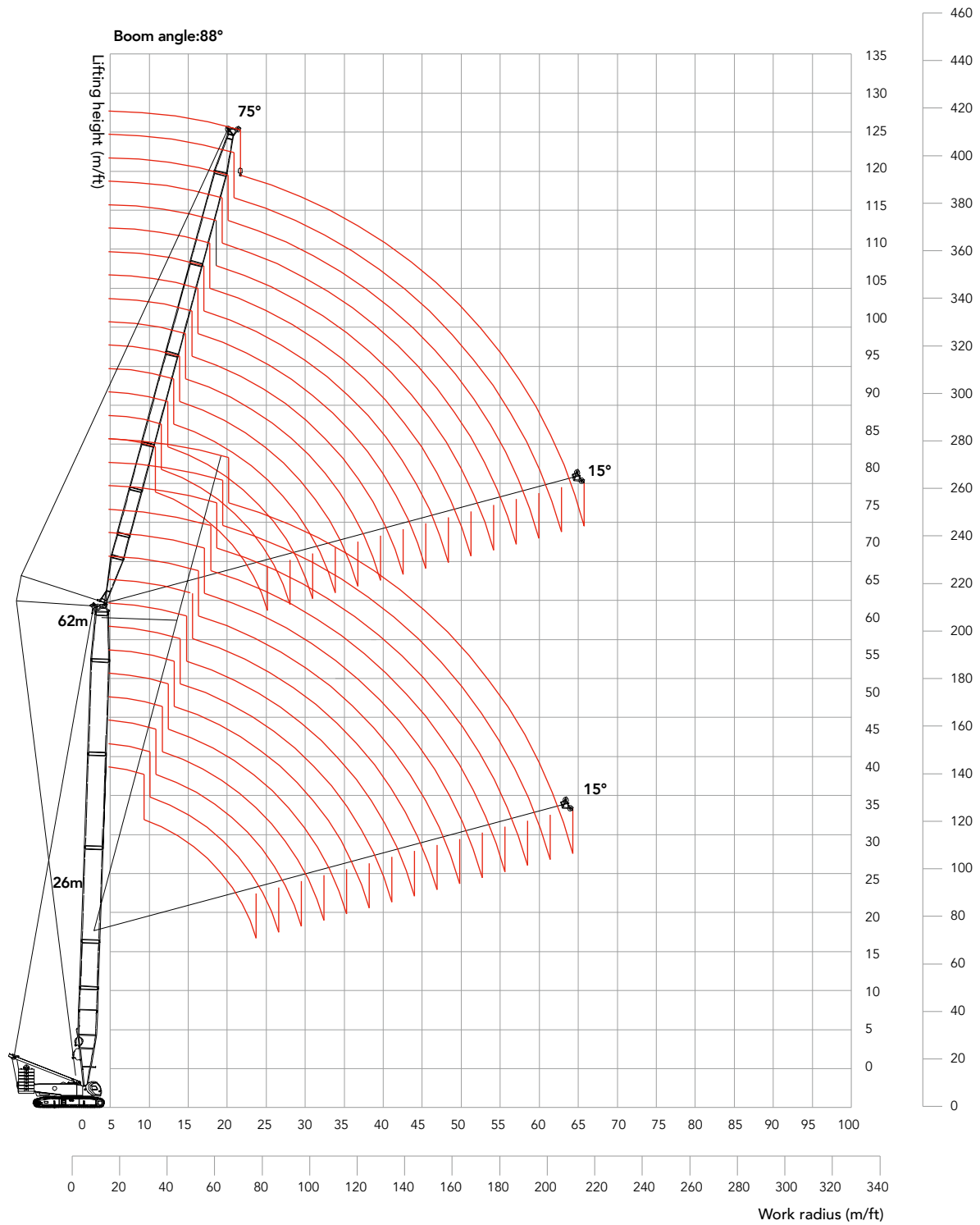
Rear counterweight 220,500 lbs, Carbody counterweight 88,200 lbs, 360° Capacity x (1000lbs)														
Fixed jib length	137.8 ft												Fixed jib length	
Boom length	154.2ft		164ft		173.9ft		183.7ft		193.6ft		203.4ft		Boom length	
Offset Angle	10°	30°	10°	30°	10°	30°	10°	30°	10°	30°	10°	30°	Offset Angle	
Radius (ft)													Radius (ft)	
60													60	
65													65	
70	35.2		35.0		34.7		36.6						70	
75	34.6		34.4		34.1		36.0		33.4		33.1		75	
80	33.9		33.7		33.4		35.3		32.9		32.6		80	
85	33.1		32.9		32.7		34.7		32.2		32.1		85	
90	32.5		32.3		32.1		34.1		31.8		31.5		90	
95	31.8		31.7		31.6		33.6		31.3		31.1		95	
100	31.0		31.1		31.1		33.0		30.8		30.6		100	
105	29.8	22.9	30.4		30.4		32.3		30.4		30.1		105	
110	28.1	22.2	29.0		29.6		31.8		29.8		29.6		110	
115	26.9	21.7	27.8	21.9	28.3	22.0	30.9	22.1	29.2	22.3	29.1	22.3	115	
120	25.8	21.2	26.5	21.3	27.0	21.4	29.7	21.6	28.4	21.8	28.6	21.8	120	
125	24.5	20.7	25.2	20.7	26.0	20.9	28.3	21.2	27.2	21.4	27.8	21.4	125	
130	23.4	20.0	24.1	20.2	24.8	20.4	27.1	20.6	26.1	20.8	26.6	20.8	130	
135	22.4	19.5	23.1	19.7	23.8	19.9	26.0	20.1	25.1	20.4	25.6	20.5	135	
140	21.4	19.0	22.1	19.3	22.9	19.5	25.0	19.6	24.1	19.9	24.6	20.1	140	
145	20.6	18.6	21.2	18.9	22.1	19.1	24.1	19.2	23.0	19.4	23.5	19.6	145	
150	19.8	18.2	20.4	18.4	21.2	18.6	23.3	18.8	22.2	19.1	22.8	19.3	150	
155	19.1	17.8	19.6	18.1	20.4	18.3	22.4	18.5	21.4	18.7	22.0	18.8	155	
160	18.3	17.4	18.9	17.6	19.5	17.8	21.5	18.0	20.7	18.3	21.0	18.3	160	
165	17.6	16.9	18.3	17.1	18.7	17.3	20.6	17.5	20.2	17.8	20.1	18.0	165	
170	17.1	16.5	17.6	16.8	18.1	17.0	19.9	17.2	20.5	17.4	18.8	17.6	170	
175	16.5	16.2	17.0	16.5	17.6	16.7	19.3	16.9	19.6	17.1	17.7	17.3	175	
180	15.9	15.9	16.4	16.1	17.0	16.3	18.7	16.6	18.5	16.8	16.6	17.0	180	
185	15.3	15.6	15.9	15.9	16.4	16.1	17.9	16.3	17.3	16.5	15.4	16.7	185	
190	14.9	15.2	15.4	15.7	15.9	15.9	17.0	16.1	16.3	16.3	14.5	16.5	190	
195	14.3	15.1	14.8	15.2	15.4	15.5	16.0	15.8	15.3	16.0	13.5	16.2	195	
200	13.9	14.7	14.4	14.8	14.8	15.2	15.0	15.5	14.4	15.7	12.7	15.9	200	
205	13.5	14.2	14.0	14.5	14.1	14.9	14.0	15.2	13.5	15.3	11.8	15.6	205	
210	13.1	13.9	13.6	14.1	13.2	14.6	13.2	15.0	12.5	15.0	10.9	15.2	210	
215	12.6	13.7	12.9	13.9	12.4	14.2	12.3	14.7	11.7	14.7	10.1	15.0	215	
220	12.1	13.4	12.2	13.6	11.7	13.9	11.4	14.2	10.9	14.4	9.4	14.8	220	
225	11.7	13.1	11.4	13.3	10.9	13.6	10.7	13.8	10.1	14.2	8.6	14.5	225	
230	11.2	12.8	10.7	13.2	10.3	13.2	10.0	13.7	9.3	13.9	7.9	14.0	230	
235	10.5	12.6	10.0	12.9	9.5	13.0	9.2	13.3	8.6	13.7	7.2	13.0	235	
240	9.9	12.3	9.3	12.7	8.8	12.9	8.5	13.0	8.0	12.9	6.6	12.1	240	
245		12.0	8.6	12.4	8.1	12.6	7.8	12.4	7.3	11.9	6.0	11.0	245	
250		11.7		12.0	7.5	12.2	7.1	11.6	6.6	10.9	5.4	10.0	250	
255		11.7		11.6	7.0	11.2	6.6	10.6	5.9	10.1	4.7	9.2	255	
260				10.8		10.3	5.9	9.7	5.4	9.1	4.2	8.2	260	
265				10.0			9.5		8.9	4.8	8.2	3.7	7.3	265
270							8.6		8.0	4.3	7.3	3.2	6.4	270
275							7.8		7.2	3.8	6.5	2.7	5.6	275
280									6.4		5.8		4.9	280
285										5.0		4.1	285	

**(LJ) Luffing Jib Operating Conditions**

(LJ) Luffing Jib Operating Conditions					
Jib length ft(m)	Insert			Boom Length ft(m)	Boom Angle
	9.8ft (3m)	19.7ft (6m)	39.4ft (12m)		
68.9(21)	1	1	-	85.3ft(26m)~203.4ft(62m)	65° ~88°
78.7(24)	-	2	-	85.3ft(26m)~203.4ft(62m)	65° ~88°
88.6(27)	1	2	-	85.3ft(26m)~203.4ft(62m)	65° ~88°
98.4(30)	-	1	1	85.3ft(26m)~203.4ft(62m)	65° ~88°
108.2(33)	1	1	1	85.3ft(26m)~203.4ft(62m)	65° ~88°
118.1(36)	-	2	1	85.3ft(26m)~203.4ft(62m)	65° ~88°
127.9(39)	1	2	1	85.3ft(26m)~203.4ft(62m)	65° ~88°
137.8(42)	-	1	2	85.3ft(26m)~203.4ft(62m)	65° ~88°
147.6(45)	1	1	2	85.3ft(26m)~203.4ft(62m)	65° ~88°
157.4(48)	-	2	2	85.3ft(26m)~203.4ft(62m)	65° ~88°
167.3(51)	1	2	2	85.3ft(26m)~203.4ft(62m)	65° ~88°
177.1(54)	-	1	3	85.3ft(26m)~203.4ft(62m)	65° ~88°
187(57)	1	1	3	85.3ft(26m)~203.4ft(62m)	65° ~88°
196.8(60)	-	2	3	85.3ft(26m)~203.4ft(62m)	65° ~88°
206.6(63)	1	2	3	85.3ft(26m)~203.4ft(62m)	65° ~88°



**(LJ) Luffing Jib Range Diagram**





Unit: Klb

**(LJ) Luffing Jib Load Chart**

Rear counterweight 220,500 lbs, Carbody counterweight 88,200 lbs, 360° Capacity x (1000lbs)													
Boom length	85.3 ft												Boom length
Jib length (ft)	88.6						98.4						Jib length (ft)
Boom Angle (°)	88	85	80	75	70	65	88	85	80	75	70	65	Boom Angle (°)
Radius (ft)													Radius (ft)
33													33
35													35
40	182.7						172.9						40
45	165.2						163.6						45
50	149.5	164.8					148.4						50
55	135.3	149.2					134.4	147.5					55
60	123.0	135.4	133.8				123.0	135.0					60
65	113.4	123.5	123.3				112.6	123.1					65
70	104.9	113.7	114.5				104.9	113.2	111.8				70
75	96.8	105.3	106.7				97.7	104.9	104.2				75
80	88.2	97.9	99.4	94.9			90.9	97.8	97.4	93.3			80
85	77.2	90.4	92.3	88.2			84.8	91.1	91.1	87.5			85
90	65.5	78.9	86.1	82.3			74.7	85.2	85.1	81.7			90
95		66.7	80.5	76.9	74.4		64.8	77.4	79.5	76.4			95
100			75.4	72.0	69.7			67.8	74.5	71.6	68.7		100
105			70.7	67.7	65.5	63.8		57.0	70.0	67.2	64.6		105
110				63.9	61.7	60.3			66.1	63.4	60.9		110
115					58.4	57				60.0	57.6	56.1	115
120						53.9				56.8	54.6	53.1	120
125											51.8	50.4	125
130											49.2	47.9	130
135												45.6	135





Unit: Klb

**(LJ) Luffing Jib Load Chart**

Rear counterweight 220,500 lbs, Carbody counterweight 88,200 lbs, 360° Capacity x (1000lbs)													
Boom length	85.3 ft												Boom length
Jib length (ft)	128						137.8						Jib length (ft)
Boom Angle (°)	88	85	80	75	70	65	88	85	80	75	70	65	Boom Angle (°)
Radius (ft)													Radius (ft)
50	137.1												50
55	131.1						118.7						55
60	120.2	128.4					116.3						60
65	110.1	118.6					107.6						65
70	101.9	110.3					99.8	108.7					70
75	94.7	102.9					92.7	101.4					75
80	88.4	96.2	92.6				86.5	94.7	89.3				80
85	83.0	90.0	86.9				80.9	88.8	83.8				85
90	78.4	84.3	82.0				76.6	83.5	79.2				90
95	73.9	79.0	77.5	72.8			72.3	78.6	74.8				95
100	69.0	74.5	73.2	68.7			68.2	74.3	70.8	67.4			100
105	63.3	70.6	68.8	64.7			64.5	70.6	67.1	63.8			105
110	57.0	65.4	64.9	61.0			59.9	66.7	63.1	60.2			110
115	51.4	59.5	61.3	57.7	55.4		54.6	62.6	59.6	56.8			115
120	45.4	52.8	58.0	54.7	52.5		49.4	57.8	56.4	53.6	51.6		120
125	38.2	45.6	55.0	51.8	49.7	47.7	44.4	52.2	53.6	50.9	49.0		125
130	32.6	39.6	52.2	49.2	47.2	45.4	37.5	47.4	50.9	48.5	46.5		130
135			49.8	46.9	45.0	43.2	32.5	40.8	48.5	46.1	44.2	42.4	135
140			47.5	44.7	42.9	41.2		34.5	44.8	43.9	42.1	40.4	140
145				42.7	40.9	39.3			39.2	42.0	40.2	38.5	145
150				40.7	39.0	37.4			33.7	40.0	38.4	36.8	150
155					37.3	35.7				38.3	36.7	35.1	155
160						34.2					35.1	33.6	160
165												32.1	165
170												30.8	170
175												29.5	175



Unit: Klb

**(LJ) Luffing Jib Load Chart**

Rear counterweight 220,500 lbs, Carbody counterweight 88,200 lbs, 360° Capacity x (1000lbs)													
Boom length	85.3 ft												Boom length
Jib length (ft)	167.3						177.2						Jib length (ft)
Boom Angle (°)	88	85	80	75	70	65	88	85	80	75	70	65	Boom Angle (°)
Radius (ft)													Radius (ft)
55													55
60	84.5						70.1						60
65	83.6						69.5						65
70	82.7						68.8						70
75	81.8	81.4					68.1	67.7					75
80	80.8	80.6					67.3	66.9					80
85	79.5	79.7					66.5	66.3					85
90	75.0	77.6					65.9	65.6					90
95	70.8	74.2	71.2				65.2	64.9					95
100	66.9	70.3	67.4				64.2	64.4	62.7				100
105	63.3	66.7	63.9				62.5	63.9	62.1				105
110	60.2	63.3	60.7				59.1	62.1	59.6				110
115	57.3	60.3	57.8	55.4			55.0	59.5	57.0				115
120	54.6	57.4	55.1	52.8			50.8	56.5	54.4	52.1			120
125	52.0	54.4	52.2	50.0			47.0	53.3	51.8	49.7			125
130	48.9	51.7	49.6	47.4			43.4	49.0	49.2	47.2			130
135	45.1	49.2	47.2	45.1	43.2		40.1	45.3	46.9	44.9			135
140	41.4	46.5	44.9	43.0	41.2		37.0	41.8	44.7	42.8	40.8		140
145	38.1	43.4	42.9	41.1	39.1		34.2	38.5	42.7	40.7	38.9		145
150	34.9	39.8	40.9	39.1	37.4		31.7	35.6	40.7	38.8	37.0		150
155	28.8	36.2	39.1	37.3	35.7	34.1	29.1	32.9	38.8	37.1	35.3		155
160	23.7	31.0	37.5	35.7	34.1	32.5	26.7	30.4	36.7	35.5	33.7	32.2	160
165		24.7	35.0	34.2	32.6	31.0	23.7	28.1	34.4	33.8	32.2	30.8	165
170		21.2	29.5	32.7	31.4	29.8	16.9	25.7	31.6	32.5	31.0	29.5	170
175			25.3	31.4	30.0	28.5	13.2	19.3	29.2	31.2	29.7	28.2	175
180				30.1	28.7	27.3		14.5	24.1	29.9	28.5	27.0	180
185				28.9	27.5	26.1			18.0	27.5	27.3	25.9	185
190				27.7	26.5	25.1			15.3	21.6	26.3	24.9	190
195					25.4	24.1				18.5	25.2	23.8	195
200						23.2					24.1	22.8	200
205												21.9	205
210												21.0	210

**(LJ) Luffing Jib Load Chart**

Rear counterweight 220,500 lbs, Carbody counterweight 88,200 lbs, 360° Capacity x (1000lbs)																				
Boom length	85.3 ft																Boom length			
Jib length (ft)	187					196.9					206.7						Jib length (ft)			
Boom Angle (°)	88	85	80	75	70	65	88	85	80	75	70	65	88	85	80	75	70	65	Boom Angle (°)	
Radius (ft)																			Radius (ft)	
70	67.6						61.4												70	
75	66.9						60.7						55.5						75	
80	66.1	65.7					59.9	59.7					54.8						80	
85	65.2	64.9					59.3	58.9					54.2						85	
90	64.4	64.2					58.7	58.5					53.5	53.3					90	
95	63.8	63.4					58.0	57.8					52.8	52.6					95	
100	63.2	62.8	61.6				57.3	57.1					52.2	52.0					100	
105	62.3	62.3	61.1				56.5	56.5	55.6				51.4	51.4					105	
110	59.4	60.9	58.6				56.0	55.8	54.8				50.8	50.8					110	
115	56.6	58.5	56.0				55.0	55.2	54.0				50.2	50.2	49.4				115	
120	54.0	55.8	53.4				53.2	54.2	52.5				49.6	49.6	48.8				120	
125	51.3	53.3	50.9	48.7			50.7	52.5	50.1	47.7			48.9	49.0	48.1				125	
130	48.8	51.0	48.7	46.4			48.5	50.2	47.8	45.5			47.9	48.3	46.6				130	
135	46.5	48.6	46.4	44.2			46.4	48.0	45.7	43.6			46.0	46.8	44.8	42.7			135	
140	44.4	46.2	44.1	42.2			44.4	45.8	43.7	41.6			44.0	45.0	42.9	40.9			140	
145	42.3	44.0	42.1	40.3	38.3		42.5	43.6	41.7	39.7			42.3	43.3	41.1	39.1			145	
150	39.1	42.0	40.2	38.3	36.4		40.6	41.6	39.7	37.8			40.3	41.3	39.2	37.4			150	
155	36.1	40.2	38.4	36.5	34.7		37.9	39.8	37.9	36.1	34.3		38.8	39.4	37.4	35.6			155	
160	33.4	37.8	36.7	34.9	33.2		35.0	38.1	36.3	34.5	32.7		36.6	37.7	35.7	33.9	32.2		160	
165	30.0	34.8	35.0	33.4	31.8	30.3	32.2	36.2	34.6	33.0	31.2		33.8	36.0	34.2	32.4	30.9		165	
170	23.2	32.2	33.5	31.9	30.6	29.0	29.9	33.8	33.1	31.5	30.0		31.5	34.3	32.7	31.2	29.6		170	
175	19.9	25.6	32.1	30.7	29.2	27.7	27.6	31.4	31.8	30.3	28.7	27.1	29.3	32.6	31.4	29.8	28.2		175	
180	17.1	20.8	30.9	29.5	27.9	26.5	22.5	26.2	30.5	29.1	27.5	26.0	27.1	30.6	30.1	28.5	27.0	25.5	180	
185		18.0	29.7	28.3	26.7	25.3	16.5	20.0	29.3	27.9	26.3	24.9	23.5	28.2	28.9	27.3	25.9	24.3	185	
190		15.1	28.5	27.1	25.7	24.3	14.0	17.6	28.1	26.7	25.3	23.9	16.3	26.1	27.7	26.3	24.7	23.3	190	
195			27.4	26.0	24.6	23.3	11.6	15.0	21.8	25.6	24.2	22.9	13.7	18.8	26.6	25.2	23.7	22.3	195	
200			26.3	24.9	23.6	22.4			18.0	24.6	23.2	22.0	11.4	14.6	21.7	24.1	22.7	21.4	200	
205				23.9	22.7	21.5			15.6	23.7	22.3	21.1		12.3	16.5	23.1	21.8	20.5	205	
210				23.0	21.8	20.6			12.7	22.6	21.4	20.2		9.9	15.3	22.2	21.0	19.6	210	
215					20.9	19.8				21.7	20.5	19.4			12.7	21.3	20.1	18.9	215	
220						19.0						19.7	18.7			20.5	19.3	18.2	220	
225													18.0			19.7	18.5	17.4	225	
230																	17.9	16.7	230	
235																		17.1	16.0	235
240																			15.3	240







**(LJ) Luffing Jib Load Chart**

Rear counterweight 220,500 lbs, Carbody counterweight 88,200 lbs, 360° Capacity x (1000lbs)													
Boom length	114.8 ft												Boom length
Jib length (ft)	128						137.8						Jib length (ft)
Boom Angle (°)	88	85	80	75	70	65	88	85	80	75	70	65	Boom Angle (°)
Radius (ft)													Radius (ft)
50													50
55	121.2						108.5						55
60	119.5	118.5					107.8						60
65	113.2	110.1					107						65
70	105.9	102.6					103.1	100.8					70
75	99	95.8					97.6	94.5					75
80	92.8	89.7					91.5	88.5					80
85	87.2	84.4					86	83.2					85
90	82.6	79.8	75.5				81.4	78.7	74.5				90
95	78.1	75.4	71.4				77	74.4	70.4				95
100	74	71.5	67.6				73	70.5	66.6				100
105	70.4	68.1	64.1	60.5			69.4	67.1	63.3	59.7			105
110	66.9	64.9	61	57.6			66.1	63.9	60.2	56.9			110
115	61.3	61.6	58.2	55			63	60.9	57.4	54.2			115
120	53.6	58.4	55.4	52.4			59.3	58	54.8	51.7			120
125	44.2	55.2	52.6	49.7	46.9		54.2	55.2	52.2	49.3	46.3		125
130	37.5	47.8	50	47.2	44.4		44.9	52.5	49.6	46.8	44.2		130
135		41	47.6	44.9	42.2		38.3	50	47.3	44.6	42.1		135
140			45.3	42.8	40.3	37.9		47.6	45.1	42.6	40		140
145			43.3	40.9	38.5	36.1		45.3	43.1	40.7	38.1	35.7	145
150			41.3	39	36.6	34.4		43.1	41.1	38.8	36.4	34.2	150
155				37.3	35.1	32.9			39.3	37.1	34.9	32.7	155
160					33.5	31.4				35.5	33.3	31.2	160
165					32	30.2				33.8	31.8	29.9	165
170					30.8	28.9				32.5	30.6	28.6	170
175						27.7					29.3	27.5	175
180												26.3	180





**(LJ) Luffing Jib Load Chart**

Rear counterweight 220,500 lbs, Carbody counterweight 88,200 lbs, 360° Capacity x (1000lbs)													
Boom length	114.8 ft												Boom length
Jib length (ft)	167.3						177.2						Jib length (ft)
Boom Angle (°)	88	85	80	75	70	65	88	85	80	75	70	65	Boom Angle (°)
Radius (ft)													Radius (ft)
55													55
60	78.9												60
65	78.3												65
70	77.5						64.6						70
75	76.8	76.4					64						75
80	76	75.6					63.3	63.1					80
85	75.2	74.8					62.7	62.5					85
90	74.5	73.7					62.1	61.9					90
95	72.5	70.9					61.7	61.5					95
100	69.5	67.2	63.2				61.4	61.1					100
105	66.1	63.7	59.9				60.9	60.5	58.3				105
110	62.9	60.6	57.1				60.3	59.3	56.1				110
115	60	57.8	54.4				58.6	57	53.6				115
120	57.4	55.3	51.9	48.5			56.4	54.5	51.1				120
125	54.9	52.9	49.5	46.3			54.1	52.1	48.7	45.5			125
130	52.6	50.6	47.3	44.3			51.8	49.8	46.5	43.6			130
135	50.3	48.4	45.3	42.5			48.7	47.7	44.7	41.7			135
140	48	46.3	43.4	40.7			45.2	45.8	42.9	40			140
145	45.6	44.4	41.7	38.9	36.3		41.5	44	41.1	38.3			145
150	42.5	42.3	39.8	37.2	34.8		38.1	42	39.4	36.8			150
155	34.3	40.4	38	35.5	33.3		35.1	40.2	37.7	35.3	32.8		155
160	28.1	38.7	36.3	33.9	31.8		32.4	37.8	36.1	33.7	31.4		160
165	25	37	34.8	32.4	30.4	28.2	29.7	34.8	34.4	32.2	30.1		165
170	20.9	35.5	33.3	31.2	29.1	26.9	27.3	32	33.1	31	28.8		170
175		34.1	31.9	29.9	27.9	25.9	22.3	29.4	31.8	29.6	27.5	25.5	175
180			30.7	28.7	26.7	24.8		25.1	30.5	28.4	26.4	24.4	180
185				27.5	25.5	23.7			29.3	27.3	25.3	23.3	185
190				26.5	24.5	22.7			28.1	26.1	24.3	22.3	190
195				25.4	23.5	21.7			27	25.1	23.2	21.3	195
200					22.6	20.8				24.1	22.2	20.5	200
205						20					21.4	19.7	205
210						19.2					20.6	18.8	210
215						18.5					19.7	18.1	215
220												17.5	220

Unit: Klb

**(LJ) Luffing Jib Load Chart**

Rear counterweight 220,500 lbs, Carbody counterweight 88,200 lbs, 360° Capacity x (1000lbs)																			
Boom length	114.8 ft																		Boom length
Jib length (ft)	187						196.9						206.7						Jib length (ft)
Boom Angle (°)	88	85	80	75	70	65	88	85	80	75	70	65	88	85	80	75	70	65	Boom Angle (°)
Radius (ft)																			Radius (ft)
70	63.8						58.2												70
75	63.2						57.5						52.9						75
80	62.5	62.1					56.8						52.2						80
85	61.7	61.5					56.5						51.6						85
90	61.3	60.8					56	55.8					51	50.8					90
95	60.7	60.3					55.4	55.2					50.4	50.2					95
100	60.1	59.9					54.8	54.6					49.8	49.7					100
105	59.5	59.3	57.7				54.2	54					49.2	49.2					105
110	58.9	58.2	55				53.6	53.4					48.7	48.6					110
115	57.5	56	52.5				53	52.8	50.8				48.2	48	46.9				115
120	55.5	53.5	50.1				52.4	51.8	49.1				47.6	47.4	46.4				120
125	53.1	51.1	47.7				51.9	50.1	46.9				47.2	47	45.9				125
130	50.8	48.8	45.7				49.9	47.9	44.7				46.7	46.5	43.8				130
135	48.6	46.7	43.8	40.7			47.8	45.9	42.9				46.1	44.9	41.9				135
140	46.6	44.8	41.9	39			45.8	44	41.1	38.2			45	43	40.2	37.2			140
145	44.8	43.1	40.1	37.3			44	42.3	39.3	36.5			43.3	41.3	38.5	35.7			145
150	43	41.4	38.6	35.8			42.4	40.6	37.8	35			41.4	39.8	36.8	34.2			150
155	41.2	39.7	37.1	34.4	31.9		40.7	39.1	36.3	33.6			39.9	38.3	35.4	32.8			155
160	39.5	38.1	35.5	33	30.6		39.1	37.5	34.8	32.3	30		38.3	36.7	34	31.4			160
165	37.5	36.4	34	31.6	29.4		37.4	36	33.4	31.1	28.8		36.8	35.3	32.7	30.2	27.8		165
170	34.5	34.9	32.5	30.4	28.1		35.7	34.5	32.1	29.9	27.5		35.3	34	31.4	28.9	26.7		170
175	25.4	33.4	31.3	29.1	26.9		33.9	33.1	30.9	28.7	26.5		33.9	32.6	30.3	27.9	25.7		175
180	20.1	27.7	30	27.9	25.8	23.8	26.7	31.8	29.6	27.5	25.4		32.5	31.3	29.1	26.8	24.6		180
185	18.2	20.9	28.7	26.7	24.7	22.7	18	30.5	28.3	26.3	24.3	22.2	28.4	30.1	27.9	25.7	23.6		185
190	15.1	19.7	27.7	25.7	23.7	21.7	17	29.3	27.3	25.3	23.3	21.3	16.6	28.9	26.7	24.7	22.7		190
195			26.6	24.6	22.7	20.9	15	28	26.2	24.2	22.2	20.3	14.9	27.6	25.6	23.6	21.7	19.7	195
200			25.5	23.6	21.8	20		26.9	25.1	23.2	21.3	19.5	13.8	26.5	24.6	22.6	20.8	19	200
205				22.7	20.9	19.2			24.1	22.3	20.5	18.7		25.5	23.7	21.7	19.9	18.2	205
210				21.8	20	18.5			23.2	21.4	19.6	17.9		24.6	22.8	20.8	19	17.3	210
215				20.9	19.2	17.7			22.3	20.5	18.9	17.1		23.1	21.9	20	18.3	16.7	215
220					18.5	17				19.7	18.2	16.5			21	19.3	17.6	16	220
225						16.3						17.4	15.8			18.5	16.9	15.3	225
230												16.7	15.1			17.9	16.3	14.7	230
235												16	14.4			17.1	15.5	13.9	235
240													13.8				14.8	13.4	240
245																		12.8	245
250																		12.2	250
255																		11.6	255



Unit: Klb

**(LJ) Luffing Jib Load Chart**

Rear counterweight 220,500 lbs, Carbody counterweight 88,200 lbs, 360° Capacity x (1000lbs)													
Boom length	144.4 ft												Boom length
Jib length (ft)	88.6						98.4						Jib length (ft)
Boom Angle (°)	88	85	80	75	70	65	88	85	80	75	70	65	Boom Angle (°)
Radius (ft)													Radius (ft)
33													33
35													35
40	158.7												40
45	158.7												45
50	148.1						142.1						50
55	136.1	133.6					134	128.6					55
60	125.3	122.9					123.4	118.4					60
65	116	113.7					114.4	109.7					65
70	108.3	106.1					106.7	102.4					70
75	101.3	99.2	92.3				99.8	95.7					75
80	95	93.1	86.5				93.6	89.8	83.5				80
85	89.6	87.7	81.4				88.4	84.6	78.7				85
90	84.9	82.9	76.9				83.7	80.1	74.3				90
95	77.4	78.6	72.8	67.7			79.4	75.9	70.4				95
100		74.8	69.1	64.1			74.8	72.1	66.8	61.7			100
105		71.4	65.7	60.8			69	68.7	63.5	58.7			105
110			62.8	58				65.6	60.6	56			110
115			59.6	55.3	51.1				57.8	53.4			115
120				52.7	48.8				55.1	50.9	48.6		120
125					46.3					48.7	46.4		125
130					44					46.2	44.2		130
135					41.9	42				44	42.1	41.7	135
140						40					40.2	39.8	140
145						38.2					38.3	37.9	145
150						36.5					36.6	36.2	150
155												34.5	155
160												32.9	160



Unit: Klb

**(LJ) Luffing Jib Load Chart**

Rear counterweight 220,500 lbs, Carbody counterweight 88,200 lbs, 360° Capacity x (1000lbs)													
Boom length	144.4 ft												Boom length
Jib length (ft)	128						137.8						Jib length (ft)
Boom Angle (°)	88	85	80	75	70	65	88	85	80	75	70	65	Boom Angle (°)
Radius (ft)													Radius (ft)
50													50
55	106.5						96.5						55
60	105.7						95.9						60
65	104.9						95.1						65
70	100.5	97.2					94.3	93.6					70
75	95	90.9					92	89.7					75
80	89.2	85.2					88	84.2					80
85	84	80.3					82.8	79.3					85
90	79.5	75.9	70.4				78.4	74.9					90
95	75.3	71.8	66.6				74.3	70.9	65.6				95
100	71.5	68.2	63.1				70.5	67.2	62.1				100
105	68.1	64.9	59.9				67.1	63.9	59.1				105
110	64.9	61.8	57.1				63.9	61	56.3				110
115	62	59	54.4	51.2			61	58.2	53.6	49.3			115
120	59.2	56.4	51.9	48.9			58.4	55.6	51.2	47			120
125	56.2	54.1	49.7	46.8			56.1	53.3	49.1	44.9			125
130	51.4	51.9	47.7	44.7			53.8	51.1	46.9	43			130
135		49.7	45.7	42.8	38.2		50.1	49.1	45	41.2			135
140			43.8	41.1	36.6		45.9	47.1	43.3	39.6	36.8		140
145			42.1	39.6	35.1			45	41.7	37.9	35.3		145
150			40.1	37.8	33.7			43	39.8	36.5	33.9		150
155				36.1	32.3	32.6			38.1	35.1	32.6		155
160				34.5	30.8	31.2			36.5	33.5	31.3	30.7	160
165					29.6	29.8				32	30	29.5	165
170					28.3	28.5				30.8	28.7	28.2	170
175					27.1	27.4				29.5	27.5	27	175
180						26.3					26.4	25.9	180
185						25.1					25.3	24.8	185
190						24.1					24.2	23.9	190
195												22.9	195





Unit: Klb

**(LJ) Luffing Jib Load Chart**

Rear counterweight 220,500 lbs, Carbody counterweight 88,200 lbs, 360° Capacity x (1000lbs)													
Boom length	144.4 ft												Boom length
Jib length (ft)	167.3						177.2						Jib length (ft)
Boom Angle (°)	88	85	80	75	70	65	88	85	80	75	70	65	Boom Angle (°)
Radius (ft)													Radius (ft)
60	71.9												60
65	71.3												65
70	70.8						59.5						70
75	70.3						59						75
80	69.6	69.3					58.6	58.4					80
85	69	68.9					58.3	57.9					85
90	68.5	68.3					57.9	57.5					90
95	67.9	66.6					57.4	57					95
100	66.6	63.9					57	56.6					100
105	63.7	60.7	55.8				56.5	56.4	54				105
110	60.6	57.8	53				56.1	55.9	52				110
115	58	55.2	50.5				55.7	54.2	49.7				115
120	55.5	52.7	48.2				54.5	51.9	47.4				120
125	53.1	50.3	46.1				52.3	49.5	45.3				125
130	50.8	48.1	44				50	47.3	43.4				130
135	48.7	46.1	42.2	40.5			47.9	45.4	41.5	38.9			135
140	46.8	44.3	40.6	38.7			46	43.6	39.8	37.2			140
145	45	42.7	38.9	37.1			44.2	41.9	38.1	35.7			145
150	43.4	41	37.4	35.7			42.6	40.4	36.6	34.3			150
155	41.5	39.5	35.9	34.2	29.2		40.6	38.9	35.2	32.9			155
160	39.1	38	34.5	32.8	28		37.8	37.4	33.9	31.5	28.9		160
165	36.3	36.6	33.3	31.6	26.8		34.5	36	32.7	30.3	27.7		165
170	33.3	35.1	32	30.5	25.9		31.6	34.7	31.4	29.2	26.7		170
175		33.7	30.9	29.4	24.9			33.4	30.3	28.2	25.6		175
180			29.7	28.3	23.9	23.4		32.2	29.2	27.1	24.6		180
185			28.5	27.1	23	22.5		30.9	28.1	26.2	23.7	22	185
190			27.3	26.1	22.1	21.7		29.7	27.1	25.3	22.9	21	190
195				25.1	21.3	20.8			26	24.2	21.9	20.3	195
200				24.1	20.4	20			24.9	23.2	21.1	19.6	200
205					19.6	19.2				22.3	20.3	18.8	205
210					18.8	18.5				21.5	19.5	18.1	210
215					18.1	17.7				20.6	18.7	17.3	215
220						16.9					17.9	16.5	220
225						16.2						15.8	225
230												15.2	230
235												14.5	235





**(LJ) Luffing Jib Load Chart**

Rear counterweight 220,500 lbs, Carbody counterweight 88,200 lbs, 360° Capacity x (1000lbs)													
Boom length	173.9 ft												Boom length
Jib length (ft)	88.6						98.4						Jib length (ft)
Boom Angle (°)	88	85	80	75	70	65	88	85	80	75	70	65	Boom Angle (°)
Radius (ft)													Radius (ft)
40	134.4												40
45	131.9												45
50	129						119.5						50
55	125.1	122.8					117.4						55
60	119.5	113.2					114.5	111.6					60
65	110.9	105					109	103.6					65
70	103.7	98					102.2	96.8					70
75	97.2	91.8					95.8	90.6					75
80	91.4	86.3	78.6				90	85.1	77.4				80
85	86.2	81.5	73.9				84.8	80.3	72.9				85
90	81.7	77.1	70				80.4	76	69				90
95	77.3	73.1	66.3				76.4	72	65.3				95
100		69.6	62.9	61.2			72.7	68.4	61.9				100
105		66.3	59.9	58.2			69.4	65.3	58.9	56.1			105
110			57.2	55.4				62.4	56.2	53.4			110
115			54.7	52.8				59.8	53.7	51			115
120				50.5	42.9				51.4	48.8			120
125				48.4	41.1				49.3	46.6	39.4		125
130				46.5	39.2				47.3	44.7	37.7		130
135				44.6	37.5					42.9	36.1		135
140					36.1	34.7				41.2	34.7		140
145					34.7	33.3					33.3	32.6	145
150					33.3	31.9					31.9	31.3	150
155						30.8					30.9	30.1	155
160						29.5						28.9	160
165												27.8	165
170												26.6	170















Unit: Klb

**(LJ) Luffing Jib Load Chart**

Rear counterweight 220,500 lbs, Carbody counterweight 88,200 lbs, 360° Capacity x (1000lbs)													
Boom length	203.4 ft												Boom length
Jib length (ft)	88.6						98.4						Jib length (ft)
Boom Angle (°)	88	85	80	75	70	65	88	85	80	75	70	65	Boom Angle (°)
Radius (ft)													Radius (ft)
40													40
45													45
50	104.8						98.3						50
55	102						96						55
60	99.1	105.8					93.6	99.5					60
65	96.2	98.7					91.4	96.7					65
70	93.3	92.4					89	91.1					70
75	90.6	86.6					86.5	85.5					75
80	87.4	81.3					84	80.3					80
85	82.6	76.9					81.4	75.9					85
90	78.4	72.8	64.3				77.2	71.8	63.4				90
95	74.5	69.1	60.9				73.3	68.1	60.1				95
100		65.7	57.8				69.8	64.9	57				100
105		62.7	55	53.4			66.7	61.7	54.2				105
110			52.5	50.8				58.9	51.7				110
115			50.2	48.4				56.6	49.4	47.7			115
120			34.8	46.2					47.3	45.6			120
125				44.2					45.3	43.6			125
130				42.3					43.5	41.7			130
135				40.6	31.3				41.8	39.9			135
140				39	30					38.3	29.5		140
145					28.7					36.8	28.3		145
150					27.6					35.5	27		150
155					26.5	24.5					25.9		155
160						23.5					24.9	22.9	160
165						22.5					24	21.8	165
170						21.7					23.1	21	170
175						20.9						20.2	175
180												19.5	180



Unit: Klb

**(LJ) Luffing Jib Load Chart**

Rear counterweight 220,500 lbs, Carbody counterweight 88,200 lbs, 360° Capacity x (1000lbs)													
Boom length	203.4 ft												Boom length
Jib length (ft)	128						137.8						Jib length (ft)
Boom Angle (°)	88	85	80	75	70	65	88	85	80	75	70	65	Boom Angle (°)
Radius (ft)													Radius (ft)
50													50
55		78.8					73.1						55
60		77.6					72.2						60
65		76.3					71.3						65
70		75.1					70.4						70
75		73.9	77.1				69.4	71.6					75
80		72.6	75.4				68.4	70.8					80
85		71.3	71.6				67.4	70					85
90		69.9	67.9				66.3	66.9					90
95		68.3	64.4				65.2	63.6					95
100		66.1	61.2	53.5			63.9	60.3					100
105		62.9	58.3	50.8			62.1	57.3	50				105
110		60.1	55.6	48.3			59.2	54.8	47.7				110
115		57.6	53.1	46.1			56.7	52.3	45.5				115
120		55.1	50.8	44.1			54.3	50	43.5				120
125		52.9	48.7	42.2	40		52.1	47.9	41.6				125
130		50.7	46.7	40.5	38.3		49.9	45.9	39.7				130
135		47.8	44.8	38.8	36.6		44.3	44.2	38.1	36			135
140			43.2	37.2	35.1		39.2	42.6	36.6	34.5			140
145				35.7	33.8			40.9	35.1	33.1			145
150				34.3	32.4			39.4	33.7	31.7			150
155				33.1	31.1	23.1		38.1	32.5	30.4			155
160				32	29.9	22.1			31.3	29.3	21.5		160
165					28.9	21.2			30.2	28.2	20.6		165
170					27.7	20.5			29.3	27	19.9		170
175	18.4				26.7	19.6				26.2	19.1		175
180	17.6				25.7	18.8				25.2	18.4		180
185	16.8					18.1				24.3	17.7	15.2	185
190	16.1					17.5				23.5	16.9	14.6	190
195	15.4					16.9					16.3	13.9	195
200	14.9										15.7	13.4	200
205											15.1	12.8	205
210											14.5	12.1	210
215												11.6	215
220												11.1	220





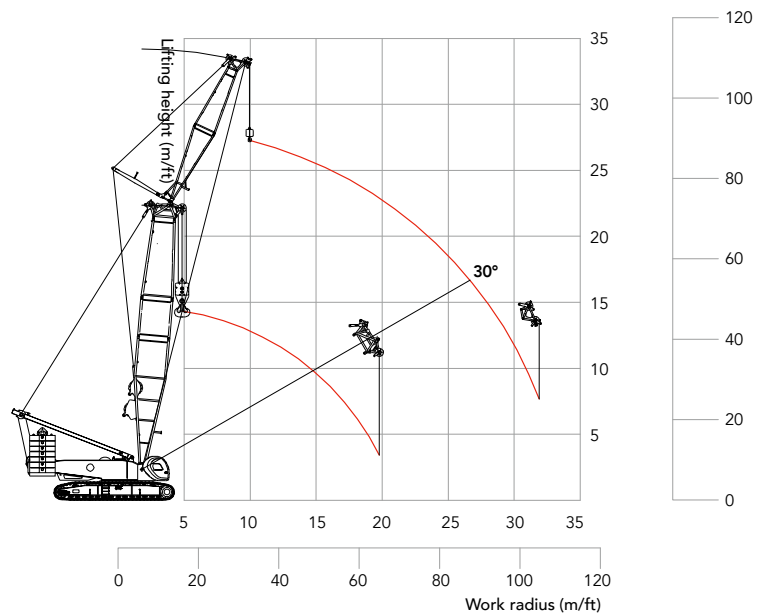
**(LJ) Luffing Jib Load Chart**

Rear counterweight 220,500 lbs, Carbody counterweight 88,200 lbs, 360° Capacity x (1000lbs)																			
Boom length	203.4 ft																		Boom length
Jib length (ft)	187						196.9						206.7						Jib length (ft)
Boom Angle (°)	88	85	80	75	70	65	88	85	80	75	70	65	88	85	80	75	70	65	Boom Angle (°)
Radius (ft)																			Radius (ft)
60	49.3																		60
65	48.9																		65
70	48.4																		70
75	47.9						44.9						41.8						75
80	47.5						44.5						41.4						80
85	47						44.2						41.1						85
90	46.6	47.5					43.8						40.7						90
95	46.2	47.1					43.5	43.7					40.3	40.3					95
100	45.9	46.7					43.2	43.4					40	40					100
105	45.4	46.4					42.7	42.9					39.7	39.7					105
110	44.9	46.1					42.4	42.6					39.2	39.4					110
115	44.6	45.7					42	42.3					38.9	39.1					115
120	44.2	44.9	38.6				41.6	42					38.6	38.8					120
125	43.7	43.4	36.8				41.3	41.6	36				38.3	38.5					125
130	42.7	41.5	35.3				41	40.6	34.3				38	38.2					130
135	41.2	39.8	33.7				40.7	39	32.7				37.7	37.5	31.9				135
140	39.6	38.2	32.3				40.2	37.4	31.3				37.4	36.4	30.6				140
145	38.1	36.5	30.9				39.3	35.7	30.1				37.1	34.9	29.2				145
150	36.7	35.1	29.6				37.8	34.3	28.8				36.8	33.5	27.8				150
155	35.3	33.8	28.4	25.7			36.4	33	27.6				35.6	32.2	26.7				155
160	33.6	32.5	27.3	24.6			35	31.7	26.5	23.8			34.2	30.9	25.7				160
165	30.4	31.3	26.2	23.6			33.6	30.6	25.4	22.7			32.9	29.8	24.6	21.6			165
170	21.6	30.1	25.1	22.6			32.1	29.5	24.3	21.7			31.6	28.5	23.5	20.8			170
175	19.5	29.1	24.2	21.8			30.5	28.5	23.4	20.9			30.2	27.6	22.6	19.8			175
180	18.4	28.1	23.3	20.8			24.8	27.4	22.5	20			28.9	26.6	21.7	18.9			180
185		27.2	22.4	19.9	13.7		17.8	26.4	21.6	19.2			27.6	25.6	20.8	18.1			185
190		26.3	21.6	19.2	12.9		16.6	25.5	20.8	18.4			26.1	24.7	20	17.4			190
195		25.3	20.7	18.4	12.3		15.5	24.5	20.1	17.5	11.7		17.3	23.7	19.3	16.6			195
200		24.5	20	17.7	11.8			23.7	19.3	16.8	11.1		13.4	22.9	18.6	15.9	10.2		200
205			19.4	17	11.3			23	18.6	16.1	10.6		12.6	22.2	17.9	15.2	9.7		205
210			18.7	16.3	10.7			22.2	18.1	15.4	10.1		11.7	21.4	17.3	14.6	9.1		210
215			18.1	15.6	10.2				17.3	14.8	9.5			20.6	16.5	13.9	8.6		215
220			17.5	15	9.8	6.9			16.7	14.2	9			20	15.9	13.3	8.2		220
225				14.4	9.3	6.5			16.1	13.6	8.5	5.8			15.3	12.7	7.7	4.8	225
230				13.9	8.9	6.2				13	8.1	5.3				12.1	7.3	4.4	230
235				13.3	8.4	5.6				12.4	7.8	5				11.6	6.8	4.1	235
240					8	5.3				12	7.4	4.6				11.1	6.5	3.6	240
245					7.6	4.9				11.5	6.9	4.2				10.6	6.1	3.2	245
250					7.2	4.6					6.5	3.7				10.1	5.8	2.8	250
255					6.8	4.3					6.2	3.4				9.8	5.5	2.5	255
260						3.9					6	3.1					5.2	0.9	260
265						3.5						2.7							265



## Shield Operating Conditions

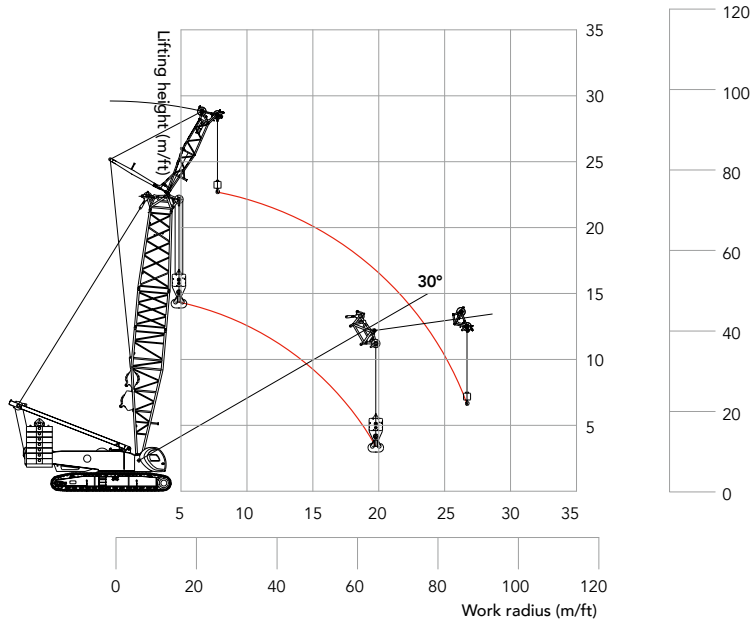
Shield configuration(boom to jib angle 20°)



Shield Configuration (I)			
1) Boom to jib angle 20°; 2) Rear counterweight 220.5 Klb, Carbody counterweight 88.2 Klb Boom length 65.6 ft Jib length 39.4 ft			
Radius ft	Boom hook capacity (empty jib hook) Klb	Jib hook (empty boom hook) Klb	Radius ft
16.4	549		16.4
17	540.2		17
20	493.0		20
25	396.8		25
30	327.4		30
35	283.6	205.7	35
40	228.8	191.1	40
45	188.1	167.4	45
50	158.9	147.8	50
55	134.2	130.6	55
60	113.5	115.5	60
65		103.4	65
70		93.4	70
75		84.7	75
80		77.2	80
85		70.7	85
90		65.2	90
95		60.1	95

## Shield Operating Conditions

Shield configuration(boom to jib angle 22°)



### Shield Configuration (II)

1) Boom to jib angle 22°; 2) Rear counterweight 246.9 Klb, Carbody counterweight 88.2 Klb  
 Boom length 65.6 ft Jib length 23.0 ft

Radius ft	Boom hook capacity (empty jib hook) Klb	Jib hook (empty boom hook) Klb	Radius ft
16.4	551.2		16.4
17	549.2		17
20	534.1		20
25	439.6		25
30	373.3	215.4	30
35	330.7	205.7	35
40	280.9	191.1	40
45	233.4	167.4	45
50	197.5	153.5	50
55	169.1	143.5	55
60	138.7	135.2	60
65		126.7	65
70		115.4	70
75		104.5	75
80		94.8	80
85		86.5	85





**SANY**  
**AMERICA**

318 Cooper Circle  
Peachtree City, GA 30269  
Tel: 678-251-2810  
Fax: 770-632-7820

We are constantly improving our products and therefore reserve the right to change designs and specifications without notice. This product brochure may contain illustration and specification of optional equipment and attachment that are not included in the standard scope of supply.