

SANY[®]

SPECIFICATION



 250t

 88m

 118m

SAC2500C8-8

SANY ALL TERRAIN CRANE

QUALITY CHANGES THE WORLD

www.sanyglobal.com

V1.0

It is one of the core business units in SANY Group, specializing in the development and manufacturing of high-end wheel cranes, crawler cranes and tower cranes, including the complete range of wheel cranes from 8 to 2400t, crawler cranes from 25 to 4500t and tower cranes from 6 to 185t.

三一集团旗下核心事业部，从事高端轮式起重机、履带起重机、塔式起重机系列产品的研发制造。覆盖8-2400吨全吨位轮式起重机，25-4500吨全吨位履带起重机，6-185吨塔式起重机。



SANY CRANE



Superior Performance

8-section 88m oval shaped boom and fixed jib 20m are standard, and optional two 8m jib inserts. Max. lifting height 118m, easily complete the installation of a hundred-meter towers.

Max. lifting moment of basic boom 730t.m, max. lifting capacity of full-extension boom 8.2t.

This crane matches the performance of a 300t model, and with 20t counterweight carried by itself, it seamlessly handles 90% working conditions of a 130t crane.

Heavy-duty Transfer Upgrade

Standard equipped with 445/95R25 tires, resistant to mud and bumps, capable of carrying 20t counterweights + four outriggers pad boxes for easy transfer.

Dual-engine upgrade, using DF Cummins stage IV engine, reduces fuel consumption by 30% during operation, no need to add urea, saving 100,000 yuan per year.

Reserved Superlift Interface

Superlift can be installed, with the boom + jib reaching 82.1+43m, increasing the lifting performance of the long boom segment by 40%. Superlift devices of 260t and 300t models are universally, worry-free upgrade.

New Dual Cabs

Equipped with multi-function driver's seat with air suspension, and double passenger seats foldable to make a berth, providing a car-level driving experience.

Electric seats, linked with the armrest box.

Remote Control

Vehicle remote control system enables a series of operations including one-key extension / retraction of outriggers, chassis suspension adjustment, remote power-on from the superstructure, luffing, boom telescoping, slewing, counterweight loading and unloading, and extension of the sliding step of the operator's cab.



**SANY ALL TERRAIN CRANE
SAC2500C8-8 / 250T LIFTING CAPACITY**

超强性能

8节椭圆形主臂全伸88m,标配20m副臂,可选两节8m延伸臂,最大起升高度118m,轻松完成百米线塔吊装;

基本臂最大起重力矩730t.m,全伸主臂最大吊重8.2t;

性能比肩 300 吨,随车 20 吨配重覆盖 130 吨 90% 工况。

重载转场排放升级

标配445/95R25轮胎,泥泞坑洼不陷胎,可携带20吨配重+四块支腿垫箱轻松转场;

双发再升级,采用东康非四发动机,作业油耗下降 30%,无需添加尿素,年省 10 万。

预留超起接口

可加装超起,主臂+副臂超起82.1m+43m,长臂段起重性能提升40%;

超起与 260t、300t 型号通用,升级无忧。

全新两室

主驾气浮多功能座椅,副驾双座椅折叠卧铺式,轿车级驾乘体验;
电动座椅,扶手箱联动。

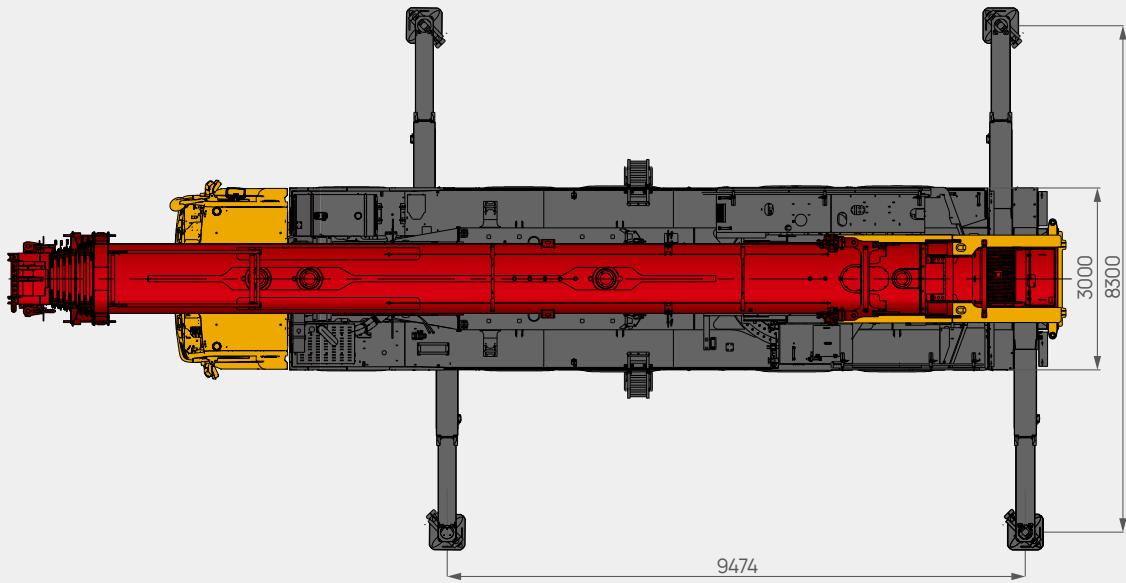
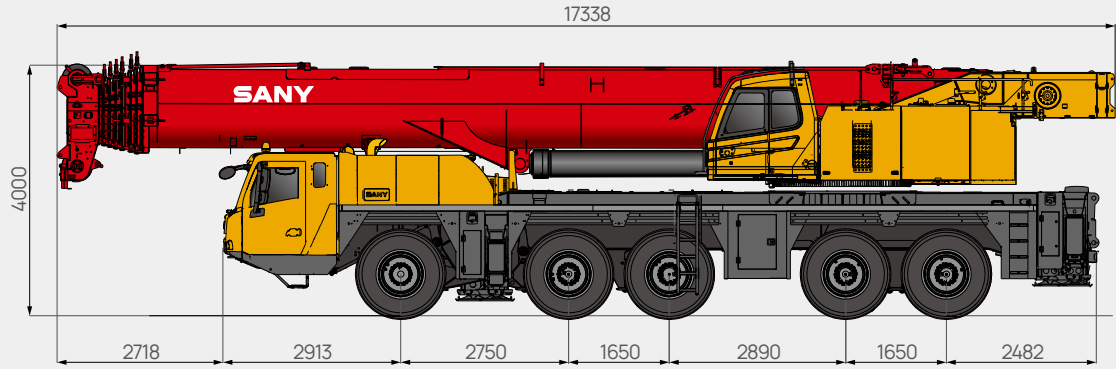
整车遥控

整车遥控系统,可实现支腿一键收缩、底盘悬挂调节、上车远程通电、变幅、回转、配重装卸、操作室踏板伸缩等一系列操作。



Overall Dimensions

整机尺寸



Technical Specification

整机参数

CATEGORY 类型	ITEM 项目	UNIT 单位	VALUE 参数	
CAPACITY 额定起重量	Max. lifting capacity 最大起重量	t	250	
WEIGHT 重量	Gross weight 整机总质量	kg	71000	
POWER CHASSIS 发动机参数	Engine model 发动机型号 (排放标准)	-	WEICHAI WP12.460E62 (China VI) 潍柴WP12.460E62(国VI)	
	Max. engine power 发动机最大功率	kW/rpm	338/1900	
	Max. engine torque 发动机最大输出扭矩	N·m/rpm	2200/1000-1400	
DIMENSIONS 尺寸参数	Overall length 整机全长	mm	17338	
	Overall width 整机全宽	mm	3000	
	Overall height 整机全高	mm	4000	
TRAVEL 行驶参数	Max. travel speed 最高行驶速度	km/h	80	
	Min. steering radius 最小转弯半径	m	10	
	Wheel formula 车轮模式	-	10 × 6	
	Min. rated lifting radius 最小额定幅度	m	3	
	Max. gradeability 最大爬坡度	-	45%	
	Fuel consumption per 100km 每 100 公里油耗	L	75	
	Tail slewing radius 转台尾部回转半径	mm	5365	
	Boom length 臂长	Basic boom 基本臂	m	14.9
		Full-extension boom 全伸主臂	m	88
		Full-extension boom + jib 全伸主臂 + 副臂	m	118
	Max. lifting height 最大起重高度	Basic boom 基本臂	m	15.2
		Full-extension boom 全伸主臂	m	88.2
		Full-extension boom + jib 全伸主臂 + 副臂	m	118
	Max. lifting moment 最大起重力矩	Basic boom 基本臂	kN·m	730
		Full-extension boom 全伸主臂	kN·m	278
		Full-extension boom + jib 全伸主臂 + 副臂	kN·m	105.4
Outrigger span (Longitudinal × Transverse) 支腿跨距 (纵 × 横)	m	8.3 × 9.47		
Jib offset 副臂安装角度	°	0, 15, 30		
AIRCONDITIONER 空调	In operator's cab 上车空调	-	Heating & Cooling 制冷、制热	
	In driver's cab 下车空调	-	Heating & Cooling 制冷、制热	

Technical Specification

整机参数



Axle Load 轴荷

Axle 轴	1	2	3	4	5	Gross weight 总重量
Axle load 轴荷 /kg	12000	12000	12000	12000	12000	60000
Remark 备注	Excluding jib, auxiliary winch, main & auxiliary hooks, spare tire, 5-8 sections of boom and rear outrigger. 不带副臂, 副卷扬, 主副钩, 备胎, 支腿盘, 5-8 节臂, 后支腿。					



Hook 吊钩

Rated load 额载 /t	Number of sheaves 滑轮数量	Rope rate 倍率	Hook weight/kg 吊钩重量
125 (double eye hook) ○	7	14	1443
80 (double eye hook) ●	3	7	695
32 ○	1	3	479
12.5 ●	-	1	270

● Standard 标配 ○ Optional 选配



Operations 主要动作参数

Item 项目	Max. single rope lifting speed (empty load) 单绳速度 (空载)	Rope diameter/length 钢丝绳直径 / 长度	Max. single line pull 最大单绳拉力
Main winch 主卷扬	120m/min	Φ22mm/410m	10.5t
Auxiliary winch 副卷扬	120m/min	Φ22mm/410m	10.5t
Slewing speed 回转速度	1.5r/min		
Full luffing up/down time of boom 主臂起落幅时间	60s/115s		
Full extension time of boom 主臂全伸时间	850s/850s		
Outrigger beam 水平支腿	Extension 伸	50s	
	Retraction 缩	50s	
Outrigger jack 垂直支腿	Extension 伸	50s	
	Retraction 缩	50s	

Crane Introduction

整机介绍

Carrier 下车

Driver's cab 驾驶室

- It is made of SANY independently developed new steel structure with excellent shock absorption and sealing, and designed with outward opening doors, comfortable driver's seat and co-driver's seat equipped with pneumatic suspension, adjustable steering wheel, wide-view rear-view mirror, demister, HVAC, stereo radio, and complete set of control instruments and meters, which is more comfortable, secure and user-friendly.
- 驾驶室为三一自主研发新款驾驶室，自主开发新型钢结构，减震性和封闭性优良，两侧外开式车门，配备气动悬置的驾驶室座与副驾驶座、可调整式的转向盘、大视野后视镜、配有头枕的舒适驾驶椅、防雾扇、冷暖空调，立体收音机等装配，控制仪器和仪表齐全，更加舒适、安全、人性化。

Carrier frame 车架

- Designed and manufactured by Sany, it is anti-torsion box structure welded by fine-grained high-strength steel plates with strong bearing capacity. The outriggers can retract into specially designed fixed boxes.
- 三一自主研发并专业化制造，结构优化，防扭转箱型结构，细晶粒高强度钢板焊接制作；支腿收缩在特制固定箱中。

Chassis engine 底盘发动机

- Model: WEICHAI WP12.460E62, supercharged, intercooled diesel engine.
- Max. torque: 2200N·m/(1000~1400)rpm.
- Fuel reservoir capacity: 560L.
- 型号：潍柴 WP12.460E62 增压中冷、柴油发动机。
- 最大扭矩：2200N·m/(1000~1400)rpm。
- 燃油箱：560L。

Transmission 变速箱

- FAST automatic transmission with hydraulic retarder, 12 speeds forward and 2 speeds reverse.
- 力士特自动变速箱（带液力缓速器，实现轻松下坡），12个前进档，2个倒档。

Axle 车桥

- HANDE axles, with all axles steered, and axles 2, 4, 5 driven. Axles 1 and 2 are equipped with linkage-feedback hydraulic power steering system, and axles 3, 4 and 5 are equipped with electro-hydraulic steering system, providing speed control assist and several special steering modes for option, and ensuring nimble steering and flexible control.
- 汉德车桥，全桥转向，2、4、5桥驱动。第1、2桥采用杆系反馈的液压助力转向系统，第3、4、5桥采用电控转向，可进行速度控制的辅助及可选择的特殊转向模式，转向轻便，操控灵活。

Suspension system 悬挂系统

- All axle suspension devices are height-adjustable oil and gas suspension devices with hydraulic locking. The suspension height can be adjusted up and down by 145mm, with suspension, rigid locking, automatic leveling, and vehicle lifting modes, suitable for various harsh working conditions and road surfaces, ensuring smooth driving and lateral stability for comfortable driving.
- 全部车桥悬架装置均为高度可调带液压闭锁的油气悬架装置。悬挂高度可上下145mm调节，具有悬挂、刚性锁定、自动调平、整车升降等模式，能适用各种恶劣工况和路面，保证车辆行驶的平顺性和侧稳定性，驾驶舒适。

Steering 转向系统

- Servo power steering, dual-circuit hydraulic steering system, with emergency steering pump.
- Six steering modes: 1) on-road driving (default); 2) all wheel steering; 3) crab steering; 4) reduced swing out steering; 5) independent rear axle steering; 6) independent front axle steering.
- 伺服动力转向器，双回路系统液压转向装置，带有应急转向泵；
- 转向模式共6种：1) 公路行驶模式（默认模式）；2) 全轮转向模式；3) 蟹形模式；4) 无偏摆转向模式；5) 独立后桥转向模式；6) 后桥锁定转向模式。

Tires 轮胎

- 445/95R25, radial tires.
- 445/95R25, 子午线真空胎。

Outrigger 支腿

- H-shape outrigger layout with a longitudinal and transverse span of 9.4m × 8.3m and automatic leveling function is equipped, and they are extended and retracted hydraulically at both directions.
- H形支腿，纵、横跨距9.4m × 8.3m，全液压水平垂直支腿油缸伸缩。具备自动水平调节功能。

Brake 制动系统

- Parking brake: Actuated by the accumulator, it applies to the axle 2 to axle 5.
- Service brake: All wheels are equipped with air servo brakes, dual-circuit braking system, with disc brakes installed on the axle 1 and axle 2.
- Assist brake: Transmission hydraulic retarder brake, which can reduce the wear of brake system and save the use costs.
- 驻车制动：由蓄压器驱动作用在第二至第五桥上；行车制动：所有轮子均用空气伺服制动器；双回路制动系统，一二桥车轮装有盘式制动器；辅助制动：变速箱液力缓速器制动，减少刹车部件的磨损，节约使用成本。

Electrical system 电气系统

- Modern data bus system, 24V DC power supply, and 2 battery packs with a capacity of 180Ah each, allowing for power cutoff of chassis.
- The chassis adopts CAN bus system, multi-functional centralized display system with low power consumption, and LCD screen with contrast adjustable.
- 现代数据总线系统，24V 直流电源，2组蓄电池组，每组180Ah，可实现下车电源切断；底盘采用CAN总线系统，多功能的集中显示系统，功率消耗小；采用LCD液晶显示，对比度可调整。

Crane Introduction

整机介绍

Superstructure 上车

Operator's cab 操纵室

- Sany new type operator's cab, which can be tilted upward by 20°. It adopts corrosion-resistant steel plate, it is provided with full coverage softened interior, panoramic sunroof, tilt positioning of operator seat back and other human centered design make the operation comfortable and easy. Configure main and auxiliary display screens to seamlessly integrate the main console with the operating display system, providing a clear and comprehensive view of all operating condition data during the lifting operation. Touch screen with adjustable viewing angle, multi-screen and multi-angle monitoring to ensure operation safety and realize one-touch operation, the main boom, luffing jib and superlift hoist are equipped with monitors for centralized monitoring in key areas. Perfect combination of main console and operation display system enables quick and easy human-computer interaction, heating and cooling A/C is provided.
- 三一新款操纵室, 0°~20°可变角度, 采用耐腐蚀钢板, 配置全覆盖软化内饰、全景式天窗、可调节座椅等人性化设计, 操作更舒适、轻松; 配置主、辅显示屏, 实现主控台与操作显示系统有机结合, 使吊装作业的全部工况数据一目了然; 触摸式显示屏, 视角可调节、多画面、多角度监控保证作业安全, 满足一键式操作; 主臂及超起卷扬配备监视器, 重点区域集中监视; 主控台与操作显示系统有机结合, 人机交互方便快捷; 配备冷暖空调。

Superstructure engine 上车发动机

- Model: DF Cummins QSB5.9CS4 220C.
- Rated power: 154kW/2200rpm.
- Max. torque: 820N.m/1600rpm.
- Emission: Non-road China IV.
- 型号: 东康QSB5.9CS4 220C.
- 额定功率: 154kW/2200 rpm.
- 最大扭矩: 820N.m/1600rpm.
- 环保性: 非道路国四。

Slewing 回转系统

- The slewing system adopts variable piston pump, and supports 360° rotation at a speed of 0~1.5r/min. The electro proportional closed type hydraulic circuit and electro proportional pedals are applied.
- 变量柱塞主油泵, 360°回转, 回转速度 0~1.5r/min; 采用电比例闭式液 压回路, 电比例踏板。

Slewing platform 转台结构

- Independently designed by Sany, it is made of fine grained high-strength steel plates, with optimized structure.
- 三一自主设计, 结构更优化, 由细晶粒高强度钢制成。

Boom system 吊臂系统

- Boom: 8-section boom of oval shaped profile made of fine-grained high strength steel plate, with a full- extension length of 88m.
- Jib: 20m fixed jib is offered as standard, offsetable at 0°/15°/30°. Optional jib is up to 36m in total.
- Telescopic mechanism: The inter-independent hydraulic telescopic mechanism, more efficient, safe and reliable.
- 主臂: 8节臂, 主臂全伸长 88m, 由细晶粒高强度钢制成, 卵圆形截面。
- 副臂: 标配 20m, 选配 36m, 0°/15°/30°机械变幅。
- 伸缩机构: 独立液压驱动伸缩, 高效安全可靠。

Hoist 起升机构

- The main winch adopts an electro proportional variable piston motor, providing good hoisting inching mobility and stability.
- 主卷扬采用电比例变量柱塞马达, 卷扬微动性、平稳性好。

Hydraulics 液压系统

- Key hydraulic components including main pump, slewing pump, main valve, winch motor and balance valve are of high quality, ensuring the stability and reliability of the hydraulic system; the accurate parameter matching further improves the operation performance.
- Electro proportional variable displacement piston pump is applied, and the pump displacement is adjusted in real-time by changing the opening of electric control joy, realizing high-precision flow control and reducing the energy consumption.
- Self-developed dual-pump shunt/confluence main valve enables higher speed in case of single motion and better maneuverability in case of combined motions.
- Passive compensated luffing down is adopted, ensuring better inching movement and stability.
- The slewing system is of closed type, and the flow rate and the flowing direction are changed by adjusting the variable pump swash plate, providing better inching mobility and stability. Single-cylinder pin telescoping system is applied for the boom.
- 采用高品质的主油泵、回转泵、主阀、卷扬马达、平衡等关键液压元件, 保证液压系统稳定、可靠; 通过精确的参数匹配, 使操作性能更加优越。
- 采用电比例变量柱塞泵, 通过电控手柄开度的变化, 实时调节油泵排量, 实现高精度流量控制, 作业时无能量损耗。
- 采用自主研发的双泵合 / 分流主阀, 单动作双泵合流效率更高, 组合动作双泵分流操控性更好。
- 采用自重落幅补偿液压系统, 落幅微动性、平稳性更优越。
- 回转为闭式系统, 通过调节变量泵斜盘的角度来改变流量及方向, 微动性优越、回转平稳。主臂伸缩采用单缸插销伸缩系统。

Control system 控制系统

- The crane is electronically controlled through the LMI system. Two multidirectional joysticks can return to the neutral position automatically. The movement of the crane is adjusted by regulating the hydraulic pump.
- 通过力矩限制器系统对起重机车进行电控, 两个多方向手柄, 可自动复位; 通过控制液压泵来控制上车的运动。

Counterweight 配重

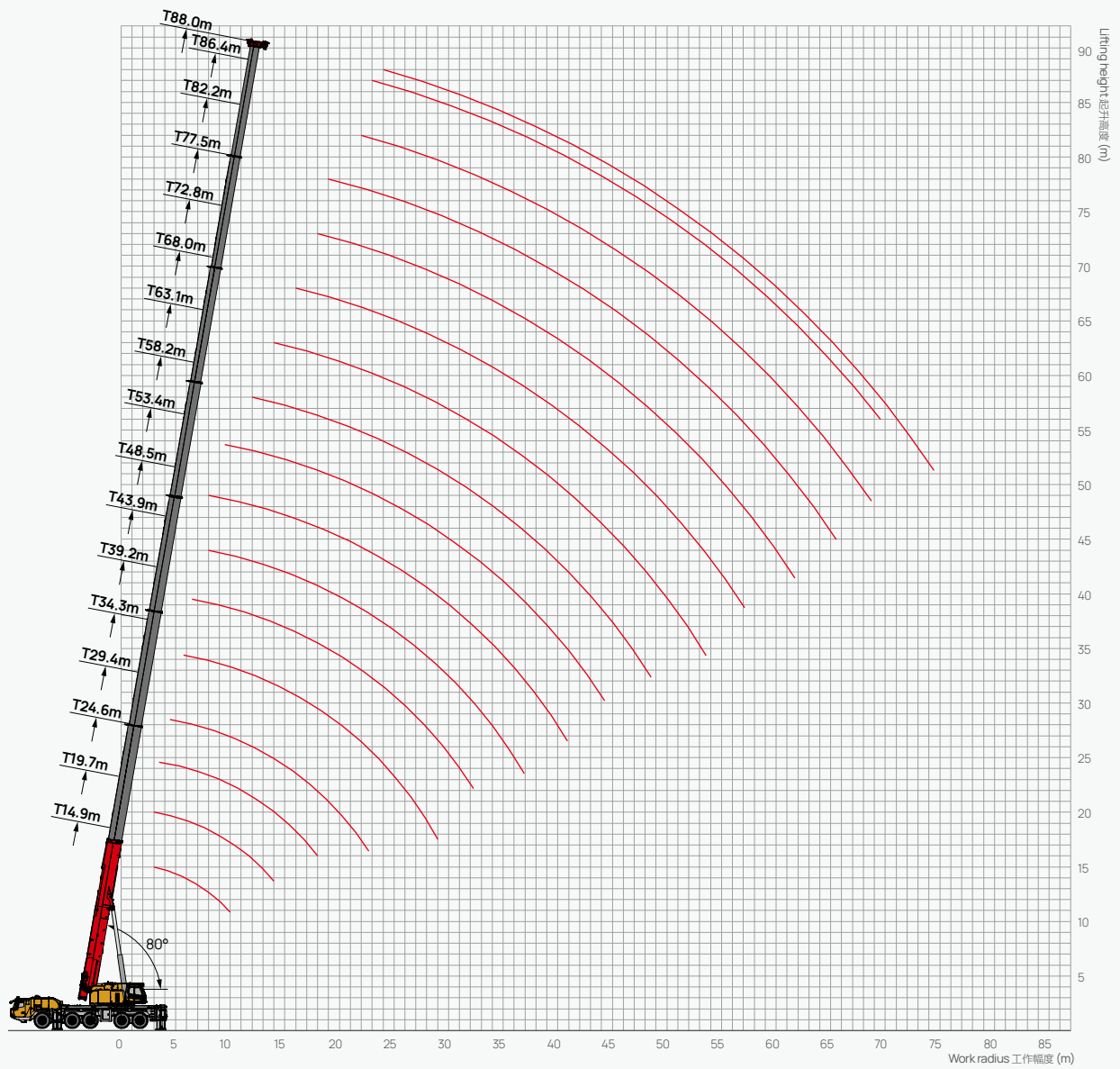
- Combined counterweights are applied, totaling 74t. 20t (13.5t front CW + 4.5t rear CW + 2t small CW) counterweight and 4 outrigger pads can be carried on board when traveling from jobsite to jobsite.
- 组合式活动平衡重74t, 可带20t (13.5t前置配重+4.5t后置配重+2t小配重) +4块支脚垫箱随车, 短距离转场。

Safety equipment 安全装置

- LMI: The load moment indicator is developed by using the mechanics analysis method based on the hoisting mechanical model, and the rated hoisting accuracy is controlled within $\pm 5\%$ through online empty-load calibration, enabling all-round protection for the hoisting operations; in case of overloading operations, the system will send an alarm automatically to guarantee safe operations.
- Hydraulic balance valve, overflow valve, two-way holding valve and other elements provided for the hydraulic system, ensuring stability and reliability of the hydraulic system.
- The 3rd wrap indicator of main winch to prevent over-releasing of wire rope.
- A2B limit switch mounted at tip of boom and jib to prevent over-winding of the wire rope.
- Anemometer mounted at tip of boom to check if the wind speed is out of the allowable operating range of the crane.
- 力矩限制器: 采用分析力学方法, 建立了基于吊重力学模型的力矩限制器计算系统, 通过在线空载标定, 额定吊重精度达到 $\pm 5\%$, 全方位保护吊载作业; 超载作业时, 系统自动报警提示, 为操纵作业提供安全保障。
- 液压系统配置液平衡阀、溢流阀、双向液压锁等元件, 实现液压系统稳定可靠。
- 卷扬配置二圈保护器, 防止钢丝绳过放。
- 主副臂臂端配置高度限位器, 防止钢丝绳过卷。
- 臂端装有风速仪, 检测高空风速是否超过可作业允许范围。

Operating Range - Telescopic Boom (T)

起升高度曲线 - 主臂





Load Chart - Telescopic Boom (T)

性能表 - 主臂

Unit: t

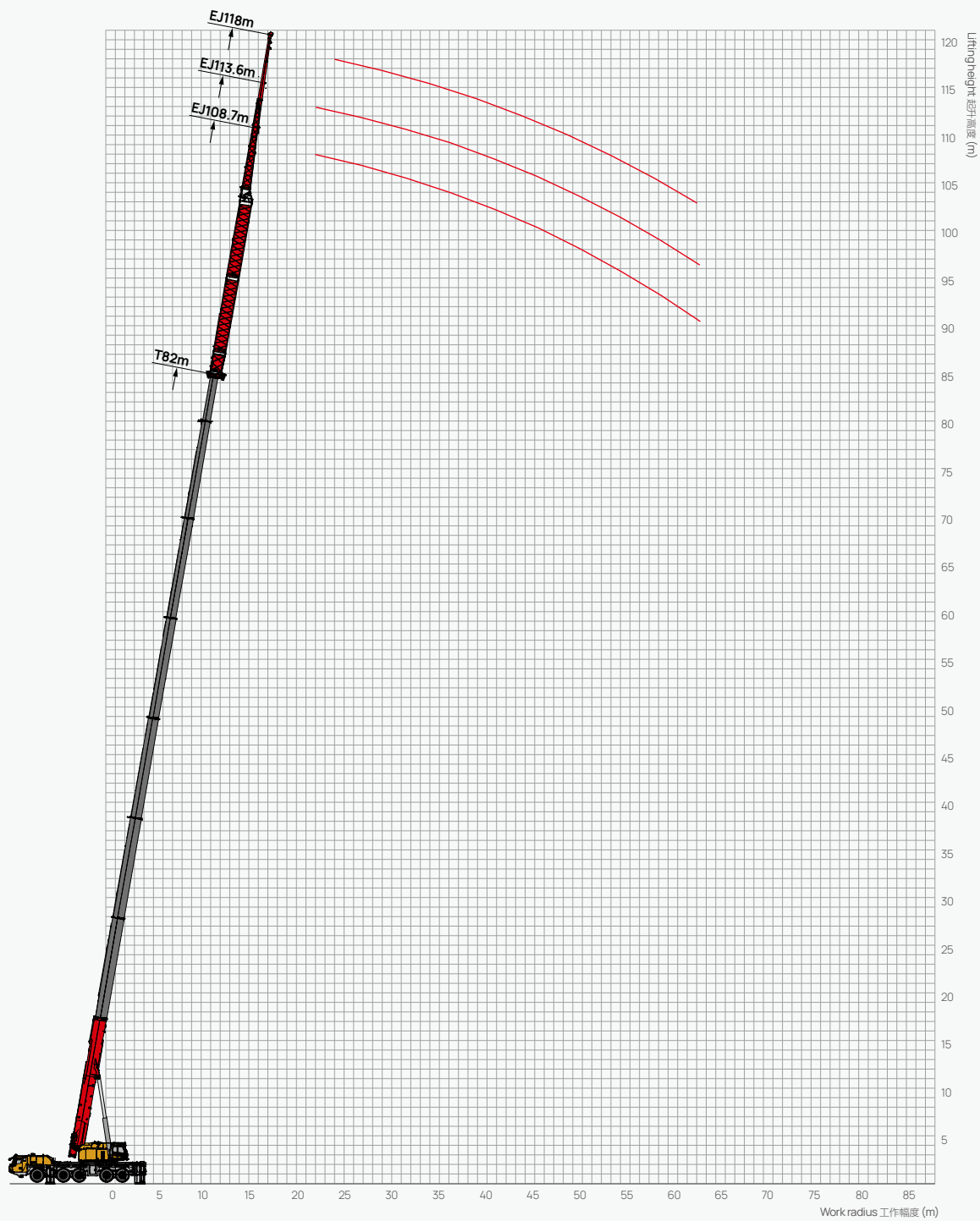


 m	14.9	19.7	24.6	29.4	34.3	39.2	44.0	48.5	53.4	58.2	63.1	68.0	72.8	77.5	82.2	86.4	88.0	 m
3.0	250*	145.0																3.0
3.5	145.0	145.0	125.5															3.5
4.0	140.0	140.0	124.5															4.0
4.5	135.0	136.0	122.6	110.0														4.5
5.0	125.0	127.5	114.8	107.0														5.0
6.0	115.0	116.4	100.9	105.4	88.0													6.0
7.0	103.0	103.0	94.6	95.7	84.0	75.0												7.0
8.0	90.5	90.5	83.6	86.9	79.0	75.0	65.0											8.0
9.0	80.5	80.5	75.9	78.8	75.0	70.0	65.0	51.0										9.0
10.0	73.0	73.0	70.4	72.6	72.3	66.0	61.0	50.0	43.9									10.0
12.0		60.0	58.7	60.0	62.4	60.0	58.0	47.0	40.0	36.8								12.0
14.0		51.3	50.8	54.0	54.9	54.4	50.6	42.5	36.0	33.4	30.1							14.0
16.0			43.5	45.2	44.3	45.4	42.7	40.0	33.0	29.9	29.0	22.7						16.0
18.0			38.1	37.6	38.6	37.3	38.0	36.0	29.0	27.4	26.0	22.7	17.5					18.0
20.0				31.7	32.7	31.8	32.8	32.1	27.4	24.4	23.5	20.9	17.3	14.1				20.0
22.0				27.2	28.1	27.3	28.2	29.2	25.5	23.0	21.0	19.0	16.9	14.1	11.6			22.0
24.0					24.5	24.3	24.5	25.5	23.0	20.7	19.2	17.3	15.9	13.9	11.6	8.5	8.2	24.0
26.0					21.4	22.4	22.7	22.4	21.4	18.2	18.1	16.0	14.7	13.4	11.4	8.5	8.2	26.0
28.0					17.2	19.8	20.7	19.9	19.2	17.0	16.3	14.8	13.6	12.7	11.4	8.5	8.2	28.0
30.0						17.7	18.5	17.7	17.0	15.5	15.1	13.6	12.4	11.7	11.2	8.5	7.8	30.0
32.0						14.0	16.7	15.9	15.2	13.8	13.9	12.4	11.5	10.8	11.0	8.2	7.4	32.0
34.0							15.1	14.2	13.5	12.7	12.7	11.5	10.6	10.0	9.8	7.9	7.2	34.0
36.0							13.7	12.8	12.0	11.7	11.7	10.8	10.0	9.4	9.2	7.6	7.0	36.0
38.0								11.4	10.7	10.4	10.4	10.1	9.1	8.9	8.6	7.2	6.9	38.0
40.0								10.2	9.7	9.2	9.2	9.4	8.5	8.3	8.1	6.8	6.9	40.0
42.0									8.8	8.1	8.2	8.2	8.1	7.7	7.5	6.4	6.7	42.0
44.0									7.8	7.5	7.2	7.4	7.6	7.2	7.1	6.1	6.4	44.0
46.0										6.8	6.7	6.6	6.7	6.8	6.8	5.8	6.3	46.0
48.0										6.6	5.9	6.0	6.1	6.3	6.2	5.5	5.9	48.0
50.0											5.4	5.5	5.4	5.9	6.0	5.2	5.5	50.0
52.0											4.7	5.1	4.8	5.2	5.6	4.4	5.3	52.0
54.0												4.7	4.2	4.6	5.1	4.2	4.9	54.0
56.0												4.5	3.9	4.0	4.5	4.0	4.5	56.0
58.0													3.5	3.6	4.0	3.8	4.0	58.0
60.0													2.6	3.3	3.5	3.5	3.6	60.0
62.0														3.0	3.1	3.2	3.1	62.0
64.0														2.8	2.6	2.8	2.7	64.0
66.0															2.2	2.4	2.3	66.0
68.0															1.9		1.9	68.0
70.0																	1.6	70.0

Remark: * Requires additional equipment.
备注: * 代表需使用附加装置。

Operating Range-Fixed Jib

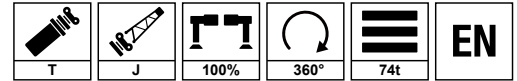
起升高度曲线 - 副臂



Load Chart-Fixed Jib

性能表 - 副臂

Unit: t

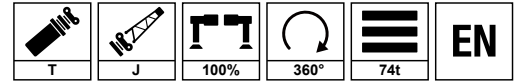








	12.7m+72.7m			12.7m+77.6m			12.7m+82.1m			
	0°	15°	30°	0°	15°	30°	0°	15°	30°	
18	7			6.4			5.2			18
20	7.0	6.0		6.4			5.2			20
22	6.7	6.0	4.2	6.4	5.5		5.2	4.5		22
24	6.7	6.0	4.2	6.3	5.5	4.0	5.2	4.5		24
26	6.5	5.8	4.1	6.3	5.5	4.0	5.2	4.5	3.6	26
28	6.3	5.8	4.1	6.3	5.5	3.9	5.2	4.5	3.5	28
30	6.2	5.6	3.9	6.1	5.3	3.7	5.1	4.5	3.5	30
32	6.0	5.6	3.9	6.0	5.1	3.6	5.1	4.3	3.3	32
34	5.8	5.4	3.7	5.8	4.9	3.5	5.1	4.3	3.3	34
36	5.6	5.2	3.6	5.5	4.7	3.4	5	4.1	3.3	36
38	5.4	5.0	3.5	5.2	4.6	3.4	5	4.1	3.3	38
40	5.1	4.8	3.5	4.9	4.5	3.4	4.8	4	3.3	40
42	4.8	4.6	3.4	4.7	4.2	3.3	4.6	3.8	3.3	42
44	4.5	4.3	3.4	4.5	4.0	3.3	4.4	3.6	3.2	44
46	4.2	4.0	3.3	4.2	3.7	3.3	4.2	3.4	3.2	46
48	3.9	3.8	3.3	3.9	3.5	3.2	3.9	3.2	3	48
50	3.6	3.6	3.2	3.6	3.3	3.2	3.6	3.1	2.9	50
52	3.3	3.4	3.1	3.3	3.1	3.2	3.3	3	2.9	52
54	3.0	3.1	3.1	3.0	2.9	3.1	3	2.9	2.8	54
56	2.7	2.8	2.9	2.7	2.7	2.9	2.8	2.8	2.7	56
58	2.4	2.5	2.6	2.4	2.5	2.7	2.6	2.7	2.6	58
60	2.1	2.2	2.3	2.2	2.3	2.5	2.4	2.6	2.6	60
62	1.8	1.9	1.9	2.0	2.1	2.3	2.2	2.4	2.4	62
64	1.5	1.6	1.7	1.7	1.9	2.1	2	2.2	2.3	64
66	1.3	1.5	1.5	1.5	1.7	1.8	1.7	2	2	66
68	1.1	1.3	0.0	1.2	1.5	1.6	1.4	1.8	1.7	68
70	1.0	1.1	0.0	1.0	1.2	1.4	1.2			70
72										72
74										74
76										76
78										78
80										80
	2222211			2222221			2222222			
	1	1	1	1	1	1	1	1	1	

Load Chart-Fixed Jib

性能表 - 副臂

Unit: t

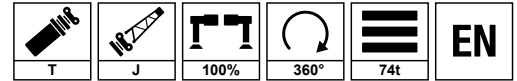








	20m+72.7m			20m+77.6m			20m+82.1m			
	0°	15°	30°	0°	15°	30°	0°	15°	30°	
18										18
20	4.4									20
22	4.4			4.0			3.5			22
24	4.4	3.3		4.0			3.5			24
26	4.4	3.3	2.2	4.0	3.2		3.5	2.8		26
28	4.4	3.2	2.2	3.9	3.1	2.0	3.5	2.8		28
30	4.3	3.1	2.2	3.9	2.9	2.0	3.5	2.8		30
32	4.3	3.0	2.1	3.9	2.9	1.9	3.5	2.8		32
34	4.1	2.9	2.0	3.8	2.8	1.9	3.5	2.7		34
36	4.0	2.8	1.9	3.8	2.7	1.8	3.4	2.7		36
38	3.9	2.7	1.8	3.8	2.6	1.8	3.4	2.6		38
40	3.7	2.6	1.7	3.7	2.5	1.7	3.4	2.5		40
42	3.5	2.5	1.6	3.7	2.5	1.7	3.3	2.4		42
44	3.3	2.3	1.5	3.6	2.3	1.6	3.2	2.3		44
46	3.2	2.2	1.5	3.5	2.2	1.6	3.1	2.2		46
48	3.1	2.1	1.5	3.4	2.2	1.6	2.9	2		48
50	2.9	2.1	1.5	3.3	2.2	1.5	2.7	2		50
52	2.8	2.1	1.4	3.2	2.1	1.5	2.6	2		52
54	2.7	2.0	1.4	3.1	2.0	1.5	2.5	2		54
56	2.6	1.9	1.4	2.9	1.9	1.4	2.4	1.9		56
58	2.5	1.9	1.4	2.5	1.9	1.4	2.3	1.9		58
60	2.3	1.9	1.4	2.5	1.9	1.4	2.2	1.9		2.2
62	2.1	1.8	1.4	2.2	1.8	1.4	2.1	1.8		62
64	1.9	1.8	1.4	2.0	1.8	1.4	1.9	1.8		64
66	1.7	1.8	1.4	1.7	1.8	1.4	1.7	1.8		66
68	1.5	1.7	1.4	1.6	1.7	1.3	1.5	1.7		68
70	1.3	1.5	1.4	1.4	1.5	1.3	1.4	1.5		70
72		1.2	1.3	1.2	1.3	1.3		1.3		72
74					1.2	1.2				74
76										76
78										78
80										80
	2222211			2222221			2222222			
	1	1	1	1	1	1	1	1	1	

Load Chart-Fixed Jib

性能表 - 副臂

Unit: t

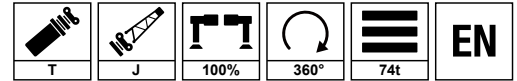








	28m+72.7m			28m+77.6m			28m+82.1m			
	0°	15°	30°	0°	15°	30°	0°	15°	30°	
18										18
20										20
22	3.5			3.1						22
24	3.5			3.1			2.6			24
26	3.5			3.1			2.6			26
28	3.5	2.7		3.1	2.7		2.6			28
30	3.5	2.7		3.1	2.7		2.5	2.1		30
32	3.5	2.6	1.7	3.1	2.7		2.5	2.1		32
34	3.4	2.6	1.7	3.1	2.7		2.5	2.1		34
36	3.4	2.5	1.7	3.1	2.6		2.5	2		36
38	3.3	2.4	1.7	3.0	2.6		2.4	2		38
40	3.2	2.3	1.7	3.0	2.5		2.4	2		40
42	3.1	2.3	1.6	3.0	2.5		2.4	1.9		42
44	2.9	2.1	1.6	2.9	2.4		2.4	1.8		44
46	2.8	2.0	1.6	2.8	2.4		2.3	1.8		46
48	2.7	1.9	1.5	2.7	2.3		2.3	1.7		48
50	2.6	1.8	1.5	2.6	2.2		2.3	1.7		50
52	2.5	1.7	1.5	2.5	2.1		2.2	1.7		52
54	2.4	1.7	1.4	2.4	2.0		2.2	1.7		54
56	2.3	1.6	1.4	2.3	1.9		2.2	1.7		56
58	2.2	1.6	1.4	2.2	1.8		2.2	1.6		58
60	2.1	1.5	1.3	2.1	1.7		2.2	1.6		60
62	2.0	1.5	1.3	2.0	1.6		1.9	1.5		62
64	1.9	1.4	1.2	1.8	1.5		1.8	1.5		64
66	1.7	1.4	1.2	1.7	1.5		1.6	1.5		66
68	1.6	1.3	1.2	1.6	1.5		1.4	1.5		68
70	1.3	1.3	1.2	1.5	1.4			1.4		70
72	1.2	1.3	1.2	1.3	1.3					72
74										74
76										76
78										78
80										80
	2222211			2222221			2222222			
	1	1	1	1	1	1	1	1	1	

Load Chart-Fixed Jib

性能表 - 副臂

Unit: t



	36m+72.7m			36m+77.6m			36m+82.1m			
	0°	15°	30°	0°	15°	30°	0°	15°	30°	
18										18
20										20
22	2.7			2.4						22
24	2.7			2.4			2			24
26	2.7			2.4			2			26
28	2.7	2.4		2.4	2.2		2			28
30	2.7	2.4		2.4	2.2		2			30
32	2.7	2.4		2.4	2.2		2			32
34	2.7	2.3		2.4	2.2		1.9			34
36	2.7	2.3		2.3	2.2		1.9			36
38	2.6	2.3		2.3	2.1		1.9			38
40	2.6	2.2		2.3	2.1		1.9			40
42	2.6	2.1		2.3	2.0		1.9			42
44	2.6	2.0		2.3	2.0		1.9			44
46	2.6	2.0		2.3	2.0		1.8			46
48	2.5	1.9		2.3	1.9		1.8			48
50	2.5	1.9		2.3	1.9		1.8			50
52	2.4	1.8		2.3	1.8		1.8			52
54	2.3	1.8		2.3	1.8		1.8			54
56	2.1	1.8		2.0	1.8		1.8			56
58	2.1	1.7		1.9	1.7		1.7			58
60	2.0	1.7		1.7	1.7		1.7			2.2
62	1.8	1.6		1.5	1.6		1.7			62
64	1.7	1.6		1.3	1.4					64
66										66
68										68
70										70
72										72
74										74
76										76
78										78
80										80
	2222211			2222221			2222222			
	1	1	1	1	1	1	1	1	1	



SANY GROUP CRANE BU

SANY Mobile Crane Industrial Park, No.168 Jinzhou Avenue, Jinzhou Development Zone, Changsha City,
Hunan Province, P.R. China Zip 410600
Consulting sanycrane@sanygroup.com (Crane BU) / crd@sany.com.cn (IHQ)
After-sales Service 0086-400 6098 318

Reminder:
Any change in the technical parameters and configuration due to product modification or upgrade may occur without prior notice.
The machine in the picture may include additional equipment. This brochure is for reference only, and goods in kind shall prevail.
Copyright at SANY. No part of this brochure may be copied or used for any purpose without written approval from SANY.

© Edited in March 2024

三一集团起重事业部

中国湖南长沙金洲开发区金洲大道 168 号 三一汽车起重机产业园 邮编: 410600
咨询: sanycrane@sanygroup.com (起重事业部) / crd@sany.com.cn (国际总部)
海外售后服务: 0086-400 6098 318

温馨提示:
由于技术不断更新, 技术参数及配置如有更改, 恕不另行通知。图中机器可能包括附加设备, 本画册仅供参考, 以实物为准。
版权为三一所有, 未经三一书面许可, 本画册任何内容不得被复制用于任何目的。

© 2024 年 3 月版

